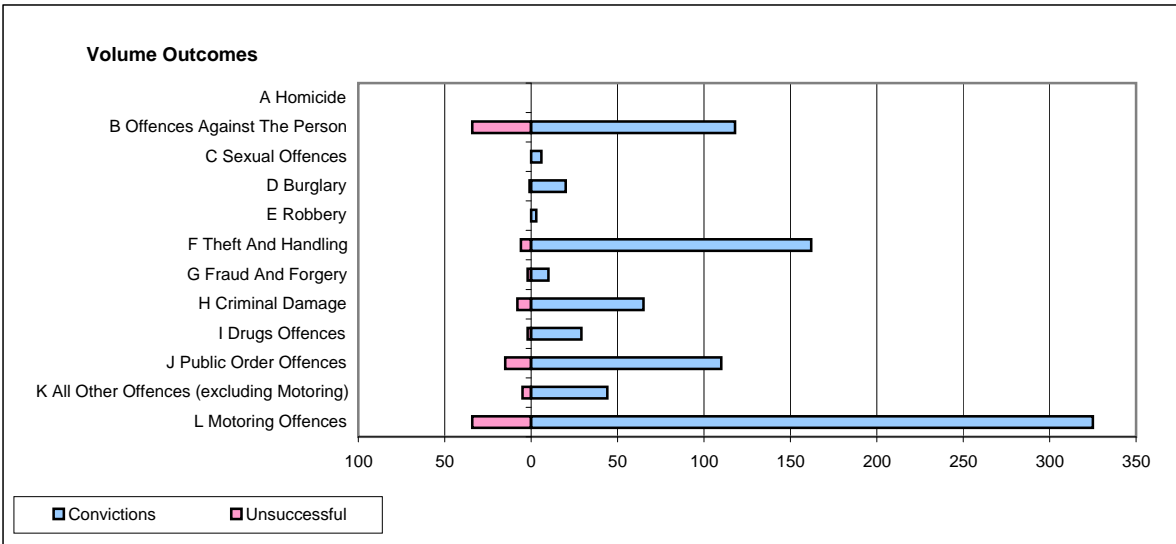
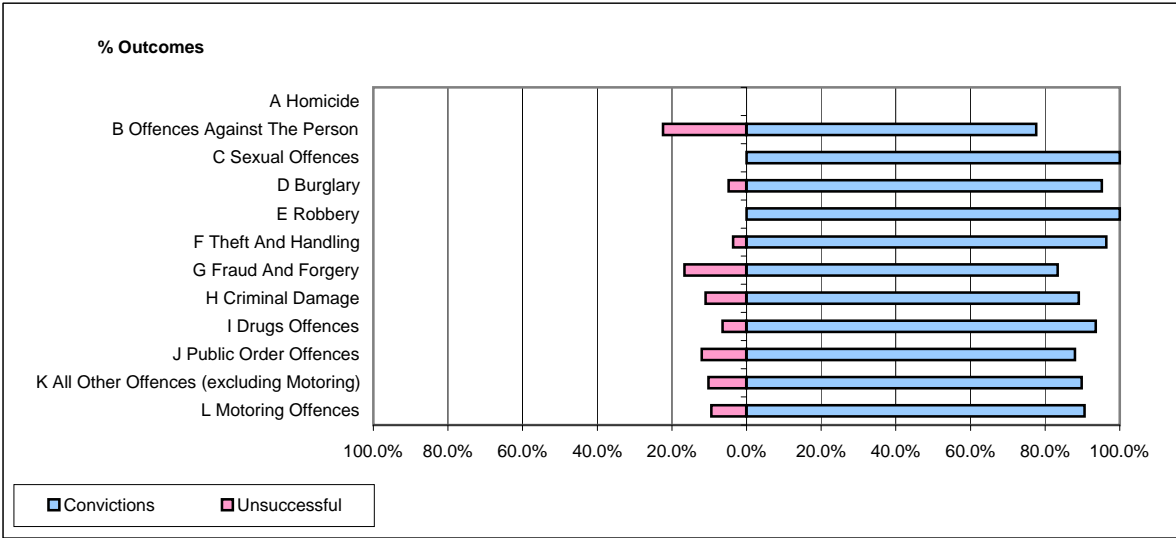


CPS OUTCOMES BY PRINCIPAL OFFENCE CATEGORY

February 2009

P29-NorthWales



	Convictions		Unsuccessful	
	Number of Defendants	%	Number of Defendants	%
A Homicide	0	0	0	0
B Offences Against The Person	118	77.6%	34	22.4%
C Sexual Offences	6	100.0%	0	0.0%
D Burglary	20	95.2%	1	4.8%
E Robbery	3	100.0%	0	0.0%
F Theft And Handling	162	96.4%	6	3.6%
G Fraud And Forgery	10	83.3%	2	16.7%
H Criminal Damage	65	89.0%	8	11.0%
I Drugs Offences	29	93.5%	2	6.5%
J Public Order Offences	110	88.0%	15	12.0%
K All Other Offences (excluding Motoring)	44	89.8%	5	10.2%
L Motoring Offences	325	90.5%	34	9.5%
Admin Finalisations	0	0.0%	9	100.0%
TOTAL	892	88.5%	116	11.5%