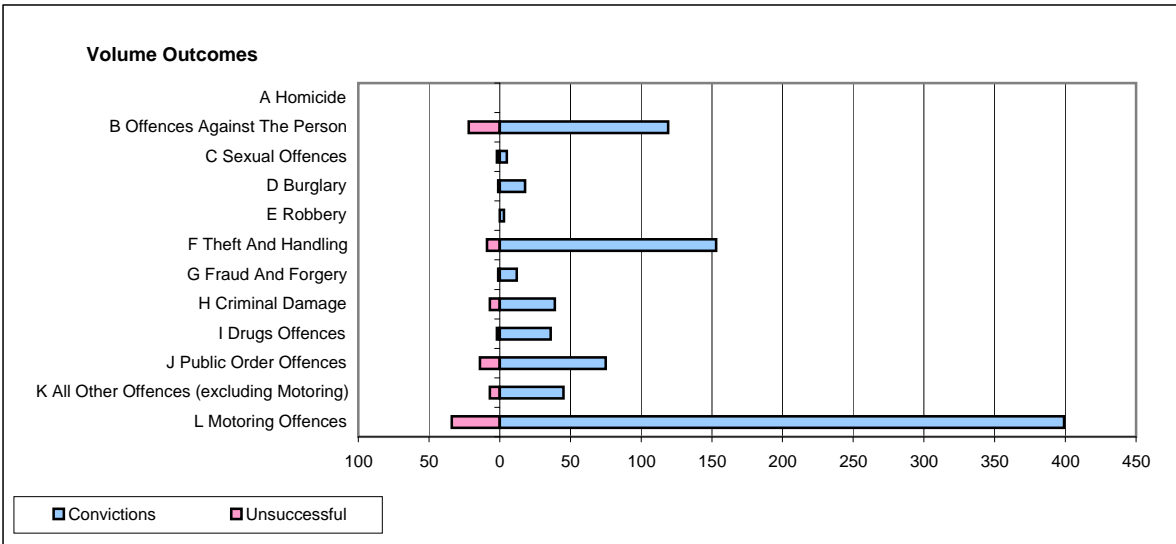
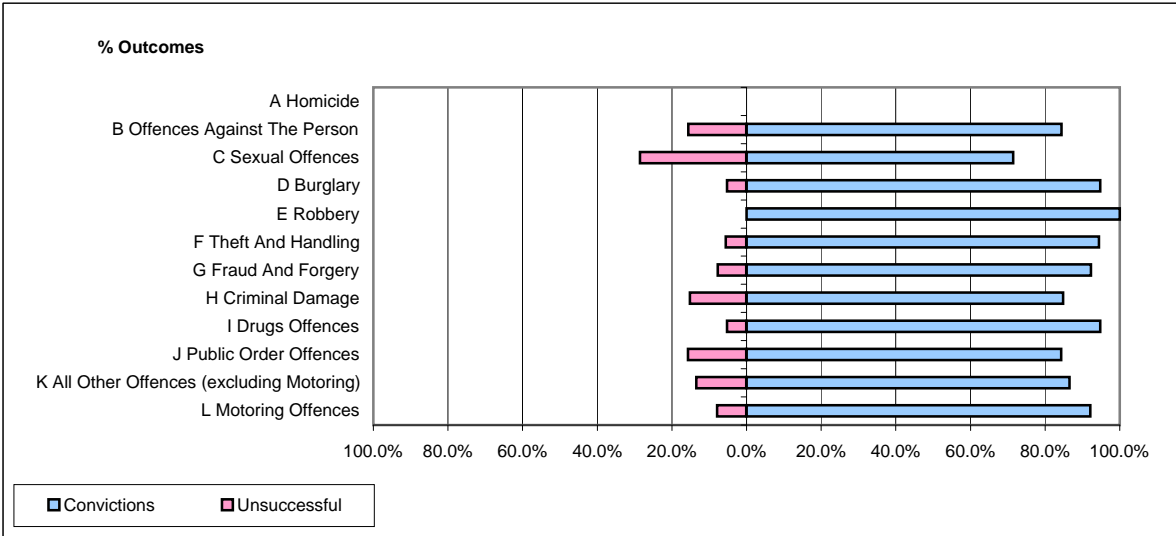


CPS OUTCOMES BY PRINCIPAL OFFENCE CATEGORY

February 2009

P26-Norfolk



	Convictions		Unsuccessful	
	Number of Defendants	%	Number of Defendants	%
A Homicide	0	0	0	0
B Offences Against The Person	119	84.4%	22	15.6%
C Sexual Offences	5	71.4%	2	28.6%
D Burglary	18	94.7%	1	5.3%
E Robbery	3	100.0%	0	0.0%
F Theft And Handling	153	94.4%	9	5.6%
G Fraud And Forgery	12	92.3%	1	7.7%
H Criminal Damage	39	84.8%	7	15.2%
I Drugs Offences	36	94.7%	2	5.3%
J Public Order Offences	75	84.3%	14	15.7%
K All Other Offences (excluding Motoring)	45	86.5%	7	13.5%
L Motoring Offences	399	92.1%	34	7.9%
Admin Finalisations	0	0.0%	15	100.0%
TOTAL	904	88.8%	114	11.2%