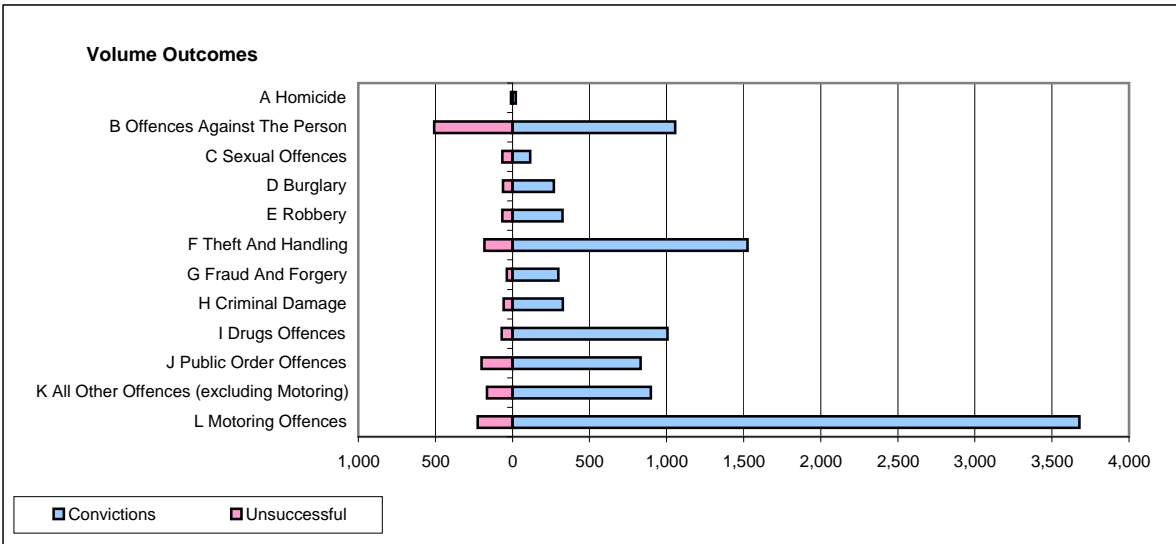
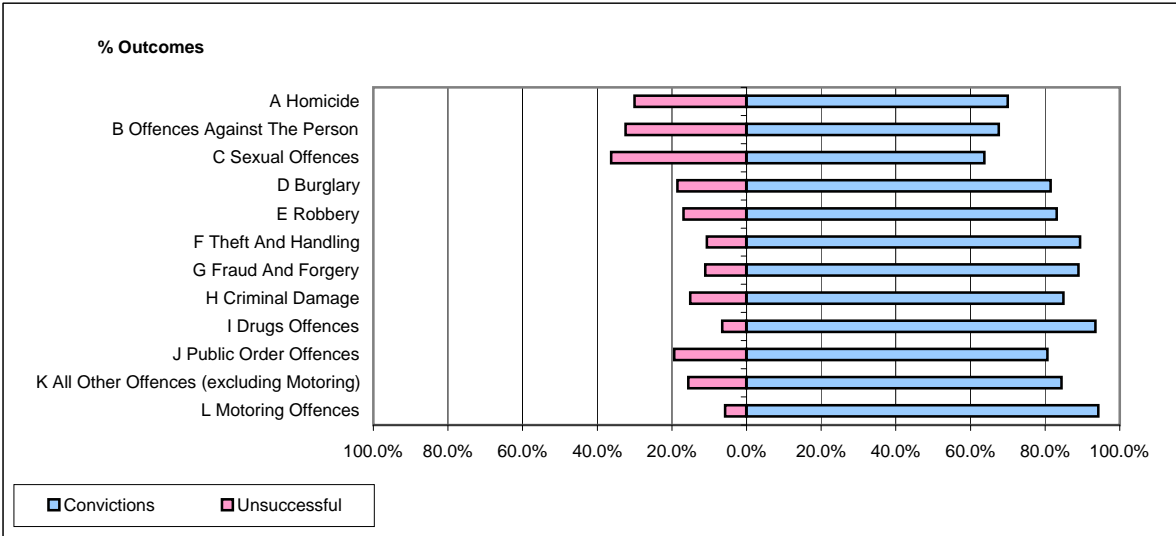


CPS OUTCOMES BY PRINCIPAL OFFENCE CATEGORY

February 2009

P25-Metropolitan&City



| | Convictions | | Unsuccessful | |
|--|----------------------|--------------|----------------------|---------------|
| | Number of Defendants | % | Number of Defendants | % |
| A Homicide | 21 | 70.0% | 9 | 30.0% |
| B Offences Against The Person | 1,055 | 67.5% | 507 | 32.5% |
| C Sexual Offences | 114 | 63.7% | 65 | 36.3% |
| D Burglary | 268 | 81.5% | 61 | 18.5% |
| E Robbery | 325 | 83.1% | 66 | 16.9% |
| F Theft And Handling | 1,524 | 89.3% | 182 | 10.7% |
| G Fraud And Forgery | 297 | 88.9% | 37 | 11.1% |
| H Criminal Damage | 326 | 84.9% | 58 | 15.1% |
| I Drugs Offences | 1,006 | 93.5% | 70 | 6.5% |
| J Public Order Offences | 832 | 80.6% | 200 | 19.4% |
| K All Other Offences (excluding Motoring) | 897 | 84.4% | 166 | 15.6% |
| L Motoring Offences | 3,678 | 94.2% | 226 | 5.8% |
| Admin Finalisations | 0 | 0.0% | 391 | 100.0% |
| TOTAL | 10,343 | 83.5% | 2,038 | 16.5% |