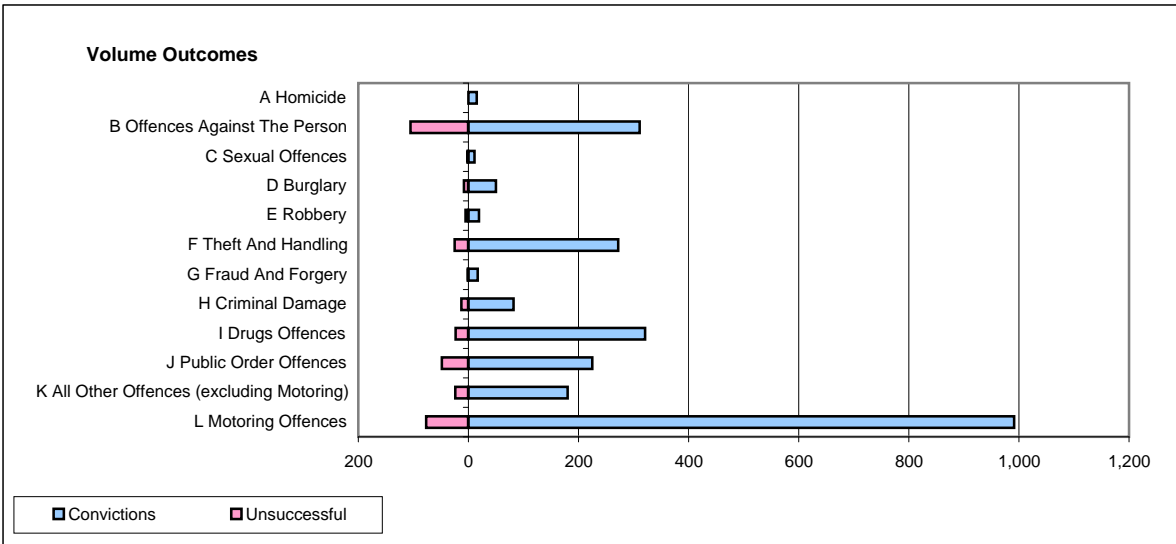
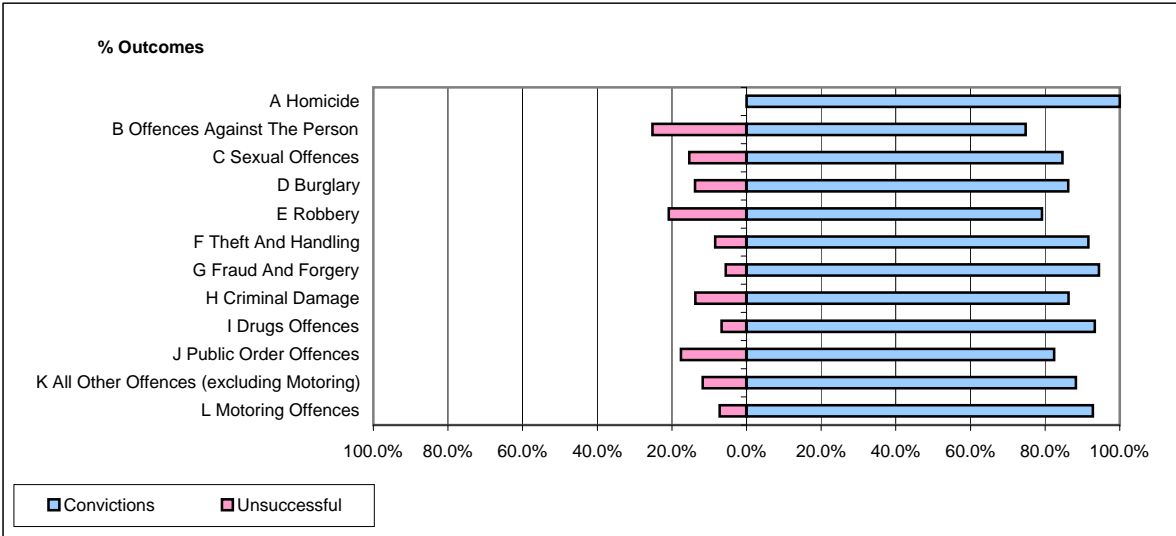


**CPS OUTCOMES BY PRINCIPAL OFFENCE CATEGORY**

**February 2009**

**P24-Merseyside**



	Convictions		Unsuccessful	
	Number of Defendants	%	Number of Defendants	%
<b>A Homicide</b>	15	100.0%	0	0.0%
<b>B Offences Against The Person</b>	311	74.8%	105	25.2%
<b>C Sexual Offences</b>	11	84.6%	2	15.4%
<b>D Burglary</b>	50	86.2%	8	13.8%
<b>E Robbery</b>	19	79.2%	5	20.8%
<b>F Theft And Handling</b>	272	91.6%	25	8.4%
<b>G Fraud And Forgery</b>	17	94.4%	1	5.6%
<b>H Criminal Damage</b>	82	86.3%	13	13.7%
<b>I Drugs Offences</b>	321	93.3%	23	6.7%
<b>J Public Order Offences</b>	225	82.4%	48	17.6%
<b>K All Other Offences (excluding Motoring)</b>	180	88.2%	24	11.8%
<b>L Motoring Offences</b>	991	92.8%	77	7.2%
<b>Admin Finalisations</b>	0	0.0%	21	100.0%
<b>TOTAL</b>	<b>2,494</b>	<b>87.6%</b>	<b>352</b>	<b>12.4%</b>