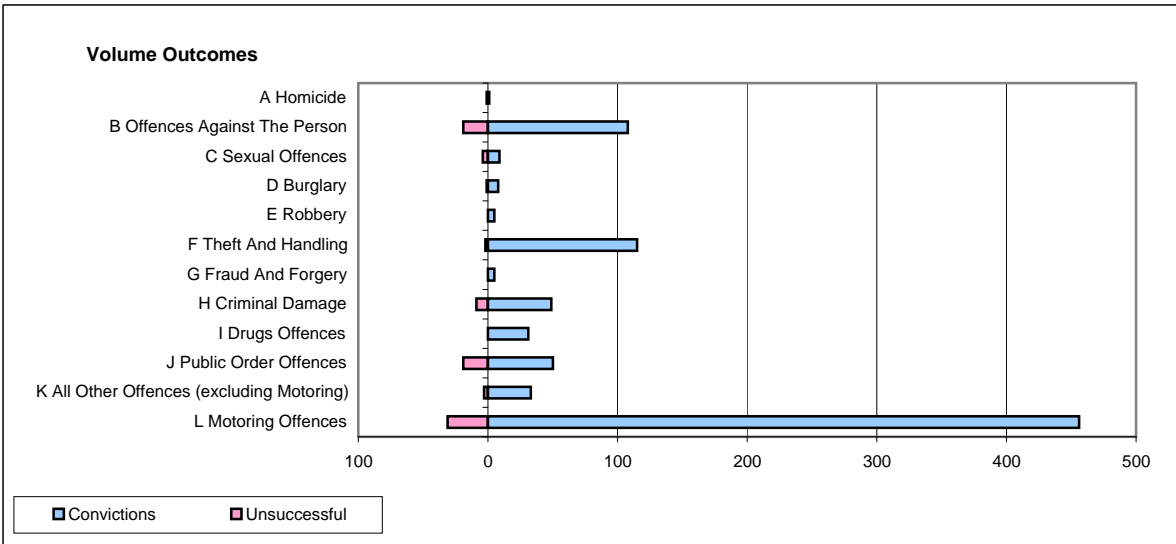
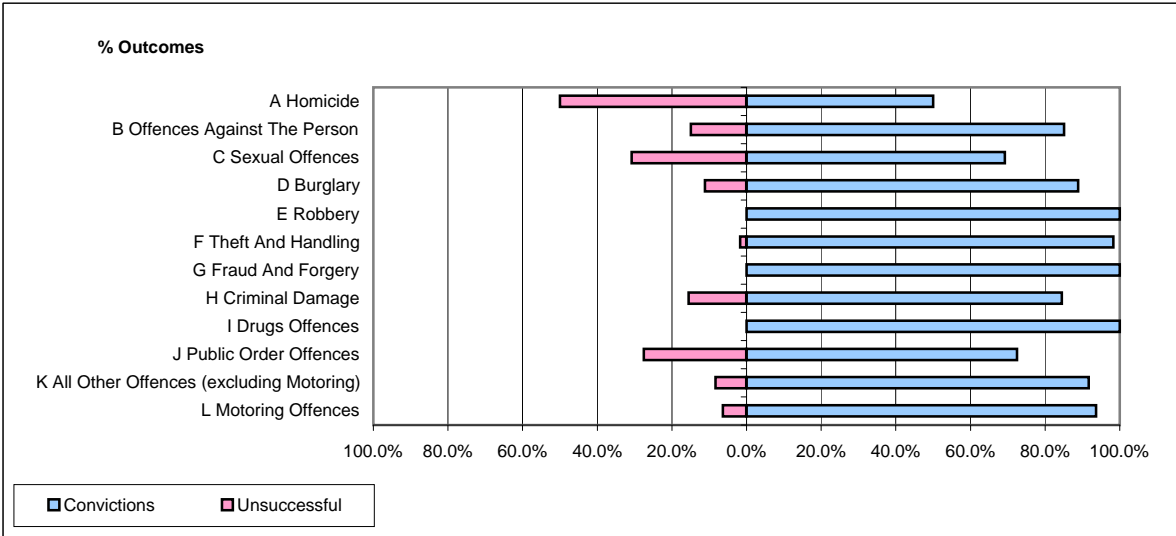


**CPS OUTCOMES BY PRINCIPAL OFFENCE CATEGORY**

**February 2009**

**P23-Lincolnshire**



	Convictions		Unsuccessful	
	Number of Defendants	%	Number of Defendants	%
<b>A Homicide</b>	<b>1</b>	<b>50.0%</b>	<b>1</b>	<b>50.0%</b>
<b>B Offences Against The Person</b>	<b>108</b>	<b>85.0%</b>	<b>19</b>	<b>15.0%</b>
<b>C Sexual Offences</b>	<b>9</b>	<b>69.2%</b>	<b>4</b>	<b>30.8%</b>
<b>D Burglary</b>	<b>8</b>	<b>88.9%</b>	<b>1</b>	<b>11.1%</b>
<b>E Robbery</b>	<b>5</b>	<b>100.0%</b>	<b>0</b>	<b>0.0%</b>
<b>F Theft And Handling</b>	<b>115</b>	<b>98.3%</b>	<b>2</b>	<b>1.7%</b>
<b>G Fraud And Forgery</b>	<b>5</b>	<b>100.0%</b>	<b>0</b>	<b>0.0%</b>
<b>H Criminal Damage</b>	<b>49</b>	<b>84.5%</b>	<b>9</b>	<b>15.5%</b>
<b>I Drugs Offences</b>	<b>31</b>	<b>100.0%</b>	<b>0</b>	<b>0.0%</b>
<b>J Public Order Offences</b>	<b>50</b>	<b>72.5%</b>	<b>19</b>	<b>27.5%</b>
<b>K All Other Offences (excluding Motoring)</b>	<b>33</b>	<b>91.7%</b>	<b>3</b>	<b>8.3%</b>
<b>L Motoring Offences</b>	<b>456</b>	<b>93.6%</b>	<b>31</b>	<b>6.4%</b>
<b>Admin Finalisations</b>	<b>0</b>	<b>0.0%</b>	<b>13</b>	<b>100.0%</b>
<b>TOTAL</b>	<b>870</b>	<b>89.5%</b>	<b>102</b>	<b>10.5%</b>