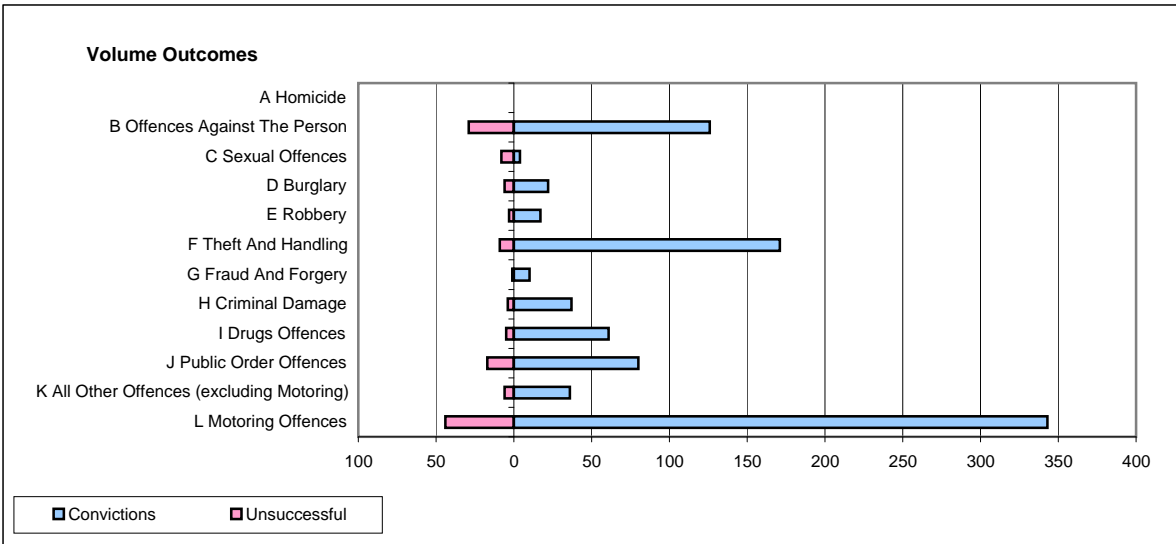
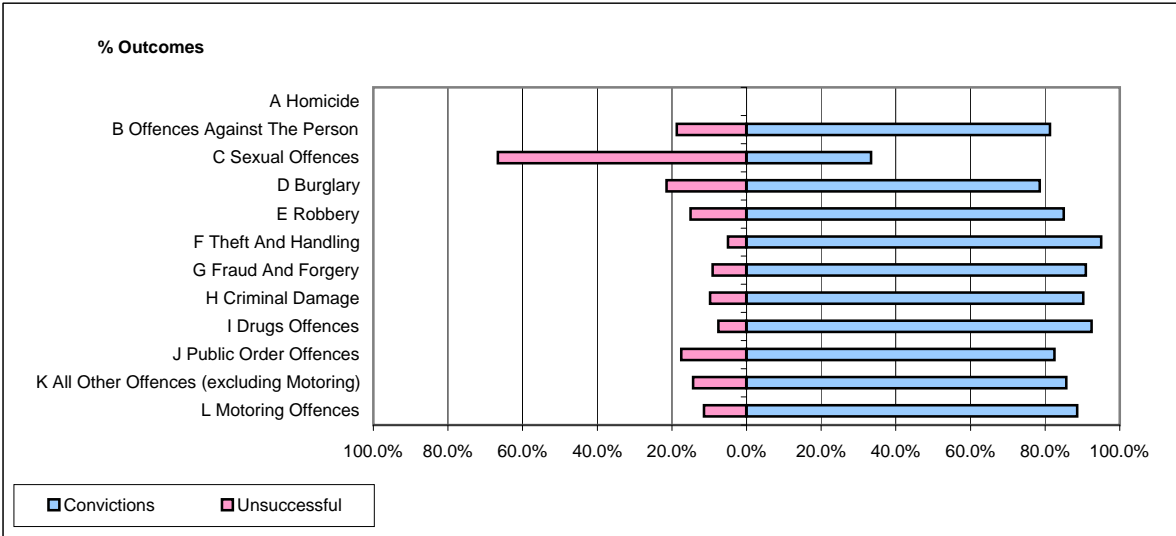


CPS OUTCOMES BY PRINCIPAL OFFENCE CATEGORY

February 2009

P22-Leicestershire



	Convictions		Unsuccessful	
	Number of Defendants	%	Number of Defendants	%
A Homicide	0	0	0	0
B Offences Against The Person	126	81.3%	29	18.7%
C Sexual Offences	4	33.3%	8	66.7%
D Burglary	22	78.6%	6	21.4%
E Robbery	17	85.0%	3	15.0%
F Theft And Handling	171	95.0%	9	5.0%
G Fraud And Forgery	10	90.9%	1	9.1%
H Criminal Damage	37	90.2%	4	9.8%
I Drugs Offences	61	92.4%	5	7.6%
J Public Order Offences	80	82.5%	17	17.5%
K All Other Offences (excluding Motoring)	36	85.7%	6	14.3%
L Motoring Offences	343	88.6%	44	11.4%
Admin Finalisations	0	0.0%	12	100.0%
TOTAL	907	86.3%	144	13.7%