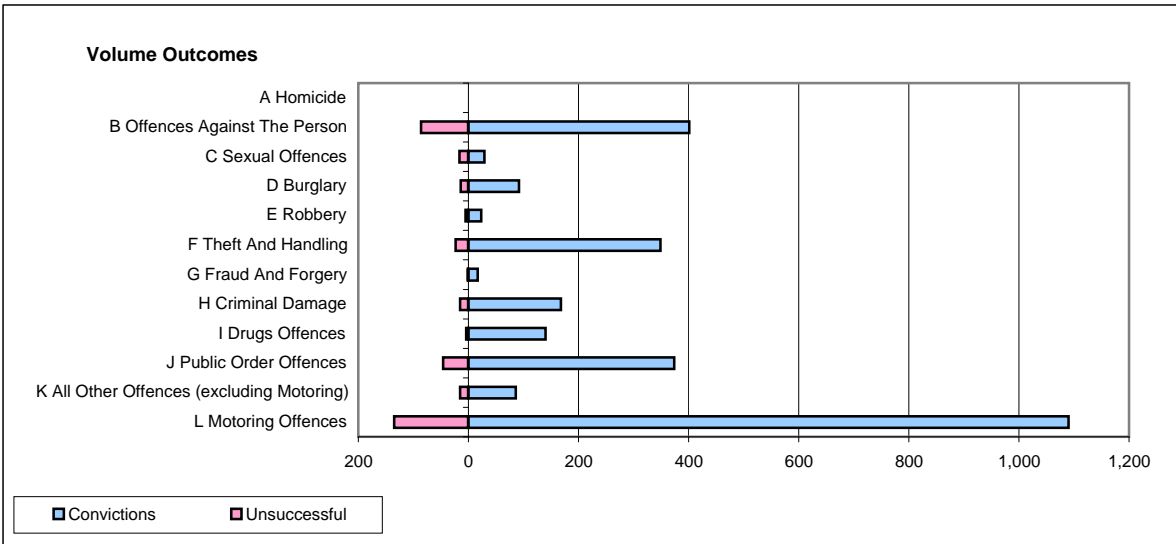
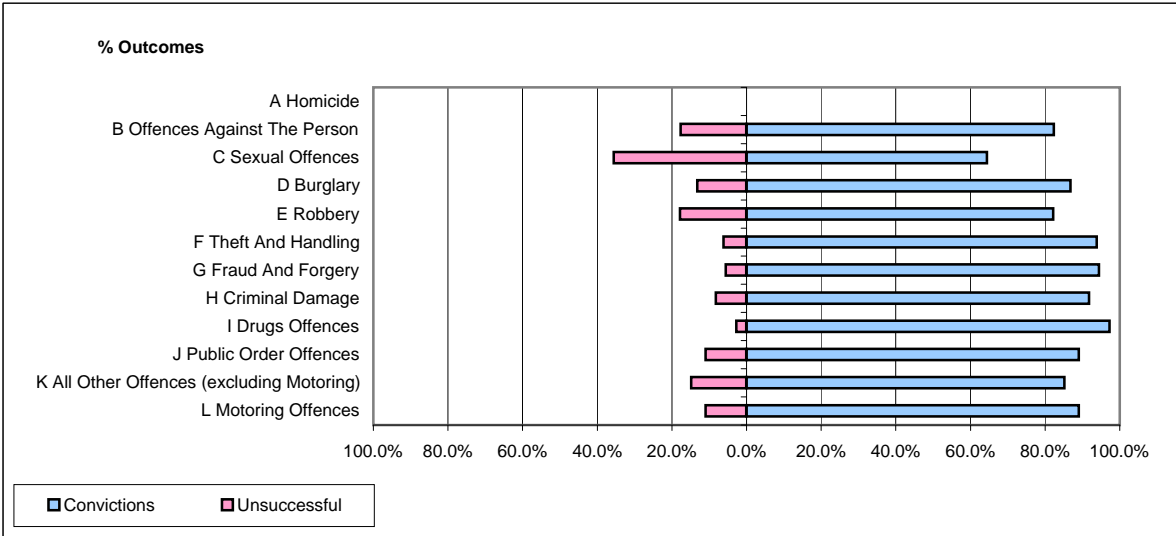


**CPS OUTCOMES BY PRINCIPAL OFFENCE CATEGORY**

**February 2009**

**P21-Lancashire**



	Convictions		Unsuccessful	
	Number of Defendants	%	Number of Defendants	%
<b>A Homicide</b>	<b>0</b>	<b>0</b>	<b>0</b>	<b>0</b>
<b>B Offences Against The Person</b>	<b>401</b>	<b>82.3%</b>	<b>86</b>	<b>17.7%</b>
<b>C Sexual Offences</b>	<b>29</b>	<b>64.4%</b>	<b>16</b>	<b>35.6%</b>
<b>D Burglary</b>	<b>92</b>	<b>86.8%</b>	<b>14</b>	<b>13.2%</b>
<b>E Robbery</b>	<b>23</b>	<b>82.1%</b>	<b>5</b>	<b>17.9%</b>
<b>F Theft And Handling</b>	<b>349</b>	<b>93.8%</b>	<b>23</b>	<b>6.2%</b>
<b>G Fraud And Forgery</b>	<b>17</b>	<b>94.4%</b>	<b>1</b>	<b>5.6%</b>
<b>H Criminal Damage</b>	<b>168</b>	<b>91.8%</b>	<b>15</b>	<b>8.2%</b>
<b>I Drugs Offences</b>	<b>140</b>	<b>97.2%</b>	<b>4</b>	<b>2.8%</b>
<b>J Public Order Offences</b>	<b>374</b>	<b>89.0%</b>	<b>46</b>	<b>11.0%</b>
<b>K All Other Offences (excluding Motoring)</b>	<b>86</b>	<b>85.1%</b>	<b>15</b>	<b>14.9%</b>
<b>L Motoring Offences</b>	<b>1,090</b>	<b>89.0%</b>	<b>135</b>	<b>11.0%</b>
<b>Admin Finalisations</b>	<b>0</b>	<b>0.0%</b>	<b>29</b>	<b>100.0%</b>
<b>TOTAL</b>	<b>2,769</b>	<b>87.7%</b>	<b>389</b>	<b>12.3%</b>