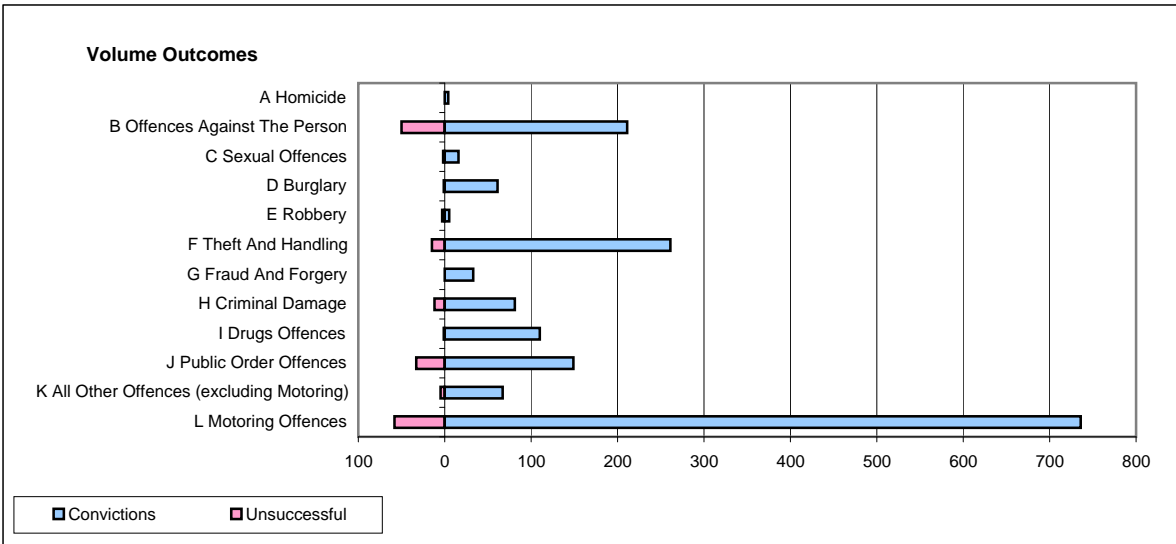
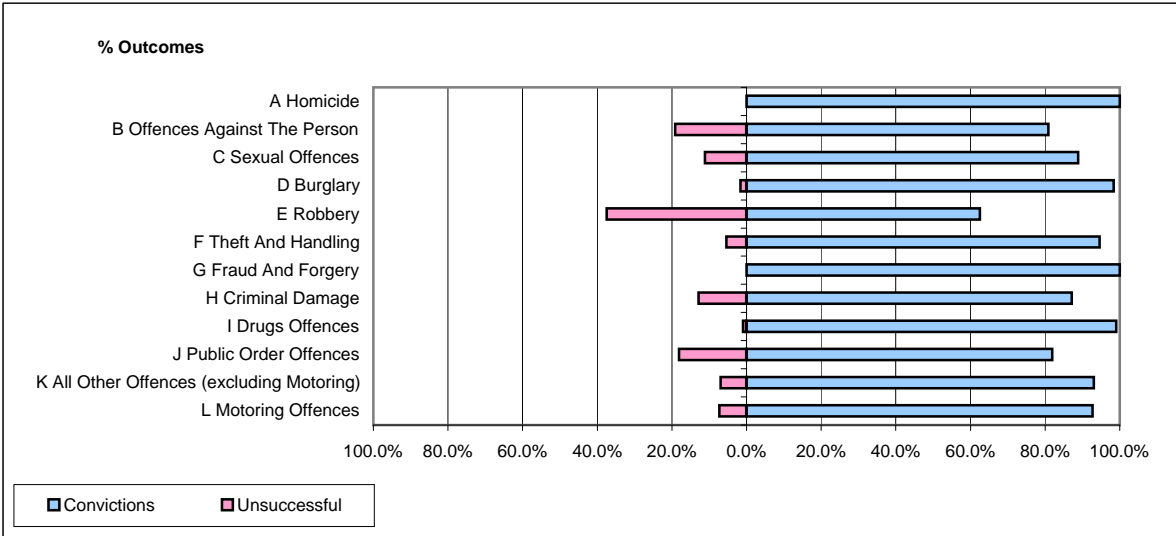


CPS OUTCOMES BY PRINCIPAL OFFENCE CATEGORY

February 2009

P20-Kent



	Convictions		Unsuccessful	
	Number of Defendants	%	Number of Defendants	%
A Homicide	4	100.0%	0	0.0%
B Offences Against The Person	211	80.8%	50	19.2%
C Sexual Offences	16	88.9%	2	11.1%
D Burglary	61	98.4%	1	1.6%
E Robbery	5	62.5%	3	37.5%
F Theft And Handling	261	94.6%	15	5.4%
G Fraud And Forgery	33	100.0%	0	0.0%
H Criminal Damage	81	87.1%	12	12.9%
I Drugs Offences	110	99.1%	1	0.9%
J Public Order Offences	149	81.9%	33	18.1%
K All Other Offences (excluding Motoring)	67	93.1%	5	6.9%
L Motoring Offences	736	92.7%	58	7.3%
Admin Finalisations	0	0.0%	18	100.0%
TOTAL	1,734	89.8%	198	10.2%