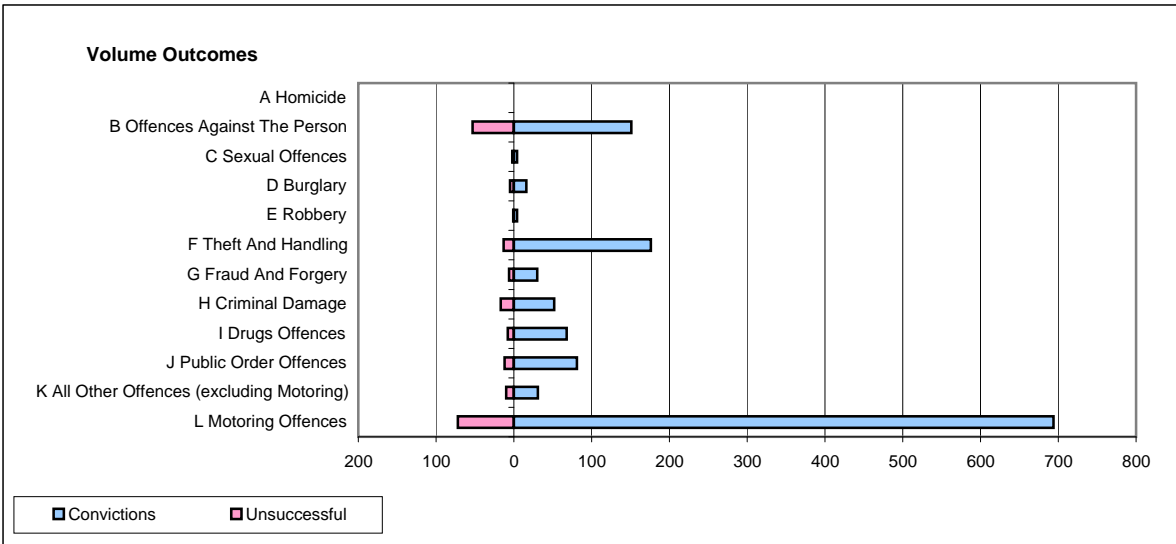
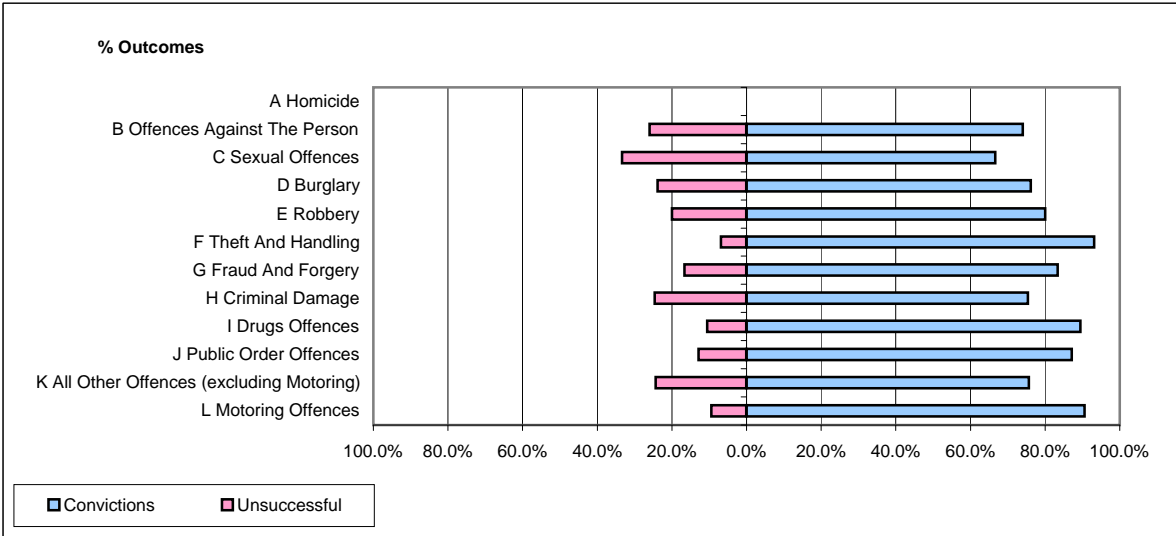


**CPS OUTCOMES BY PRINCIPAL OFFENCE CATEGORY**

**February 2009**

**P18-Hertfordshire**



	Convictions		Unsuccessful	
	Number of Defendants	%	Number of Defendants	%
<b>A Homicide</b>	<b>0</b>	<b>0</b>	<b>0</b>	<b>0</b>
<b>B Offences Against The Person</b>	<b>151</b>	<b>74.0%</b>	<b>53</b>	<b>26.0%</b>
<b>C Sexual Offences</b>	<b>4</b>	<b>66.7%</b>	<b>2</b>	<b>33.3%</b>
<b>D Burglary</b>	<b>16</b>	<b>76.2%</b>	<b>5</b>	<b>23.8%</b>
<b>E Robbery</b>	<b>4</b>	<b>80.0%</b>	<b>1</b>	<b>20.0%</b>
<b>F Theft And Handling</b>	<b>176</b>	<b>93.1%</b>	<b>13</b>	<b>6.9%</b>
<b>G Fraud And Forgery</b>	<b>30</b>	<b>83.3%</b>	<b>6</b>	<b>16.7%</b>
<b>H Criminal Damage</b>	<b>52</b>	<b>75.4%</b>	<b>17</b>	<b>24.6%</b>
<b>I Drugs Offences</b>	<b>68</b>	<b>89.5%</b>	<b>8</b>	<b>10.5%</b>
<b>J Public Order Offences</b>	<b>81</b>	<b>87.1%</b>	<b>12</b>	<b>12.9%</b>
<b>K All Other Offences (excluding Motoring)</b>	<b>31</b>	<b>75.6%</b>	<b>10</b>	<b>24.4%</b>
<b>L Motoring Offences</b>	<b>694</b>	<b>90.6%</b>	<b>72</b>	<b>9.4%</b>
<b>Admin Finalisations</b>	<b>0</b>	<b>0.0%</b>	<b>31</b>	<b>100.0%</b>
<b>TOTAL</b>	<b>1,307</b>	<b>85.0%</b>	<b>230</b>	<b>15.0%</b>