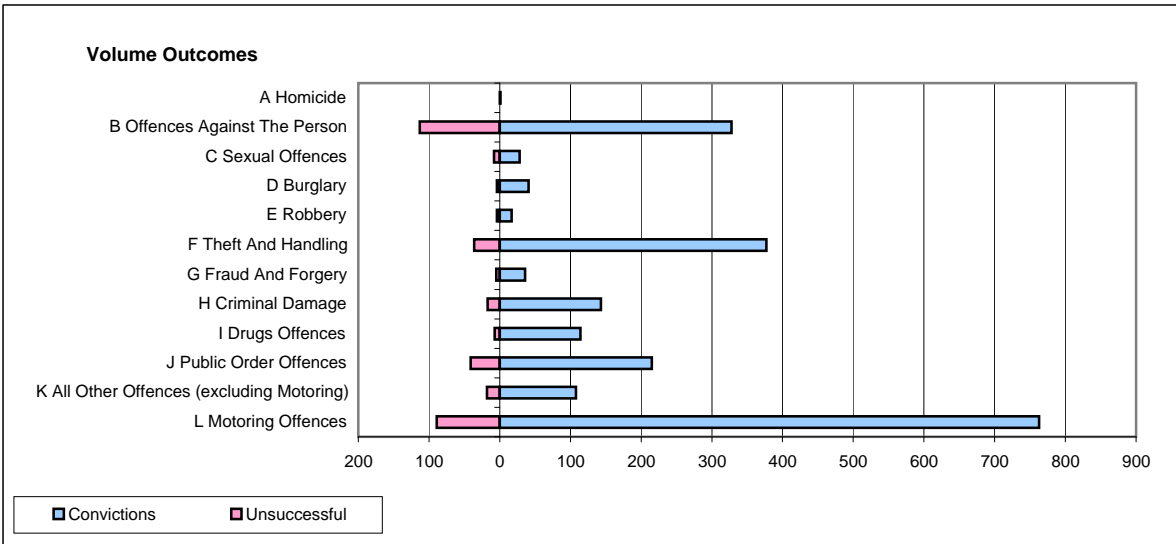
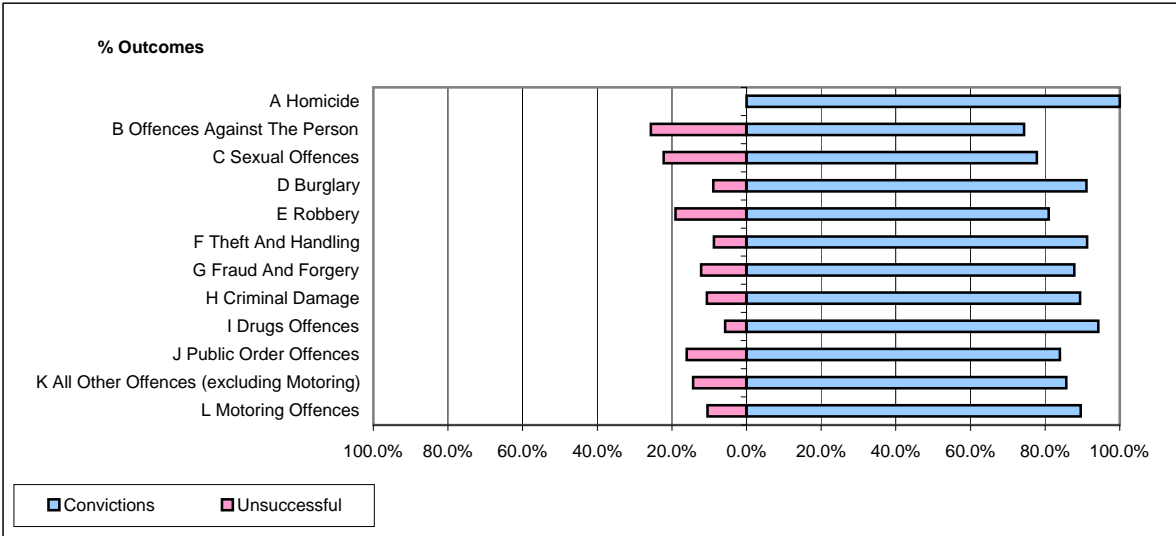


CPS OUTCOMES BY PRINCIPAL OFFENCE CATEGORY

February 2009

P17-Hampshire



	Convictions		Unsuccessful	
	Number of Defendants	%	Number of Defendants	%
A Homicide	1	100.0%	0	0.0%
B Offences Against The Person	328	74.4%	113	25.6%
C Sexual Offences	28	77.8%	8	22.2%
D Burglary	41	91.1%	4	8.9%
E Robbery	17	81.0%	4	19.0%
F Theft And Handling	377	91.3%	36	8.7%
G Fraud And Forgery	36	87.8%	5	12.2%
H Criminal Damage	143	89.4%	17	10.6%
I Drugs Offences	114	94.2%	7	5.8%
J Public Order Offences	215	84.0%	41	16.0%
K All Other Offences (excluding Motoring)	108	85.7%	18	14.3%
L Motoring Offences	763	89.6%	89	10.4%
Admin Finalisations	0	0.0%	26	100.0%
TOTAL	2,171	85.5%	368	14.5%