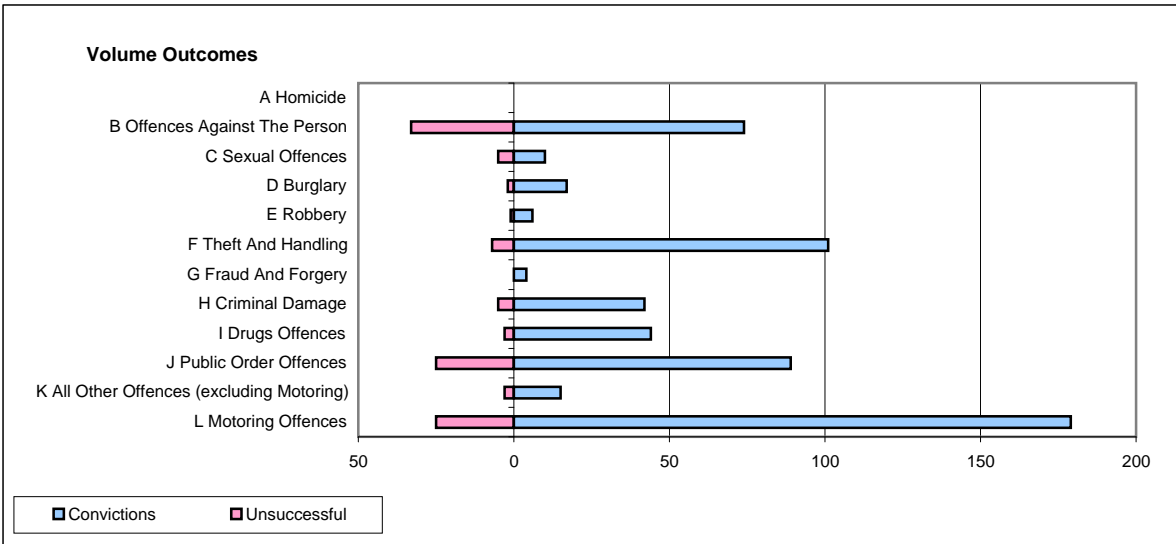
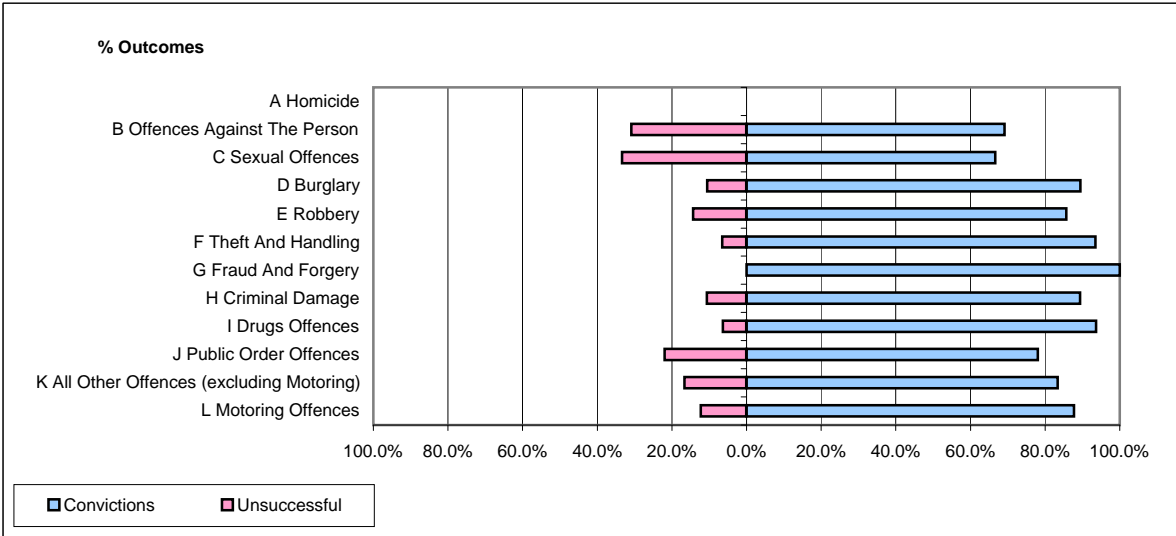


CPS OUTCOMES BY PRINCIPAL OFFENCE CATEGORY

February 2009

P16-Gwent



	Convictions		Unsuccessful	
	Number of Defendants	%	Number of Defendants	%
A Homicide	0	0	0	0
B Offences Against The Person	74	69.2%	33	30.8%
C Sexual Offences	10	66.7%	5	33.3%
D Burglary	17	89.5%	2	10.5%
E Robbery	6	85.7%	1	14.3%
F Theft And Handling	101	93.5%	7	6.5%
G Fraud And Forgery	4	100.0%	0	0.0%
H Criminal Damage	42	89.4%	5	10.6%
I Drugs Offences	44	93.6%	3	6.4%
J Public Order Offences	89	78.1%	25	21.9%
K All Other Offences (excluding Motoring)	15	83.3%	3	16.7%
L Motoring Offences	179	87.7%	25	12.3%
Admin Finalisations	0	0.0%	5	100.0%
TOTAL	581	83.6%	114	16.4%