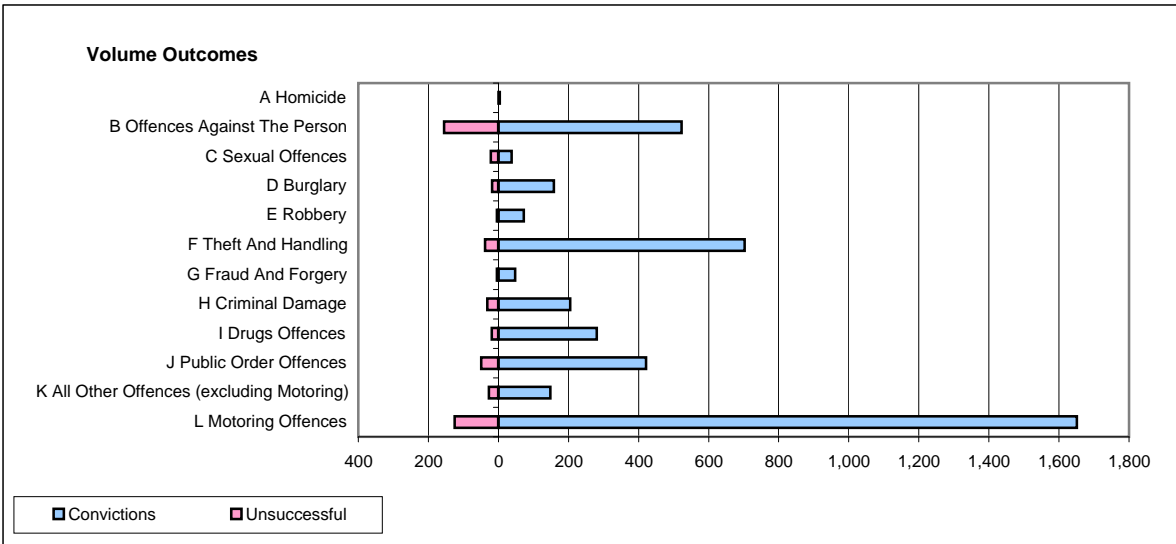
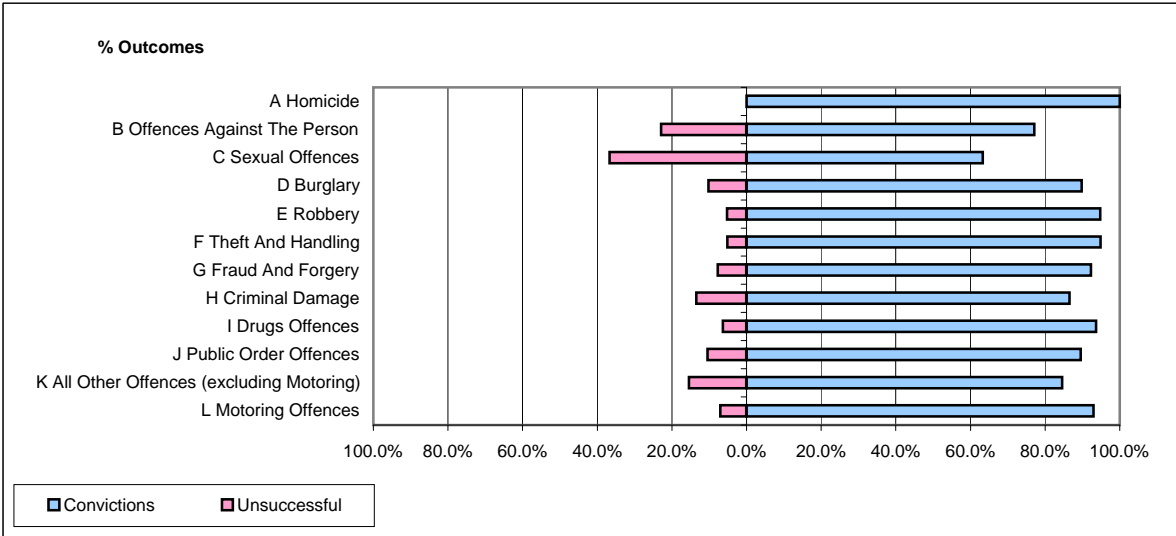


CPS OUTCOMES BY PRINCIPAL OFFENCE CATEGORY

February 2009

P15-GreaterManchester



	Convictions		Unsuccessful	
	Number of Defendants	%	Number of Defendants	%
A Homicide	4	100.0%	0	0.0%
B Offences Against The Person	523	77.1%	155	22.9%
C Sexual Offences	38	63.3%	22	36.7%
D Burglary	158	89.8%	18	10.2%
E Robbery	72	94.7%	4	5.3%
F Theft And Handling	703	94.9%	38	5.1%
G Fraud And Forgery	48	92.3%	4	7.7%
H Criminal Damage	205	86.5%	32	13.5%
I Drugs Offences	281	93.7%	19	6.3%
J Public Order Offences	421	89.6%	49	10.4%
K All Other Offences (excluding Motoring)	148	84.6%	27	15.4%
L Motoring Offences	1,651	93.0%	125	7.0%
Admin Finalisations	0	0.0%	51	100.0%
TOTAL	4,252	88.7%	544	11.3%