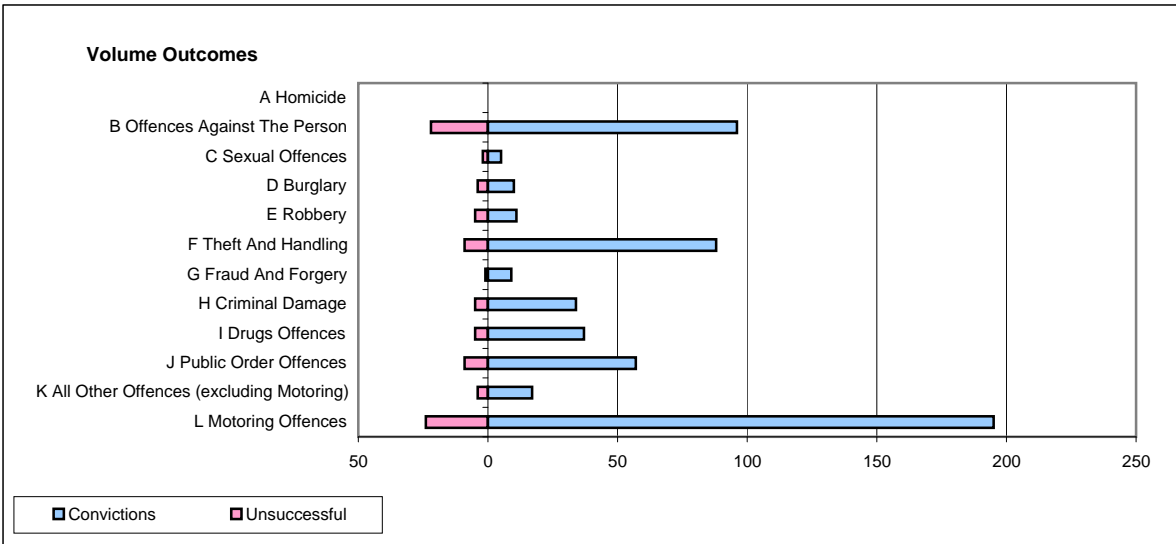
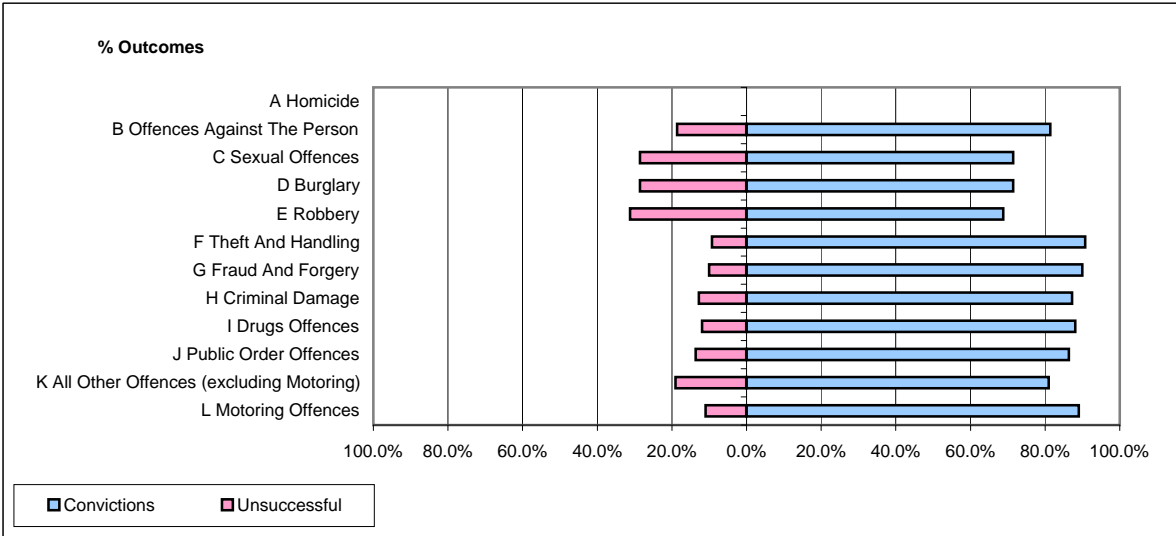


**CPS OUTCOMES BY PRINCIPAL OFFENCE CATEGORY**

**February 2009**

**P14-Gloucestershire**



	Convictions		Unsuccessful	
	Number of Defendants	%	Number of Defendants	%
<b>A Homicide</b>	<b>0</b>	<b>0</b>	<b>0</b>	<b>0</b>
<b>B Offences Against The Person</b>	<b>96</b>	<b>81.4%</b>	<b>22</b>	<b>18.6%</b>
<b>C Sexual Offences</b>	<b>5</b>	<b>71.4%</b>	<b>2</b>	<b>28.6%</b>
<b>D Burglary</b>	<b>10</b>	<b>71.4%</b>	<b>4</b>	<b>28.6%</b>
<b>E Robbery</b>	<b>11</b>	<b>68.8%</b>	<b>5</b>	<b>31.3%</b>
<b>F Theft And Handling</b>	<b>88</b>	<b>90.7%</b>	<b>9</b>	<b>9.3%</b>
<b>G Fraud And Forgery</b>	<b>9</b>	<b>90.0%</b>	<b>1</b>	<b>10.0%</b>
<b>H Criminal Damage</b>	<b>34</b>	<b>87.2%</b>	<b>5</b>	<b>12.8%</b>
<b>I Drugs Offences</b>	<b>37</b>	<b>88.1%</b>	<b>5</b>	<b>11.9%</b>
<b>J Public Order Offences</b>	<b>57</b>	<b>86.4%</b>	<b>9</b>	<b>13.6%</b>
<b>K All Other Offences (excluding Motoring)</b>	<b>17</b>	<b>81.0%</b>	<b>4</b>	<b>19.0%</b>
<b>L Motoring Offences</b>	<b>195</b>	<b>89.0%</b>	<b>24</b>	<b>11.0%</b>
<b>Admin Finalisations</b>	<b>0</b>	<b>0.0%</b>	<b>9</b>	<b>100.0%</b>
<b>TOTAL</b>	<b>559</b>	<b>85.0%</b>	<b>99</b>	<b>15.0%</b>