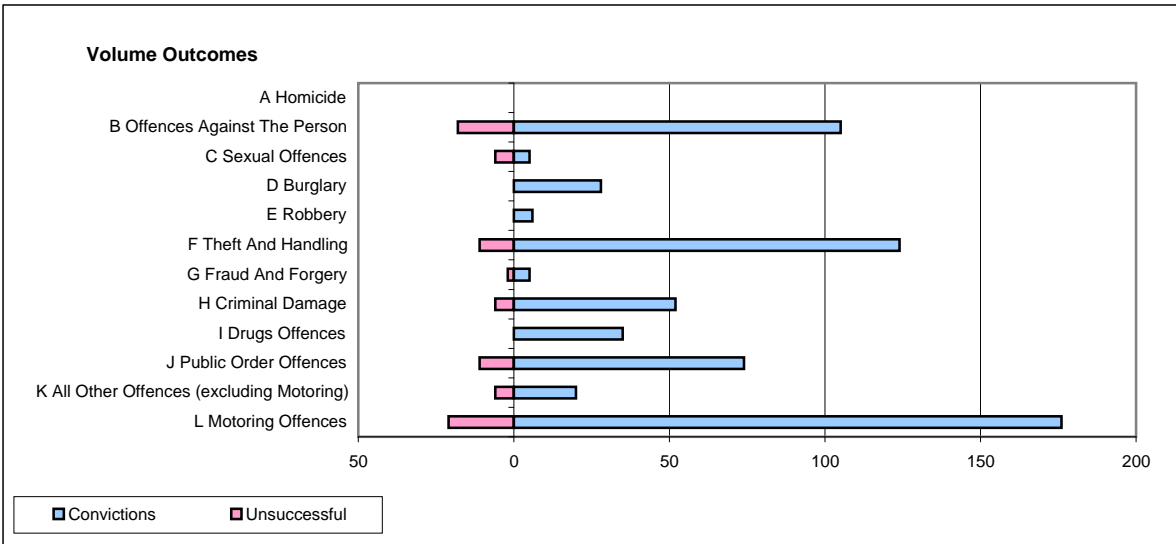
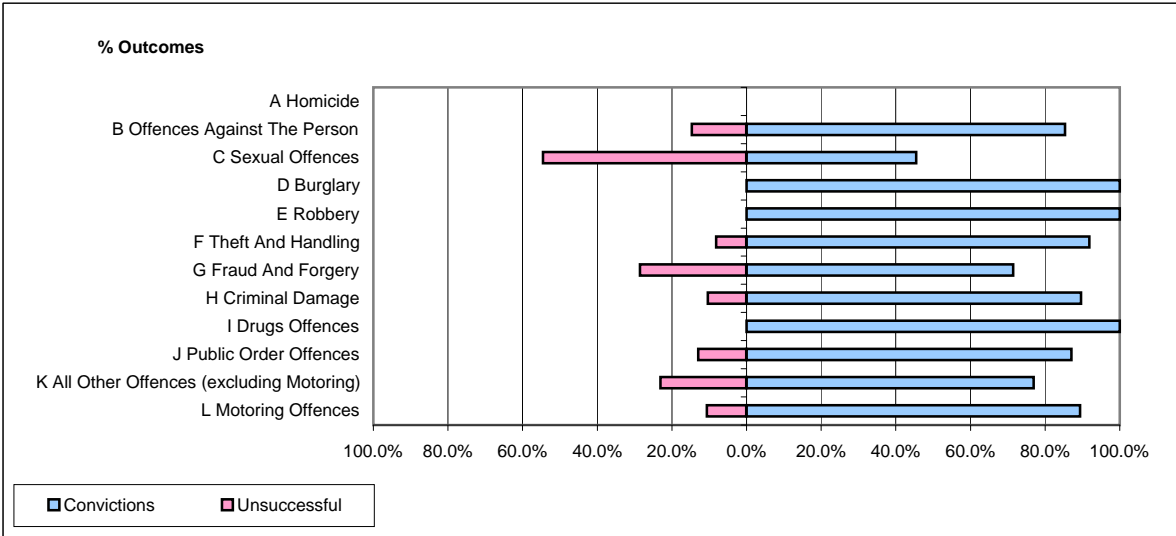


**CPS OUTCOMES BY PRINCIPAL OFFENCE CATEGORY**

**February 2009**

**P11-Durham**



	Convictions		Unsuccessful	
	Number of Defendants	%	Number of Defendants	%
<b>A Homicide</b>	<b>0</b>	<b>0</b>	<b>0</b>	<b>0</b>
<b>B Offences Against The Person</b>	<b>105</b>	<b>85.4%</b>	<b>18</b>	<b>14.6%</b>
<b>C Sexual Offences</b>	<b>5</b>	<b>45.5%</b>	<b>6</b>	<b>54.5%</b>
<b>D Burglary</b>	<b>28</b>	<b>100.0%</b>	<b>0</b>	<b>0.0%</b>
<b>E Robbery</b>	<b>6</b>	<b>100.0%</b>	<b>0</b>	<b>0.0%</b>
<b>F Theft And Handling</b>	<b>124</b>	<b>91.9%</b>	<b>11</b>	<b>8.1%</b>
<b>G Fraud And Forgery</b>	<b>5</b>	<b>71.4%</b>	<b>2</b>	<b>28.6%</b>
<b>H Criminal Damage</b>	<b>52</b>	<b>89.7%</b>	<b>6</b>	<b>10.3%</b>
<b>I Drugs Offences</b>	<b>35</b>	<b>100.0%</b>	<b>0</b>	<b>0.0%</b>
<b>J Public Order Offences</b>	<b>74</b>	<b>87.1%</b>	<b>11</b>	<b>12.9%</b>
<b>K All Other Offences (excluding Motoring)</b>	<b>20</b>	<b>76.9%</b>	<b>6</b>	<b>23.1%</b>
<b>L Motoring Offences</b>	<b>176</b>	<b>89.3%</b>	<b>21</b>	<b>10.7%</b>
<b>Admin Finalisations</b>	<b>0</b>	<b>0.0%</b>	<b>1</b>	<b>100.0%</b>
<b>TOTAL</b>	<b>630</b>	<b>88.5%</b>	<b>82</b>	<b>11.5%</b>