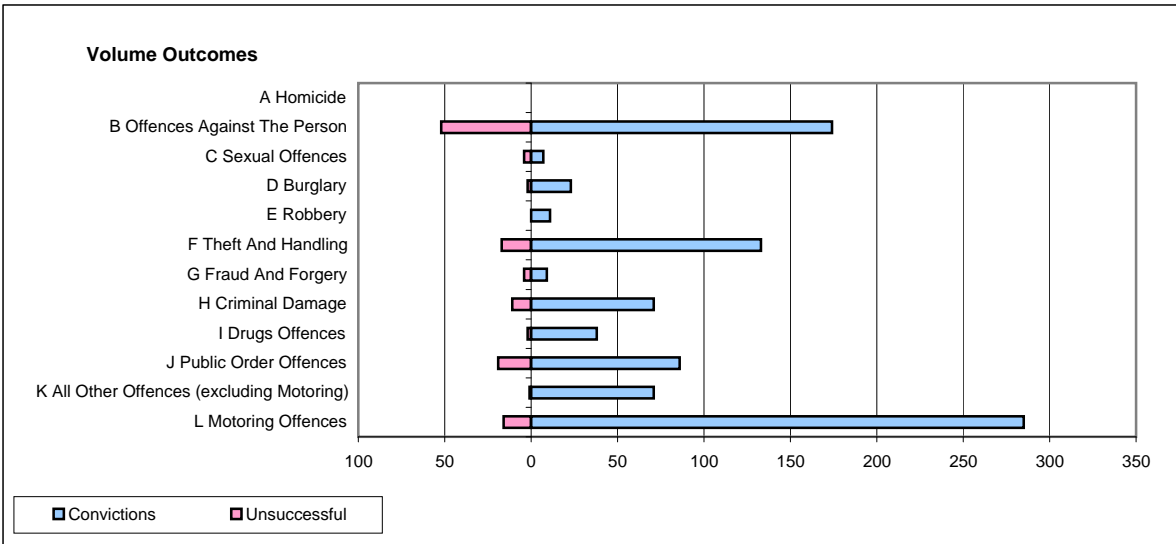
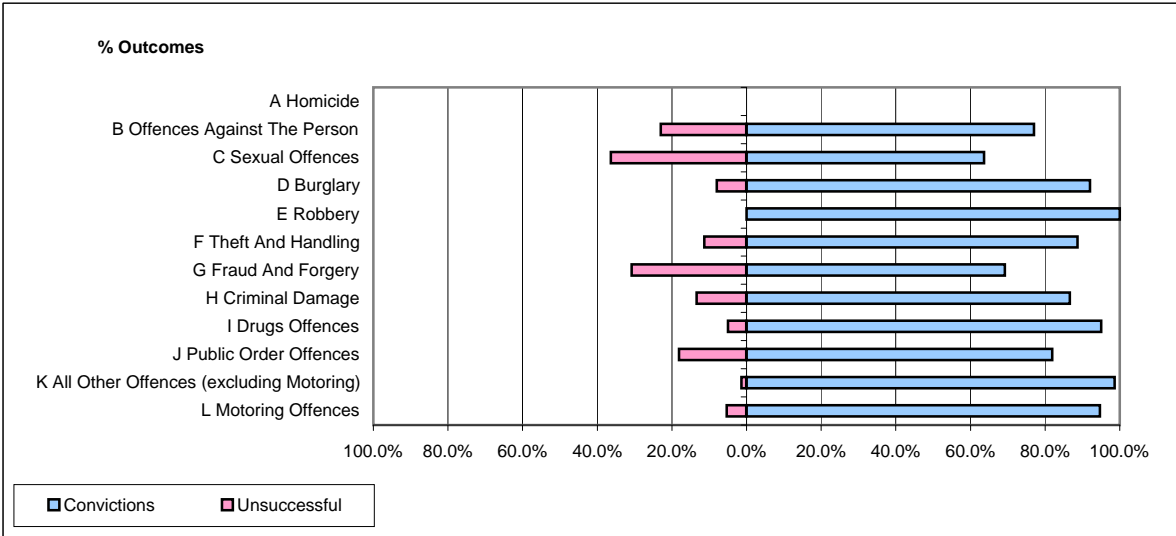


CPS OUTCOMES BY PRINCIPAL OFFENCE CATEGORY

February 2009

P08-Derbyshire



	Convictions		Unsuccessful	
	Number of Defendants	%	Number of Defendants	%
A Homicide	0	0	0	0
B Offences Against The Person	174	77.0%	52	23.0%
C Sexual Offences	7	63.6%	4	36.4%
D Burglary	23	92.0%	2	8.0%
E Robbery	11	100.0%	0	0.0%
F Theft And Handling	133	88.7%	17	11.3%
G Fraud And Forgery	9	69.2%	4	30.8%
H Criminal Damage	71	86.6%	11	13.4%
I Drugs Offences	38	95.0%	2	5.0%
J Public Order Offences	86	81.9%	19	18.1%
K All Other Offences (excluding Motoring)	71	98.6%	1	1.4%
L Motoring Offences	285	94.7%	16	5.3%
Admin Finalisations	0	0.0%	15	100.0%
TOTAL	908	86.4%	143	13.6%