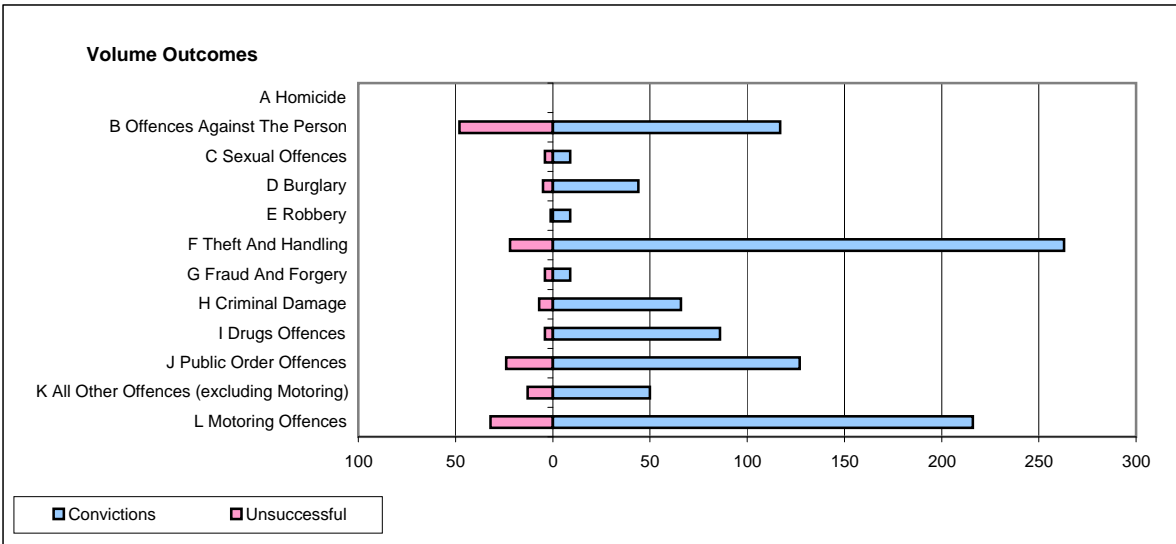
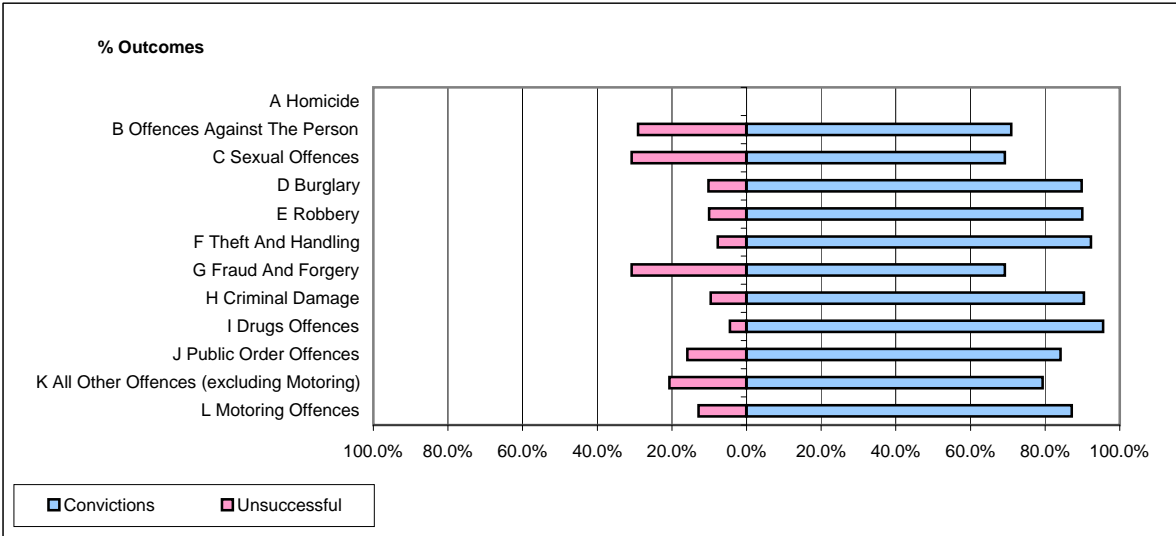


CPS OUTCOMES BY PRINCIPAL OFFENCE CATEGORY

February 2009

P06-Cleveland



	Convictions		Unsuccessful	
	Number of Defendants	%	Number of Defendants	%
A Homicide	0	0	0	0
B Offences Against The Person	117	70.9%	48	29.1%
C Sexual Offences	9	69.2%	4	30.8%
D Burglary	44	89.8%	5	10.2%
E Robbery	9	90.0%	1	10.0%
F Theft And Handling	263	92.3%	22	7.7%
G Fraud And Forgery	9	69.2%	4	30.8%
H Criminal Damage	66	90.4%	7	9.6%
I Drugs Offences	86	95.6%	4	4.4%
J Public Order Offences	127	84.1%	24	15.9%
K All Other Offences (excluding Motoring)	50	79.4%	13	20.6%
L Motoring Offences	216	87.1%	32	12.9%
Admin Finalisations	0	0.0%	12	100.0%
TOTAL	996	85.0%	176	15.0%