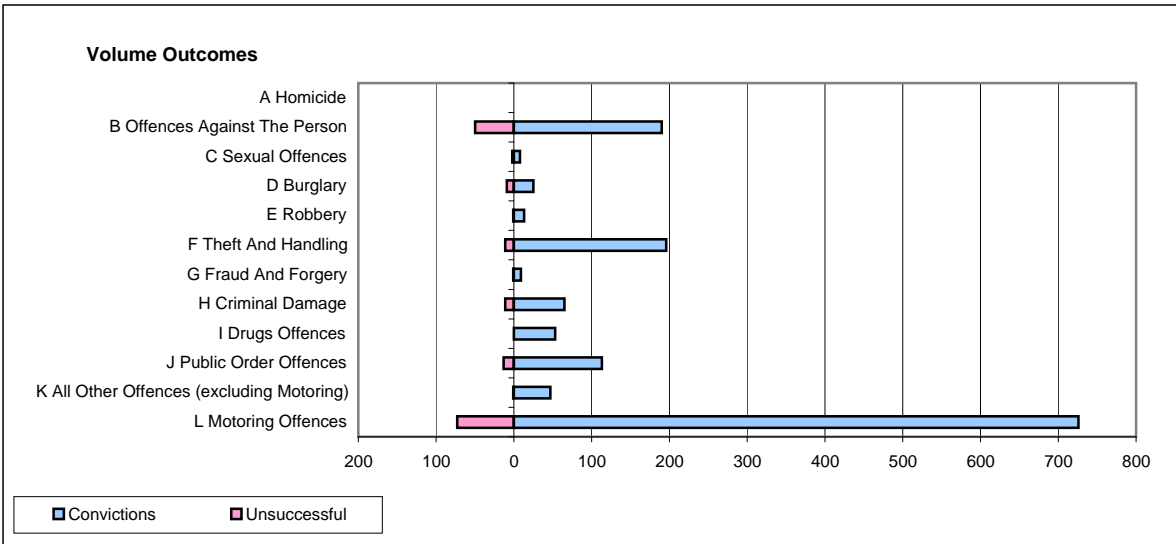
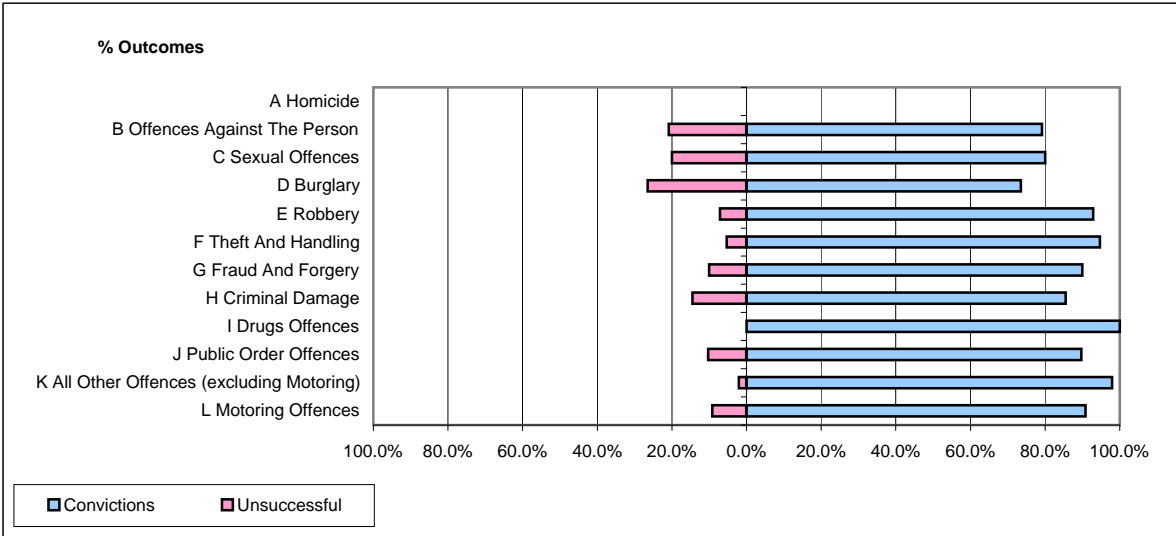


CPS OUTCOMES BY PRINCIPAL OFFENCE CATEGORY

February 2009

P04-Cheshire



	Convictions		Unsuccessful	
	Number of Defendants	%	Number of Defendants	%
A Homicide	0	0	0	0
B Offences Against The Person	190	79.2%	50	20.8%
C Sexual Offences	8	80.0%	2	20.0%
D Burglary	25	73.5%	9	26.5%
E Robbery	13	92.9%	1	7.1%
F Theft And Handling	196	94.7%	11	5.3%
G Fraud And Forgery	9	90.0%	1	10.0%
H Criminal Damage	65	85.5%	11	14.5%
I Drugs Offences	53	100.0%	0	0.0%
J Public Order Offences	113	89.7%	13	10.3%
K All Other Offences (excluding Motoring)	47	97.9%	1	2.1%
L Motoring Offences	726	90.9%	73	9.1%
Admin Finalisations	0	0.0%	15	100.0%
TOTAL	1,445	88.5%	187	11.5%