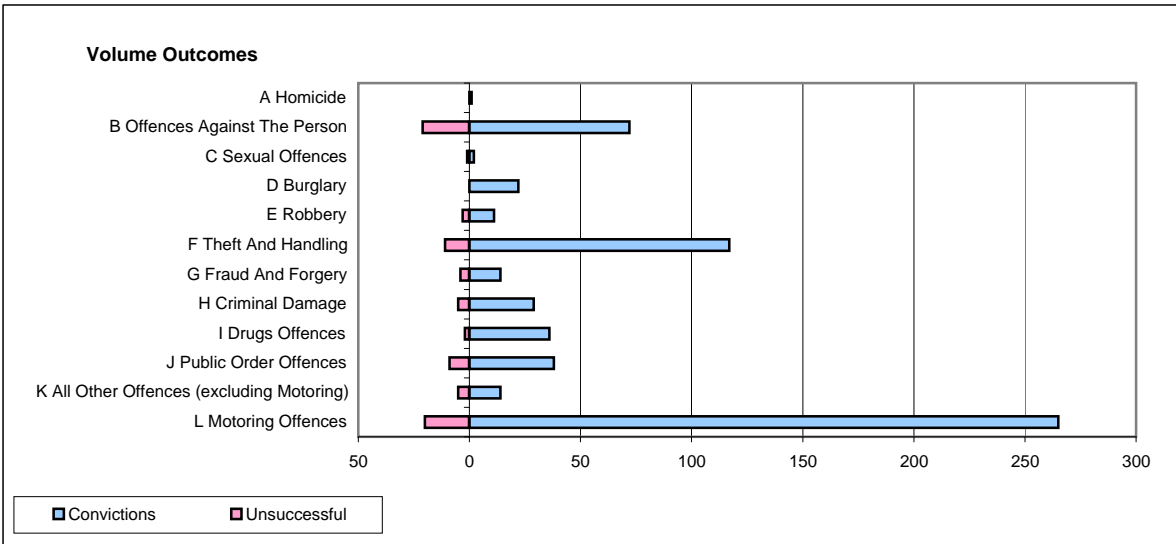
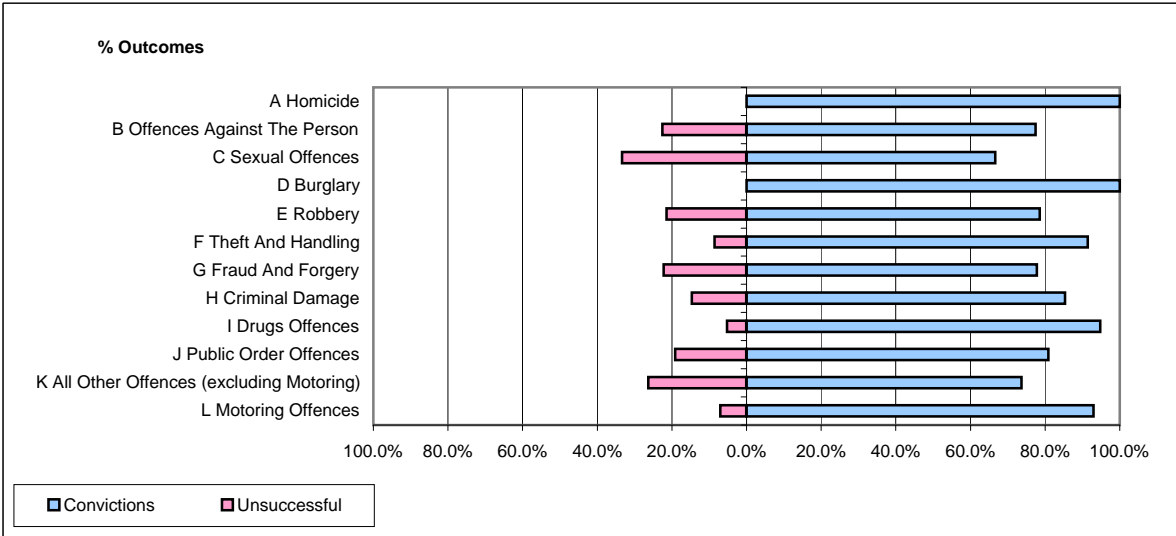


**CPS OUTCOMES BY PRINCIPAL OFFENCE CATEGORY**

**February 2009**

**P02-Bedfordshire**



	Convictions		Unsuccessful	
	Number of Defendants	%	Number of Defendants	%
<b>A Homicide</b>	<b>1</b>	<b>100.0%</b>	<b>0</b>	<b>0.0%</b>
<b>B Offences Against The Person</b>	<b>72</b>	<b>77.4%</b>	<b>21</b>	<b>22.6%</b>
<b>C Sexual Offences</b>	<b>2</b>	<b>66.7%</b>	<b>1</b>	<b>33.3%</b>
<b>D Burglary</b>	<b>22</b>	<b>100.0%</b>	<b>0</b>	<b>0.0%</b>
<b>E Robbery</b>	<b>11</b>	<b>78.6%</b>	<b>3</b>	<b>21.4%</b>
<b>F Theft And Handling</b>	<b>117</b>	<b>91.4%</b>	<b>11</b>	<b>8.6%</b>
<b>G Fraud And Forgery</b>	<b>14</b>	<b>77.8%</b>	<b>4</b>	<b>22.2%</b>
<b>H Criminal Damage</b>	<b>29</b>	<b>85.3%</b>	<b>5</b>	<b>14.7%</b>
<b>I Drugs Offences</b>	<b>36</b>	<b>94.7%</b>	<b>2</b>	<b>5.3%</b>
<b>J Public Order Offences</b>	<b>38</b>	<b>80.9%</b>	<b>9</b>	<b>19.1%</b>
<b>K All Other Offences (excluding Motoring)</b>	<b>14</b>	<b>73.7%</b>	<b>5</b>	<b>26.3%</b>
<b>L Motoring Offences</b>	<b>265</b>	<b>93.0%</b>	<b>20</b>	<b>7.0%</b>
<b>Admin Finalisations</b>	<b>0</b>	<b>0.0%</b>	<b>9</b>	<b>100.0%</b>
<b>TOTAL</b>	<b>621</b>	<b>87.3%</b>	<b>90</b>	<b>12.7%</b>