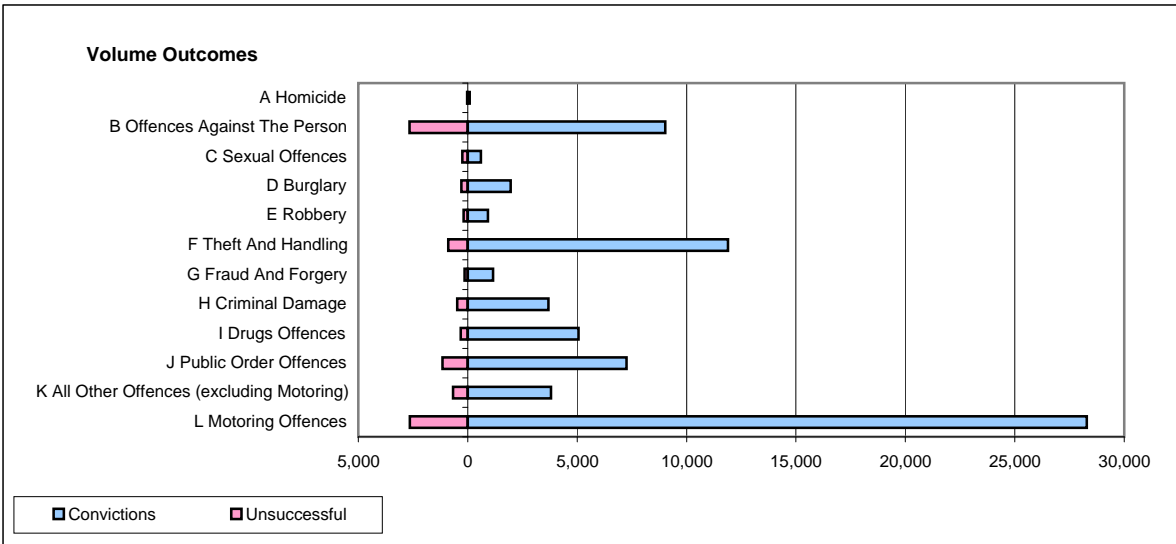
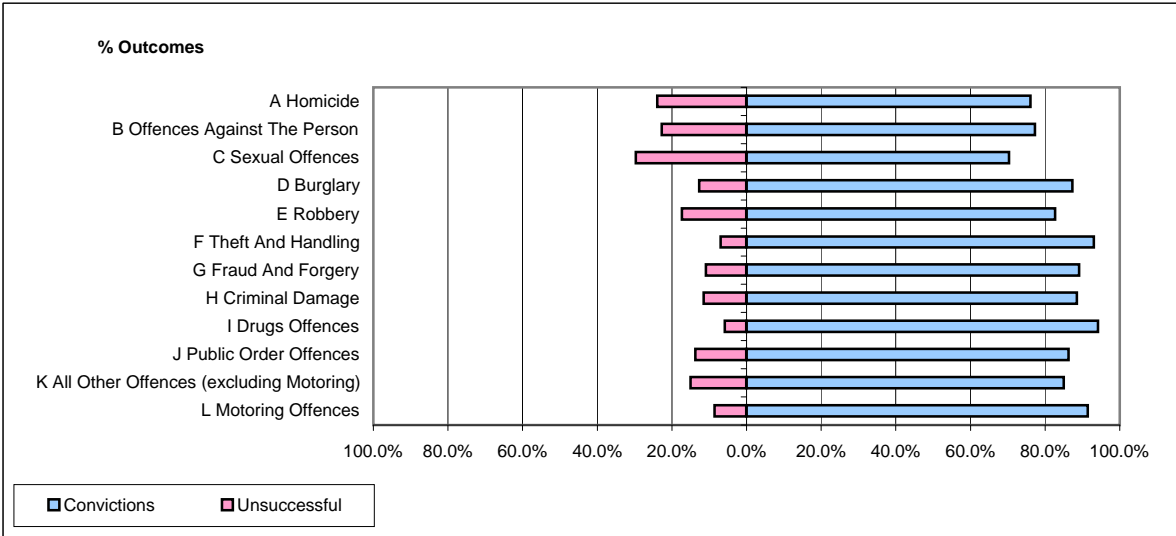


CPS OUTCOMES BY PRINCIPAL OFFENCE CATEGORY

January 2009

42 Areas



	Convictions		Unsuccessful	
	Number of Defendants	%	Number of Defendants	%
A Homicide	89	76.1%	28	23.9%
B Offences Against The Person	9,028	77.3%	2,653	22.7%
C Sexual Offences	597	70.3%	252	29.7%
D Burglary	1,969	87.3%	286	12.7%
E Robbery	923	82.7%	193	17.3%
F Theft And Handling	11,891	93.1%	884	6.9%
G Fraud And Forgery	1,151	89.1%	141	10.9%
H Criminal Damage	3,687	88.5%	477	11.5%
I Drugs Offences	5,067	94.2%	314	5.8%
J Public Order Offences	7,256	86.3%	1,155	13.7%
K All Other Offences (excluding Motoring)	3,809	85.0%	674	15.0%
L Motoring Offences	28,294	91.4%	2,652	8.6%
Admin Finalisations	0	0.0%	1,261	100.0%
TOTAL	73,761	87.1%	10,970	12.9%