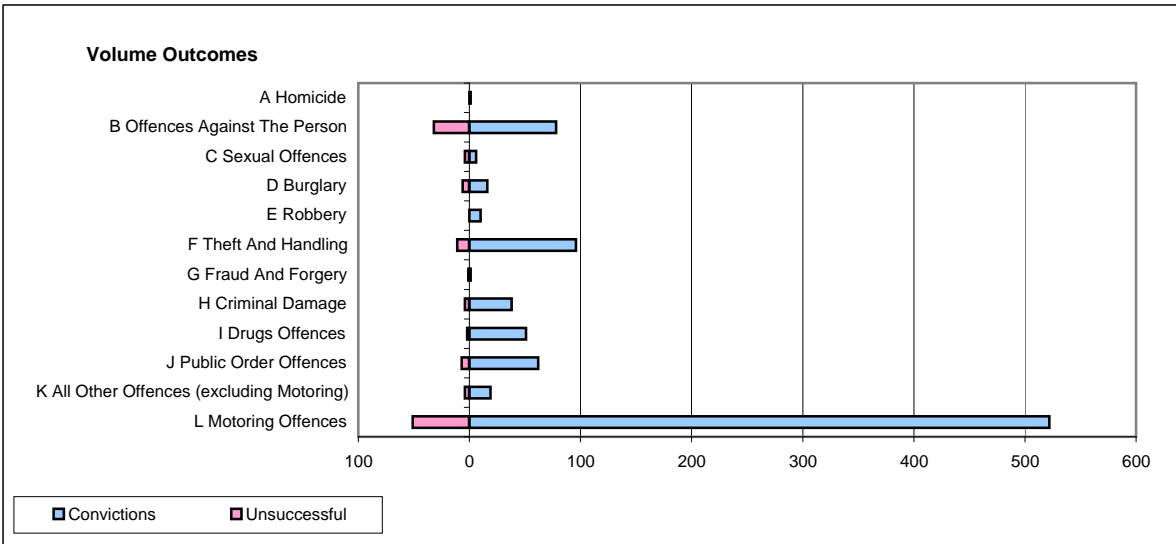
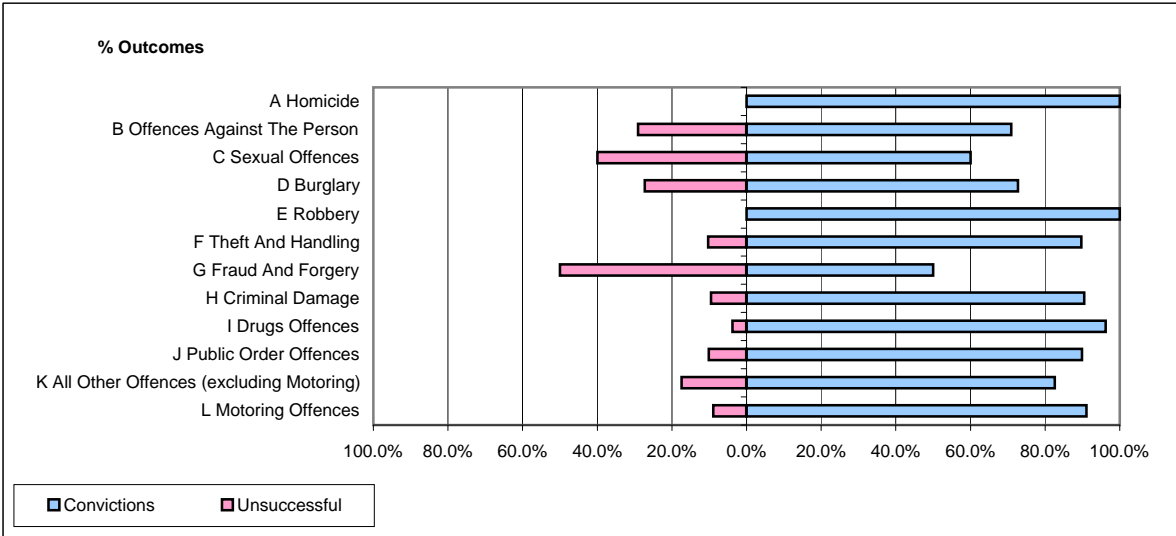


CPS OUTCOMES BY PRINCIPAL OFFENCE CATEGORY

January 2009

P43-Wiltshire



	Convictions		Unsuccessful	
	Number of Defendants	%	Number of Defendants	%
A Homicide	1	100.0%	0	0.0%
B Offences Against The Person	78	70.9%	32	29.1%
C Sexual Offences	6	60.0%	4	40.0%
D Burglary	16	72.7%	6	27.3%
E Robbery	10	100.0%	0	0.0%
F Theft And Handling	96	89.7%	11	10.3%
G Fraud And Forgery	1	50.0%	1	50.0%
H Criminal Damage	38	90.5%	4	9.5%
I Drugs Offences	51	96.2%	2	3.8%
J Public Order Offences	62	89.9%	7	10.1%
K All Other Offences (excluding Motoring)	19	82.6%	4	17.4%
L Motoring Offences	522	91.1%	51	8.9%
Admin Finalisations	0	0.0%	9	100.0%
TOTAL	900	87.3%	131	12.7%