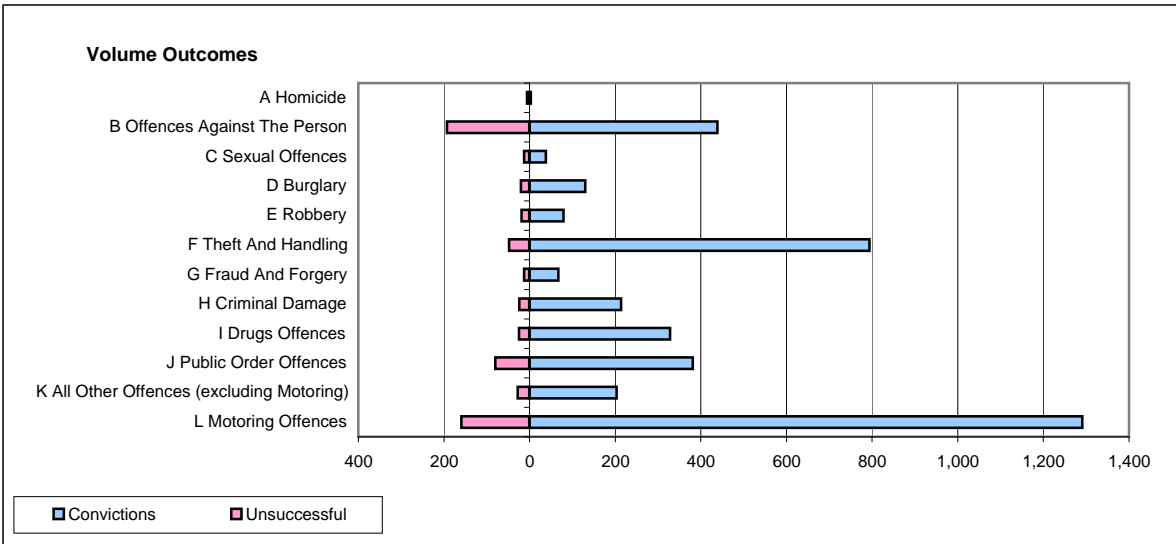
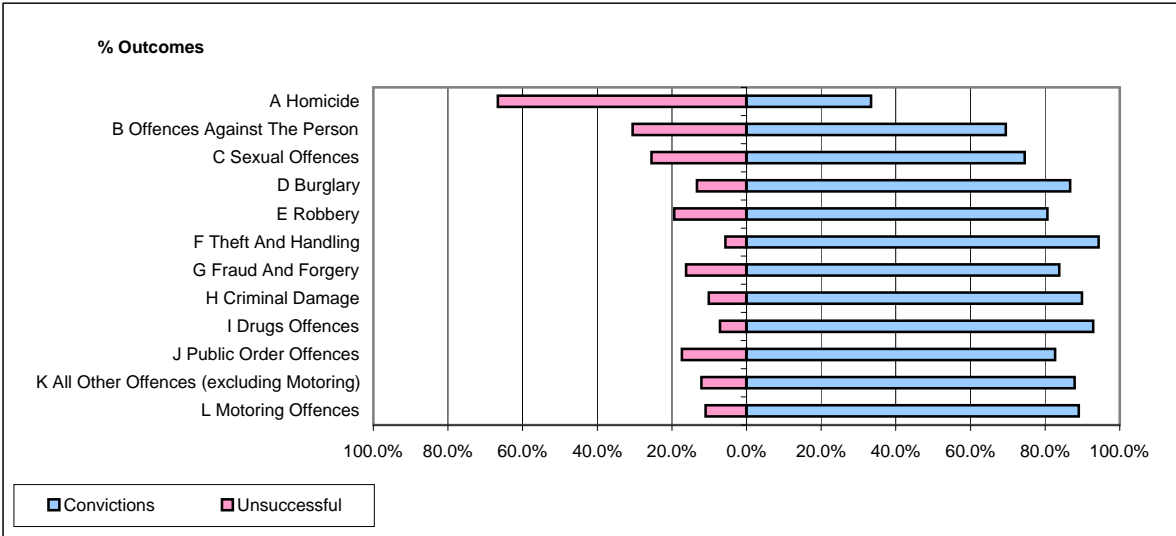


**CPS OUTCOMES BY PRINCIPAL OFFENCE CATEGORY**

January 2009

**P41-WestMidlands**



	Convictions		Unsuccessful	
	Number of Defendants	%	Number of Defendants	%
<b>A Homicide</b>	<b>3</b>	<b>33.3%</b>	<b>6</b>	<b>66.7%</b>
<b>B Offences Against The Person</b>	<b>439</b>	<b>69.5%</b>	<b>193</b>	<b>30.5%</b>
<b>C Sexual Offences</b>	<b>38</b>	<b>74.5%</b>	<b>13</b>	<b>25.5%</b>
<b>D Burglary</b>	<b>130</b>	<b>86.7%</b>	<b>20</b>	<b>13.3%</b>
<b>E Robbery</b>	<b>79</b>	<b>80.6%</b>	<b>19</b>	<b>19.4%</b>
<b>F Theft And Handling</b>	<b>794</b>	<b>94.3%</b>	<b>48</b>	<b>5.7%</b>
<b>G Fraud And Forgery</b>	<b>67</b>	<b>83.8%</b>	<b>13</b>	<b>16.3%</b>
<b>H Criminal Damage</b>	<b>214</b>	<b>89.9%</b>	<b>24</b>	<b>10.1%</b>
<b>I Drugs Offences</b>	<b>328</b>	<b>92.9%</b>	<b>25</b>	<b>7.1%</b>
<b>J Public Order Offences</b>	<b>381</b>	<b>82.6%</b>	<b>80</b>	<b>17.4%</b>
<b>K All Other Offences (excluding Motoring)</b>	<b>203</b>	<b>87.9%</b>	<b>28</b>	<b>12.1%</b>
<b>L Motoring Offences</b>	<b>1,291</b>	<b>89.0%</b>	<b>159</b>	<b>11.0%</b>
<b>Admin Finalisations</b>	<b>0</b>	<b>0.0%</b>	<b>48</b>	<b>100.0%</b>
<b>TOTAL</b>	<b>3,967</b>	<b>85.4%</b>	<b>676</b>	<b>14.6%</b>