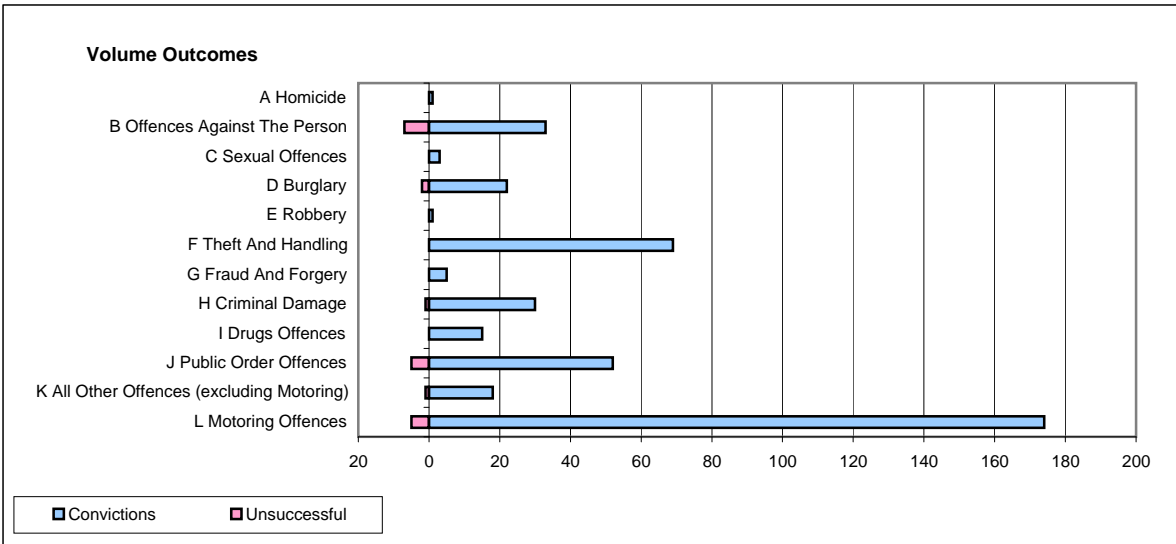
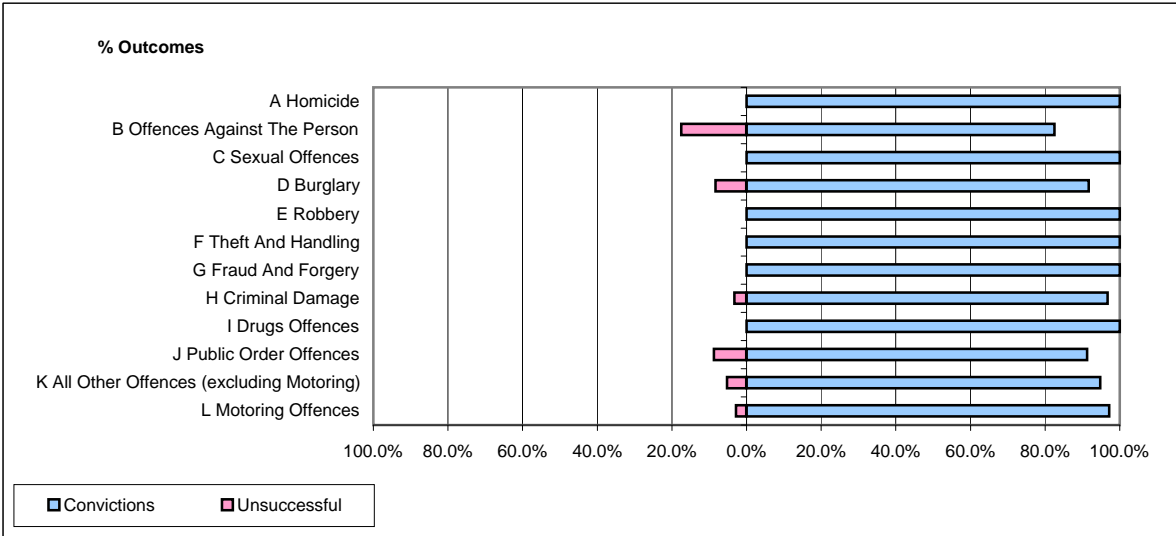


CPS OUTCOMES BY PRINCIPAL OFFENCE CATEGORY

January 2009

P39-Warwickshire



	Convictions		Unsuccessful	
	Number of Defendants	%	Number of Defendants	%
A Homicide	1	100.0%	0	0.0%
B Offences Against The Person	33	82.5%	7	17.5%
C Sexual Offences	3	100.0%	0	0.0%
D Burglary	22	91.7%	2	8.3%
E Robbery	1	100.0%	0	0.0%
F Theft And Handling	69	100.0%	0	0.0%
G Fraud And Forgery	5	100.0%	0	0.0%
H Criminal Damage	30	96.8%	1	3.2%
I Drugs Offences	15	100.0%	0	0.0%
J Public Order Offences	52	91.2%	5	8.8%
K All Other Offences (excluding Motoring)	18	94.7%	1	5.3%
L Motoring Offences	174	97.2%	5	2.8%
Admin Finalisations	0	0.0%	8	100.0%
TOTAL	423	93.6%	29	6.4%