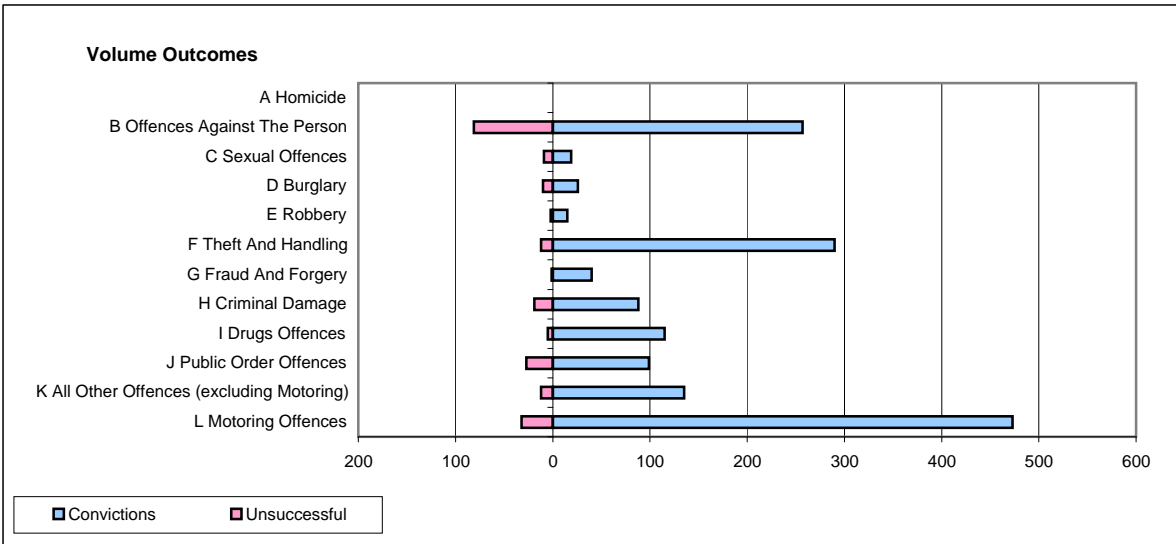
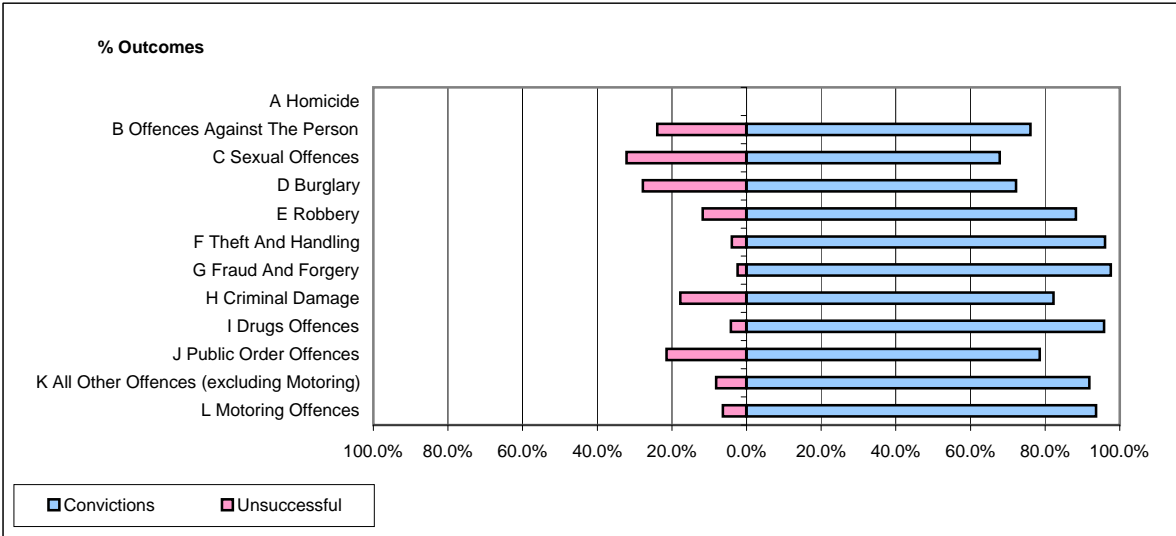


CPS OUTCOMES BY PRINCIPAL OFFENCE CATEGORY

January 2009

P37-Sussex



	Convictions		Unsuccessful	
	Number of Defendants	%	Number of Defendants	%
A Homicide	0	0	0	0
B Offences Against The Person	257	76.0%	81	24.0%
C Sexual Offences	19	67.9%	9	32.1%
D Burglary	26	72.2%	10	27.8%
E Robbery	15	88.2%	2	11.8%
F Theft And Handling	290	96.0%	12	4.0%
G Fraud And Forgery	40	97.6%	1	2.4%
H Criminal Damage	88	82.2%	19	17.8%
I Drugs Offences	115	95.8%	5	4.2%
J Public Order Offences	99	78.6%	27	21.4%
K All Other Offences (excluding Motoring)	135	91.8%	12	8.2%
L Motoring Offences	473	93.7%	32	6.3%
Admin Finalisations	0	0.0%	23	100.0%
TOTAL	1,557	87.0%	233	13.0%