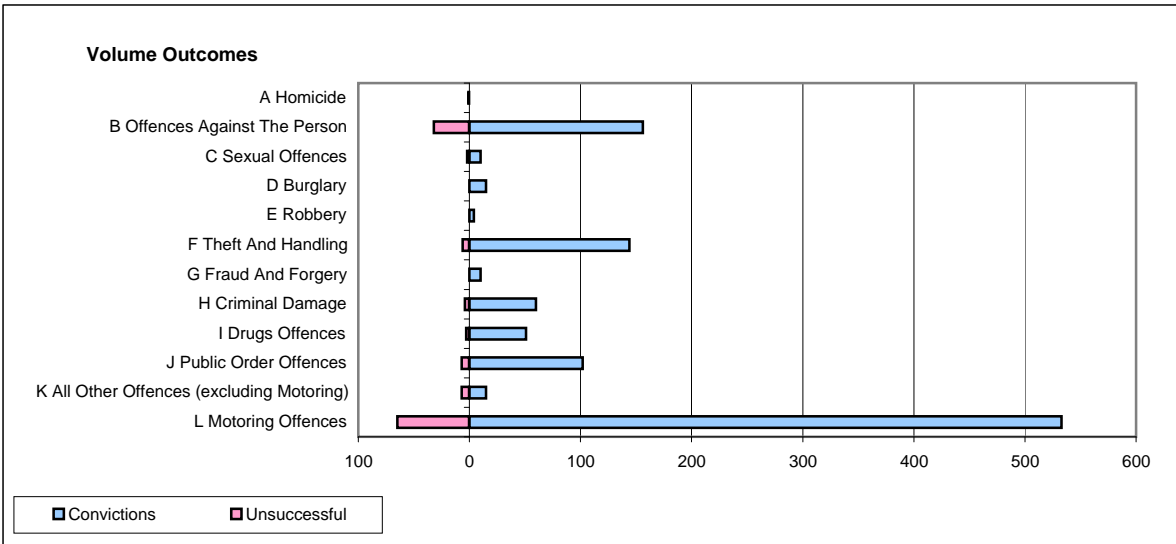
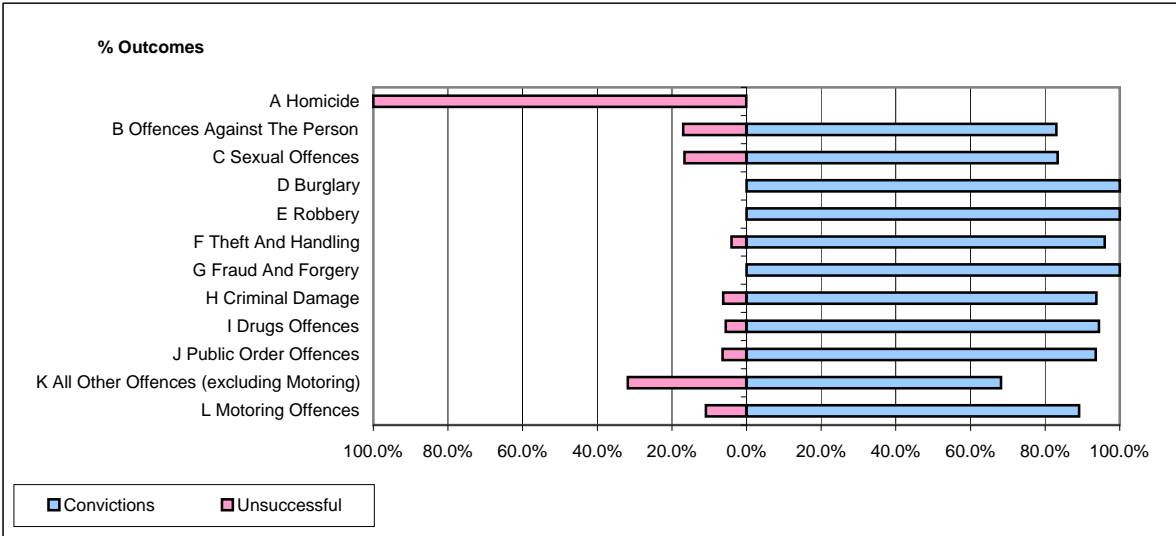


CPS OUTCOMES BY PRINCIPAL OFFENCE CATEGORY

January 2009

P35-Suffolk



	Convictions		Unsuccessful	
	Number of Defendants	%	Number of Defendants	%
A Homicide	0	0.0%	1	100.0%
B Offences Against The Person	156	83.0%	32	17.0%
C Sexual Offences	10	83.3%	2	16.7%
D Burglary	15	100.0%	0	0.0%
E Robbery	4	100.0%	0	0.0%
F Theft And Handling	144	96.0%	6	4.0%
G Fraud And Forgery	10	100.0%	0	0.0%
H Criminal Damage	60	93.8%	4	6.3%
I Drugs Offences	51	94.4%	3	5.6%
J Public Order Offences	102	93.6%	7	6.4%
K All Other Offences (excluding Motoring)	15	68.2%	7	31.8%
L Motoring Offences	533	89.1%	65	10.9%
Admin Finalisations	0	0.0%	18	100.0%
TOTAL	1,100	88.4%	145	11.6%