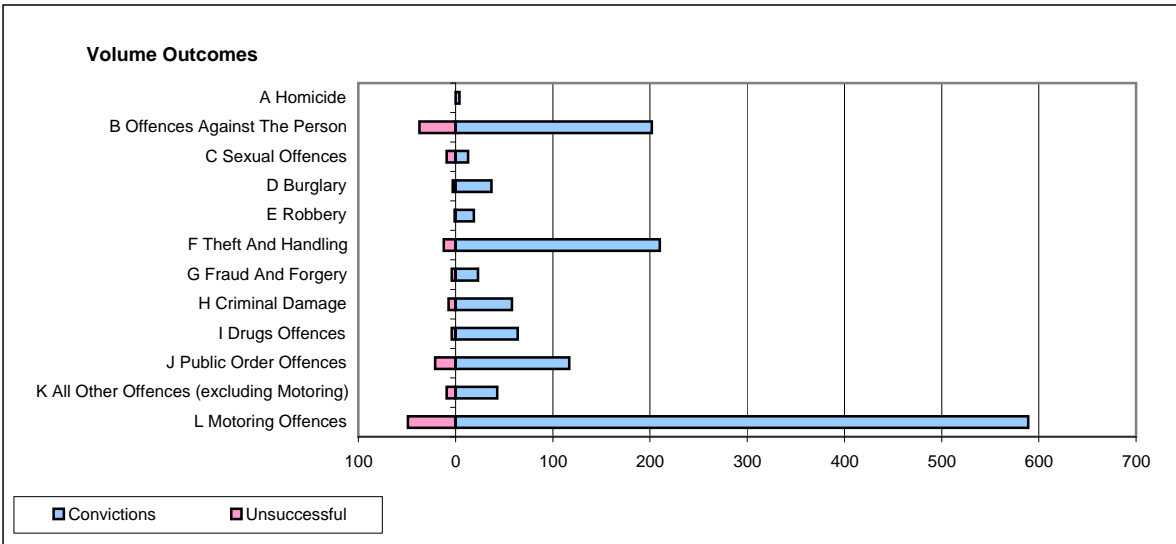
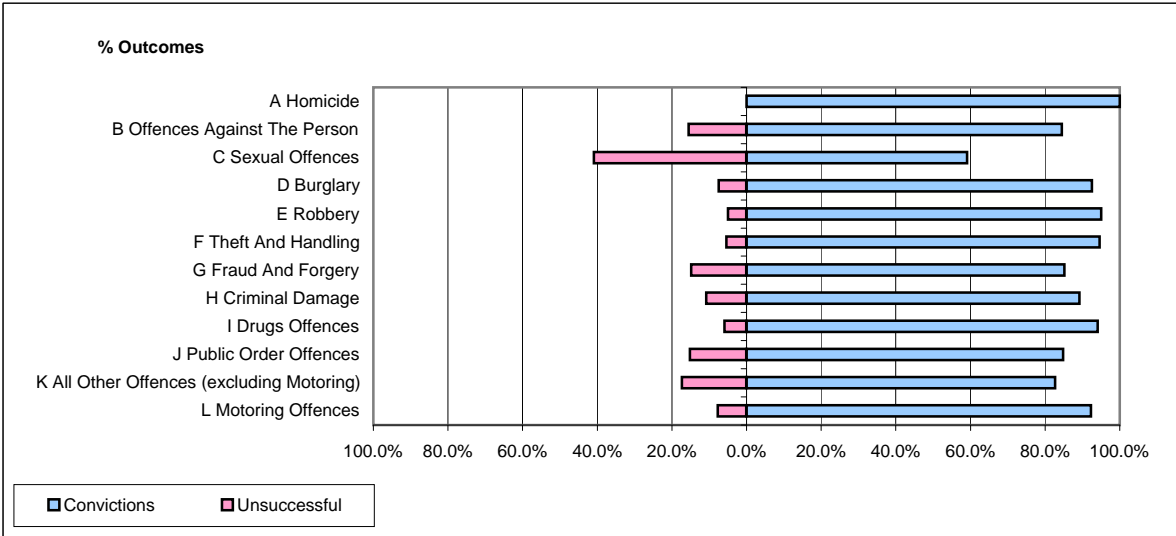


CPS OUTCOMES BY PRINCIPAL OFFENCE CATEGORY

January 2009

P34-Staffordshire



	Convictions		Unsuccessful	
	Number of Defendants	%	Number of Defendants	%
A Homicide	4	100.0%	0	0.0%
B Offences Against The Person	202	84.5%	37	15.5%
C Sexual Offences	13	59.1%	9	40.9%
D Burglary	37	92.5%	3	7.5%
E Robbery	19	95.0%	1	5.0%
F Theft And Handling	210	94.6%	12	5.4%
G Fraud And Forgery	23	85.2%	4	14.8%
H Criminal Damage	58	89.2%	7	10.8%
I Drugs Offences	64	94.1%	4	5.9%
J Public Order Offences	117	84.8%	21	15.2%
K All Other Offences (excluding Motoring)	43	82.7%	9	17.3%
L Motoring Offences	589	92.3%	49	7.7%
Admin Finalisations	0	0.0%	13	100.0%
TOTAL	1,379	89.1%	169	10.9%