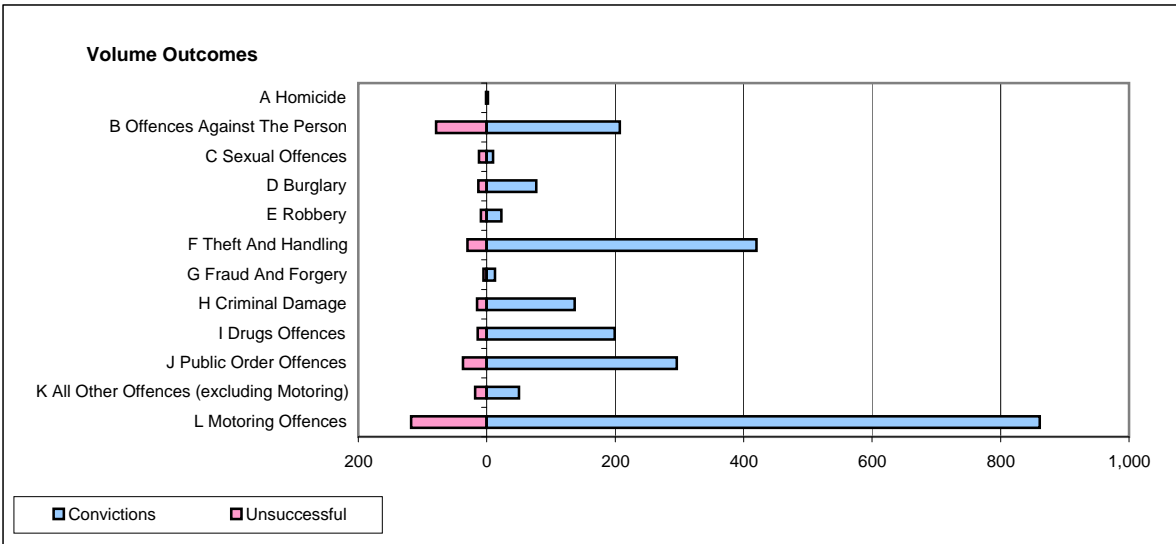
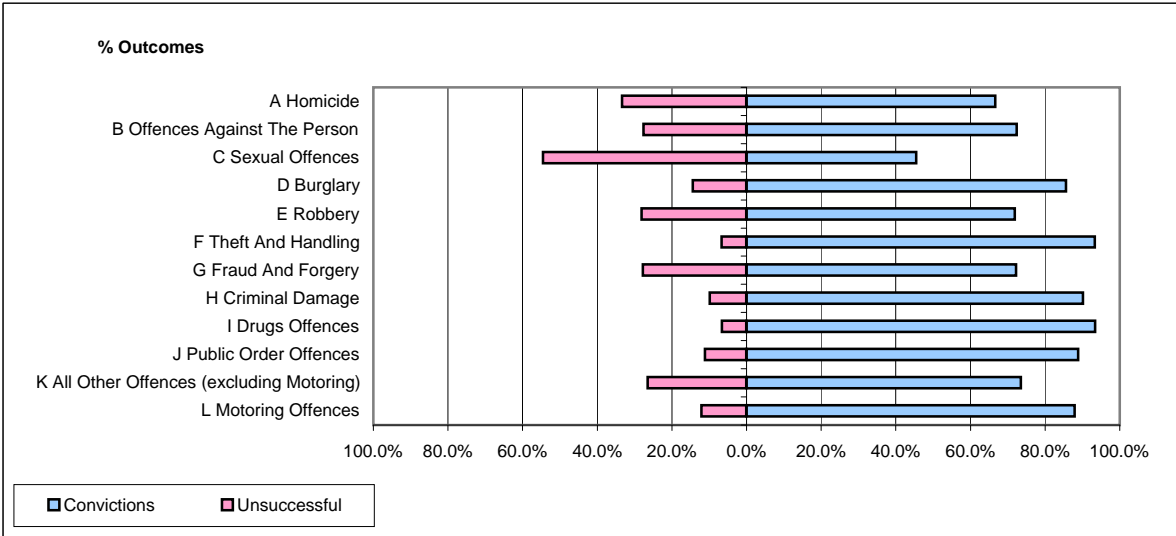


CPS OUTCOMES BY PRINCIPAL OFFENCE CATEGORY

January 2009

P32-SouthWales



	Convictions		Unsuccessful	
	Number of Defendants	%	Number of Defendants	%
A Homicide	2	66.7%	1	33.3%
B Offences Against The Person	207	72.4%	79	27.6%
C Sexual Offences	10	45.5%	12	54.5%
D Burglary	77	85.6%	13	14.4%
E Robbery	23	71.9%	9	28.1%
F Theft And Handling	420	93.3%	30	6.7%
G Fraud And Forgery	13	72.2%	5	27.8%
H Criminal Damage	137	90.1%	15	9.9%
I Drugs Offences	199	93.4%	14	6.6%
J Public Order Offences	296	88.9%	37	11.1%
K All Other Offences (excluding Motoring)	50	73.5%	18	26.5%
L Motoring Offences	861	87.9%	118	12.1%
Admin Finalisations	0	0.0%	53	100.0%
TOTAL	2,295	85.0%	404	15.0%