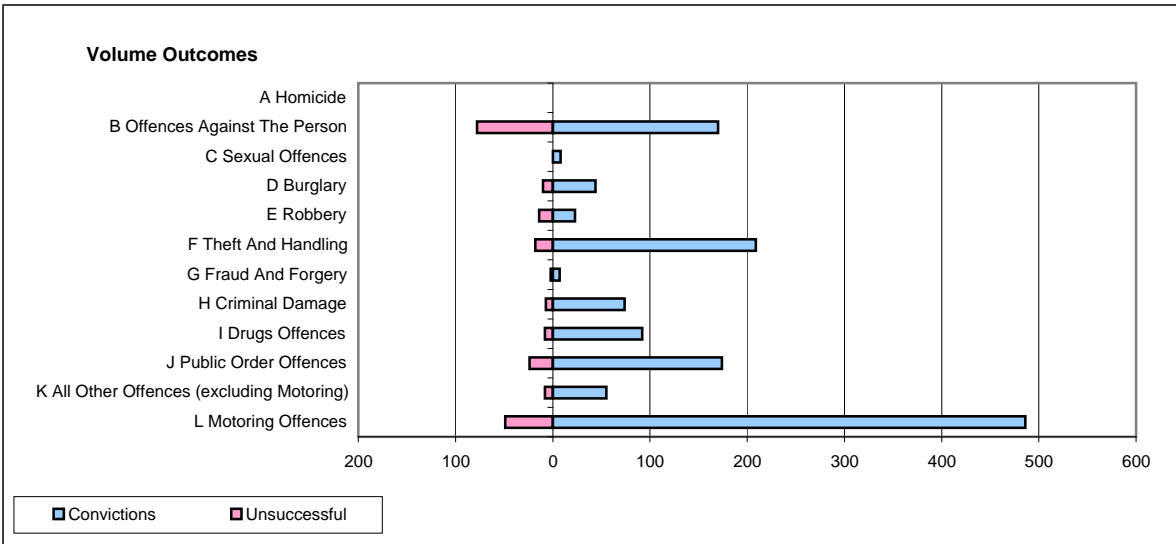
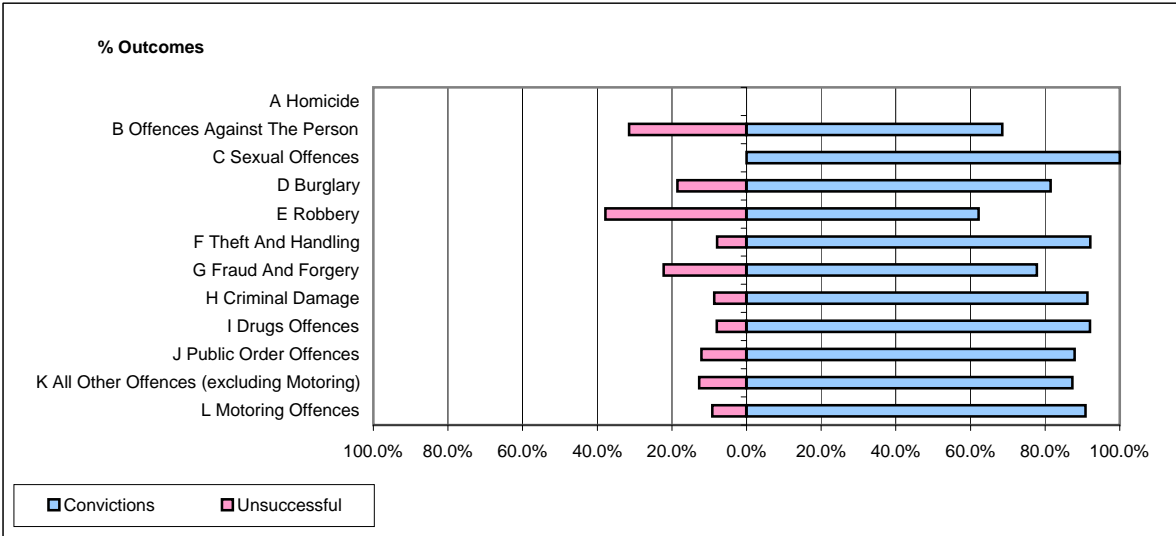


CPS OUTCOMES BY PRINCIPAL OFFENCE CATEGORY

January 2009

P31-Nottinghamshire



| | Convictions | | Unsuccessful | |
|--|----------------------|---------------|----------------------|---------------|
| | Number of Defendants | % | Number of Defendants | % |
| A Homicide | 0 | 0 | 0 | 0 |
| B Offences Against The Person | 170 | 68.5% | 78 | 31.5% |
| C Sexual Offences | 8 | 100.0% | 0 | 0.0% |
| D Burglary | 44 | 81.5% | 10 | 18.5% |
| E Robbery | 23 | 62.2% | 14 | 37.8% |
| F Theft And Handling | 209 | 92.1% | 18 | 7.9% |
| G Fraud And Forgery | 7 | 77.8% | 2 | 22.2% |
| H Criminal Damage | 74 | 91.4% | 7 | 8.6% |
| I Drugs Offences | 92 | 92.0% | 8 | 8.0% |
| J Public Order Offences | 174 | 87.9% | 24 | 12.1% |
| K All Other Offences (excluding Motoring) | 55 | 87.3% | 8 | 12.7% |
| L Motoring Offences | 486 | 90.8% | 49 | 9.2% |
| Admin Finalisations | 0 | 0.0% | 17 | 100.0% |
| TOTAL | 1,342 | 85.1% | 235 | 14.9% |