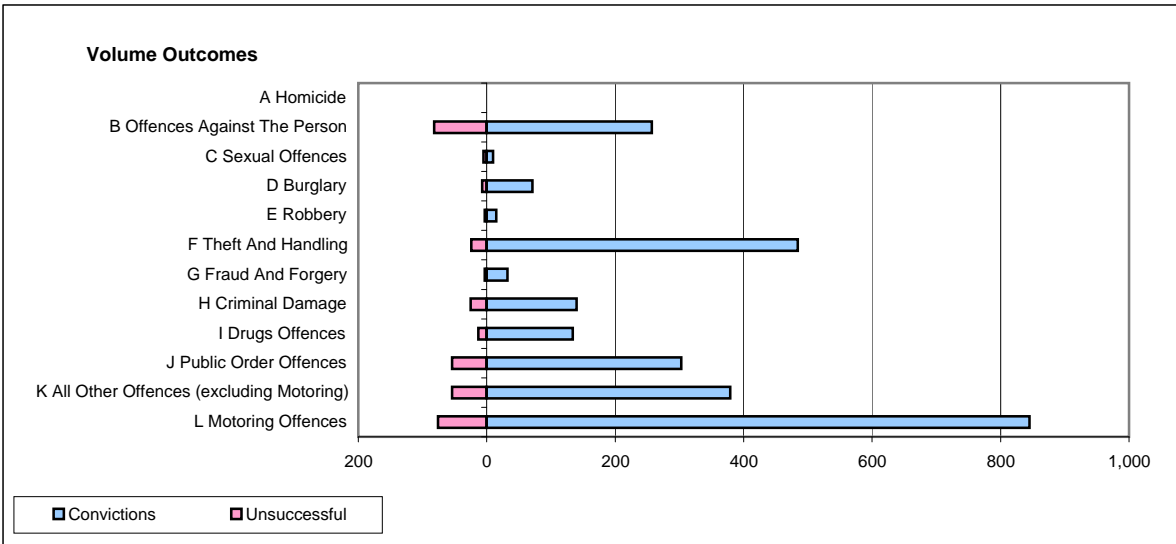
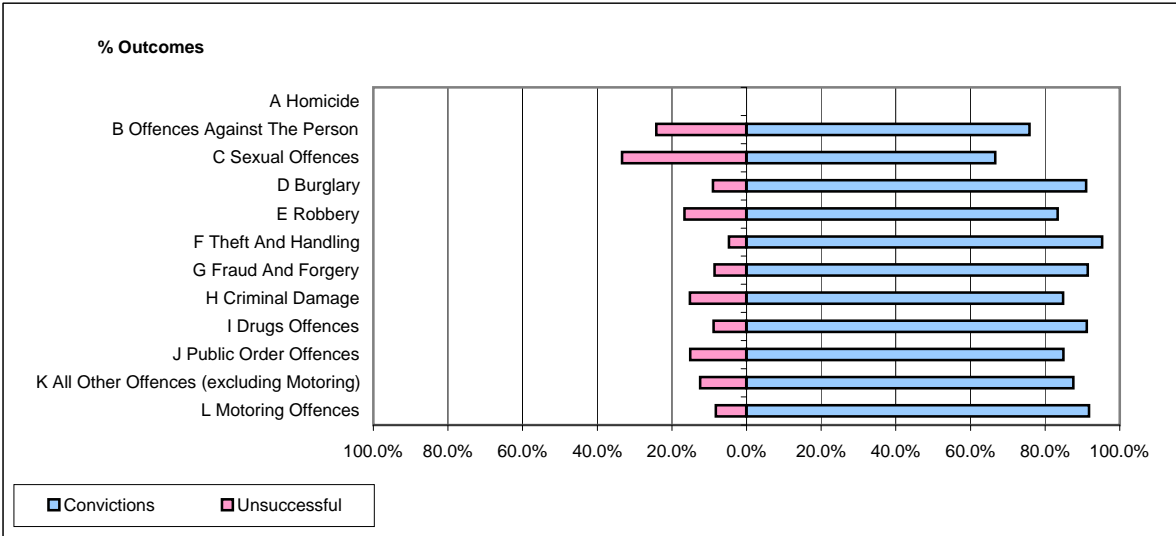


CPS OUTCOMES BY PRINCIPAL OFFENCE CATEGORY

January 2009

P28-Northumbria



	Convictions		Unsuccessful	
	Number of Defendants	%	Number of Defendants	%
A Homicide	0	0	0	0
B Offences Against The Person	257	75.8%	82	24.2%
C Sexual Offences	10	66.7%	5	33.3%
D Burglary	71	91.0%	7	9.0%
E Robbery	15	83.3%	3	16.7%
F Theft And Handling	484	95.3%	24	4.7%
G Fraud And Forgery	32	91.4%	3	8.6%
H Criminal Damage	140	84.8%	25	15.2%
I Drugs Offences	134	91.2%	13	8.8%
J Public Order Offences	303	84.9%	54	15.1%
K All Other Offences (excluding Motoring)	379	87.5%	54	12.5%
L Motoring Offences	845	91.7%	76	8.3%
Admin Finalisations	0	0.0%	23	100.0%
TOTAL	2,670	87.9%	369	12.1%