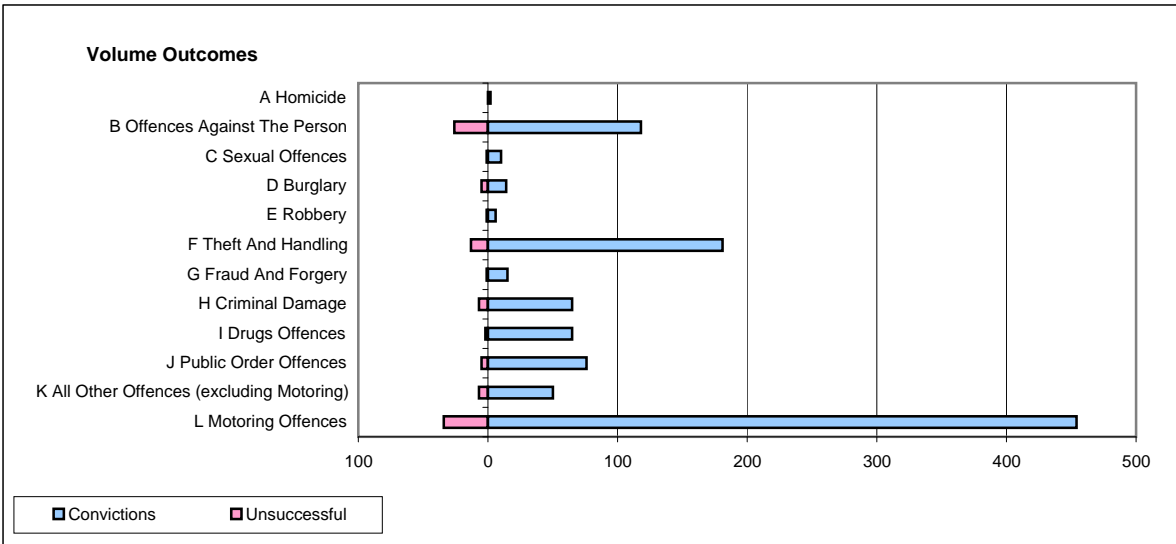
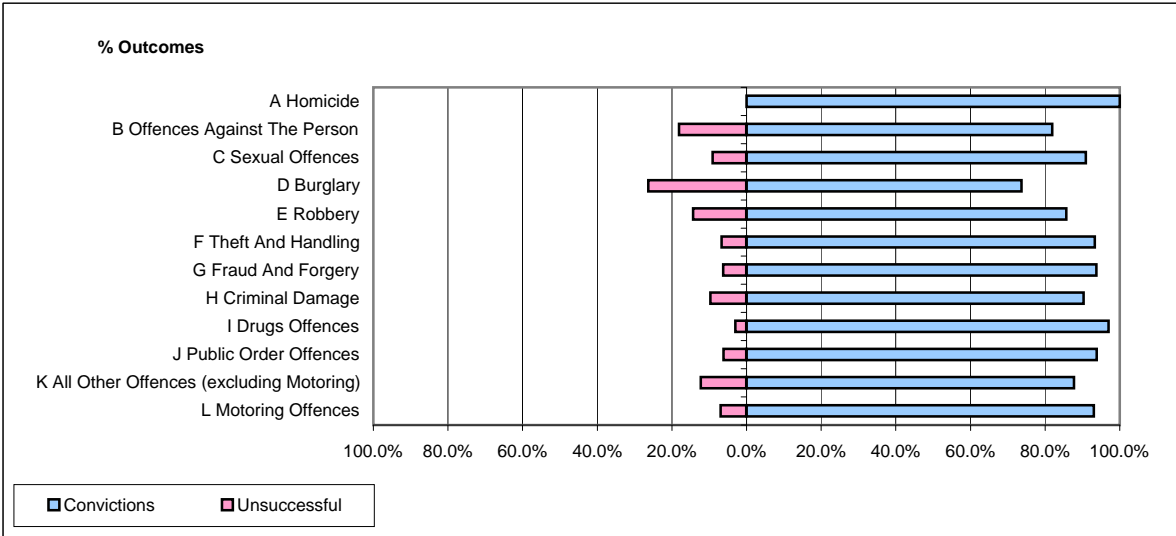


**CPS OUTCOMES BY PRINCIPAL OFFENCE CATEGORY**

January 2009

**P26-Norfolk**



	Convictions		Unsuccessful	
	Number of Defendants	%	Number of Defendants	%
<b>A Homicide</b>	<b>2</b>	<b>100.0%</b>	<b>0</b>	<b>0.0%</b>
<b>B Offences Against The Person</b>	<b>118</b>	<b>81.9%</b>	<b>26</b>	<b>18.1%</b>
<b>C Sexual Offences</b>	<b>10</b>	<b>90.9%</b>	<b>1</b>	<b>9.1%</b>
<b>D Burglary</b>	<b>14</b>	<b>73.7%</b>	<b>5</b>	<b>26.3%</b>
<b>E Robbery</b>	<b>6</b>	<b>85.7%</b>	<b>1</b>	<b>14.3%</b>
<b>F Theft And Handling</b>	<b>181</b>	<b>93.3%</b>	<b>13</b>	<b>6.7%</b>
<b>G Fraud And Forgery</b>	<b>15</b>	<b>93.8%</b>	<b>1</b>	<b>6.3%</b>
<b>H Criminal Damage</b>	<b>65</b>	<b>90.3%</b>	<b>7</b>	<b>9.7%</b>
<b>I Drugs Offences</b>	<b>65</b>	<b>97.0%</b>	<b>2</b>	<b>3.0%</b>
<b>J Public Order Offences</b>	<b>76</b>	<b>93.8%</b>	<b>5</b>	<b>6.2%</b>
<b>K All Other Offences (excluding Motoring)</b>	<b>50</b>	<b>87.7%</b>	<b>7</b>	<b>12.3%</b>
<b>L Motoring Offences</b>	<b>454</b>	<b>93.0%</b>	<b>34</b>	<b>7.0%</b>
<b>Admin Finalisations</b>	<b>0</b>	<b>0.0%</b>	<b>8</b>	<b>100.0%</b>
<b>TOTAL</b>	<b>1,056</b>	<b>90.6%</b>	<b>110</b>	<b>9.4%</b>