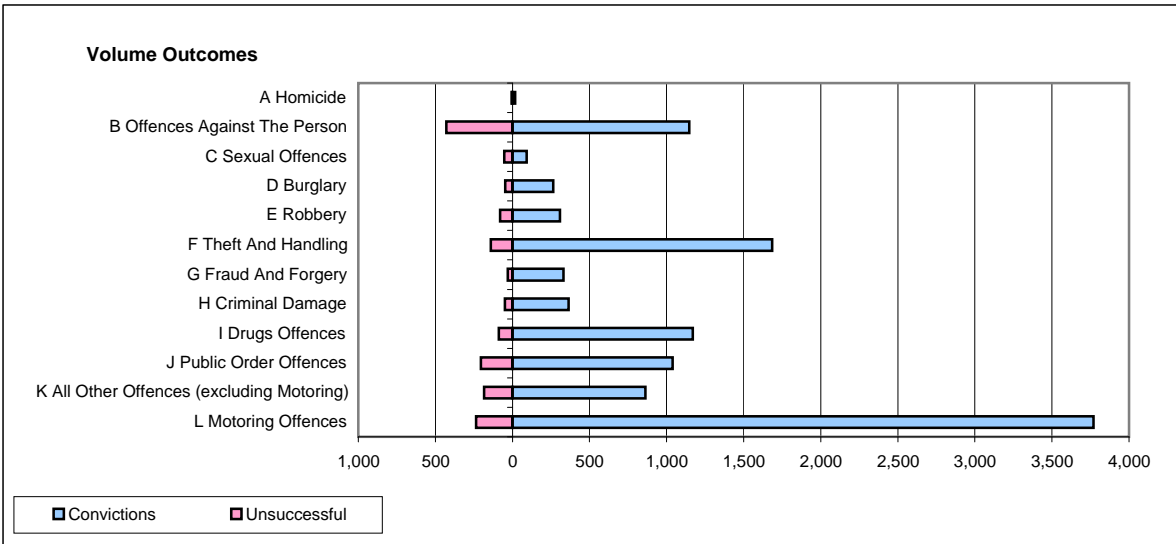
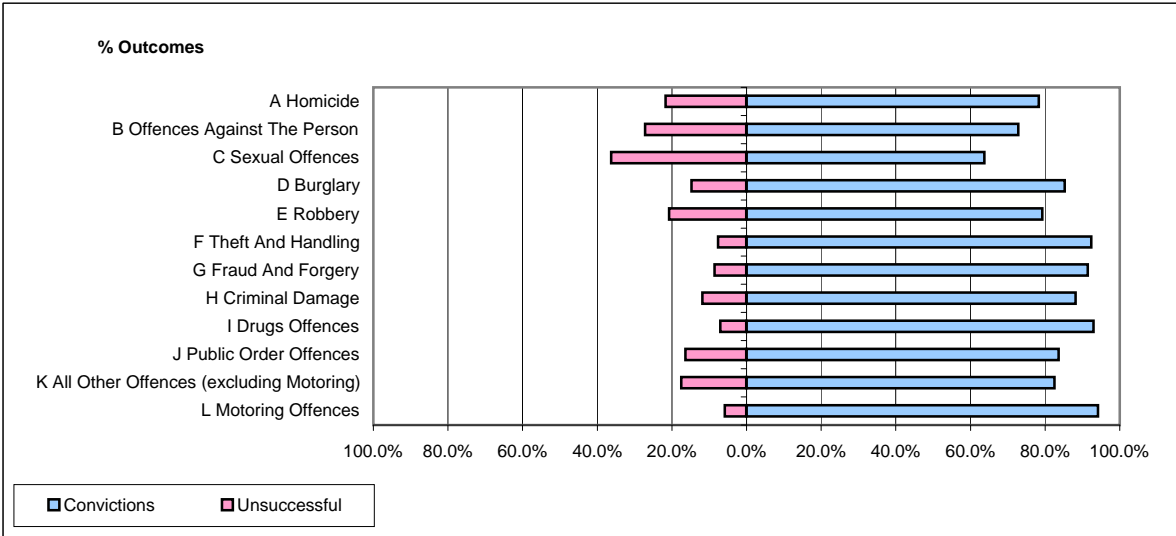


CPS OUTCOMES BY PRINCIPAL OFFENCE CATEGORY

January 2009

P25-Metropolitan&City



	Convictions		Unsuccessful	
	Number of Defendants	%	Number of Defendants	%
A Homicide	18	78.3%	5	21.7%
B Offences Against The Person	1,148	72.8%	428	27.2%
C Sexual Offences	93	63.7%	53	36.3%
D Burglary	265	85.2%	46	14.8%
E Robbery	309	79.2%	81	20.8%
F Theft And Handling	1,685	92.3%	140	7.7%
G Fraud And Forgery	332	91.5%	31	8.5%
H Criminal Damage	365	88.2%	49	11.8%
I Drugs Offences	1,170	93.0%	88	7.0%
J Public Order Offences	1,040	83.6%	204	16.4%
K All Other Offences (excluding Motoring)	863	82.5%	183	17.5%
L Motoring Offences	3,770	94.1%	235	5.9%
Admin Finalisations	0	0.0%	374	100.0%
TOTAL	11,058	85.2%	1,917	14.8%