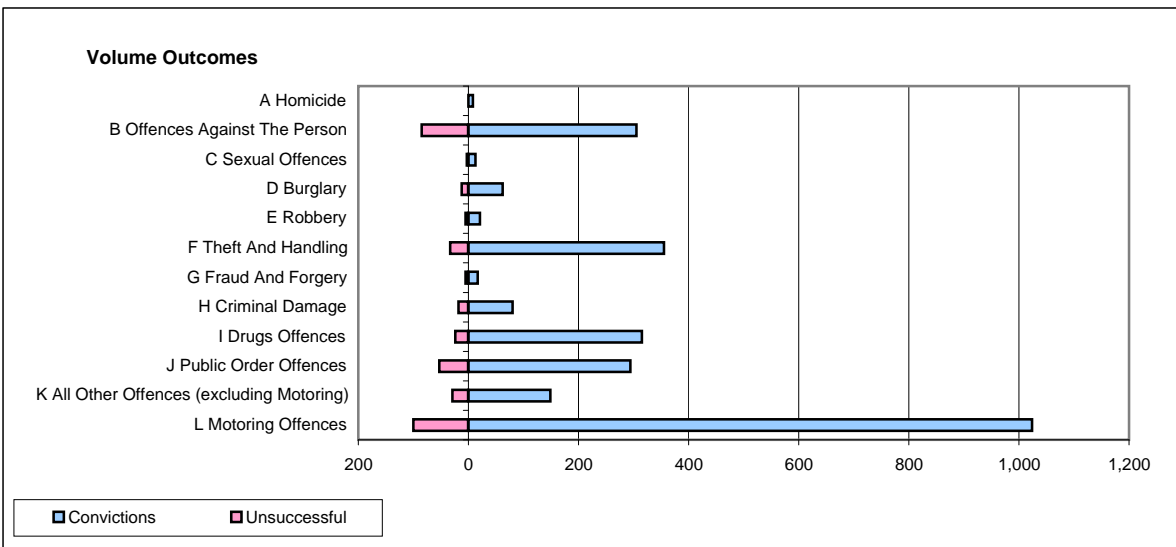
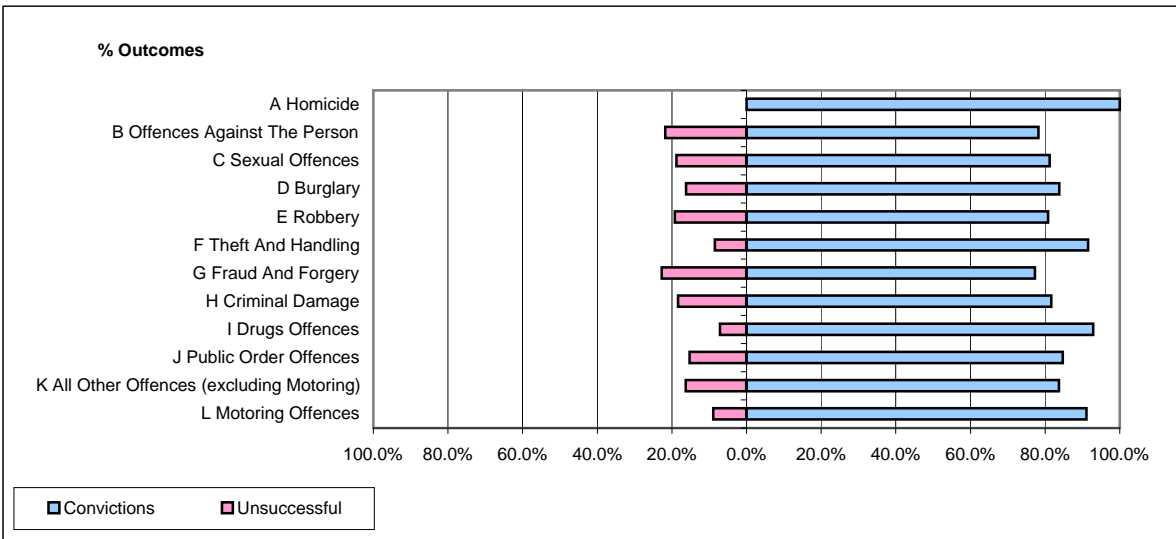


CPS OUTCOMES BY PRINCIPAL OFFENCE CATEGORY

January 2009

P24-Merseyside



	Convictions		Unsuccessful	
	Number of Defendants	%	Number of Defendants	%
A Homicide	8	100.0%	0	0.0%
B Offences Against The Person	305	78.2%	85	21.8%
C Sexual Offences	13	81.3%	3	18.8%
D Burglary	62	83.8%	12	16.2%
E Robbery	21	80.8%	5	19.2%
F Theft And Handling	355	91.5%	33	8.5%
G Fraud And Forgery	17	77.3%	5	22.7%
H Criminal Damage	80	81.6%	18	18.4%
I Drugs Offences	315	92.9%	24	7.1%
J Public Order Offences	294	84.7%	53	15.3%
K All Other Offences (excluding Motoring)	149	83.7%	29	16.3%
L Motoring Offences	1,024	91.1%	100	8.9%
Admin Finalisations	0	0.0%	36	100.0%
TOTAL	2,643	86.8%	403	13.2%