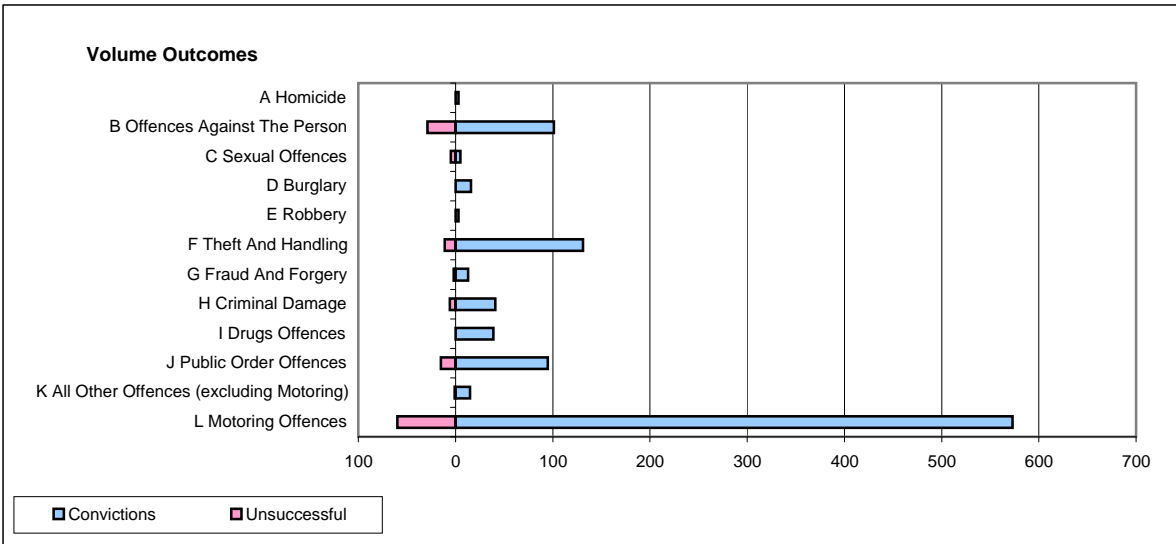
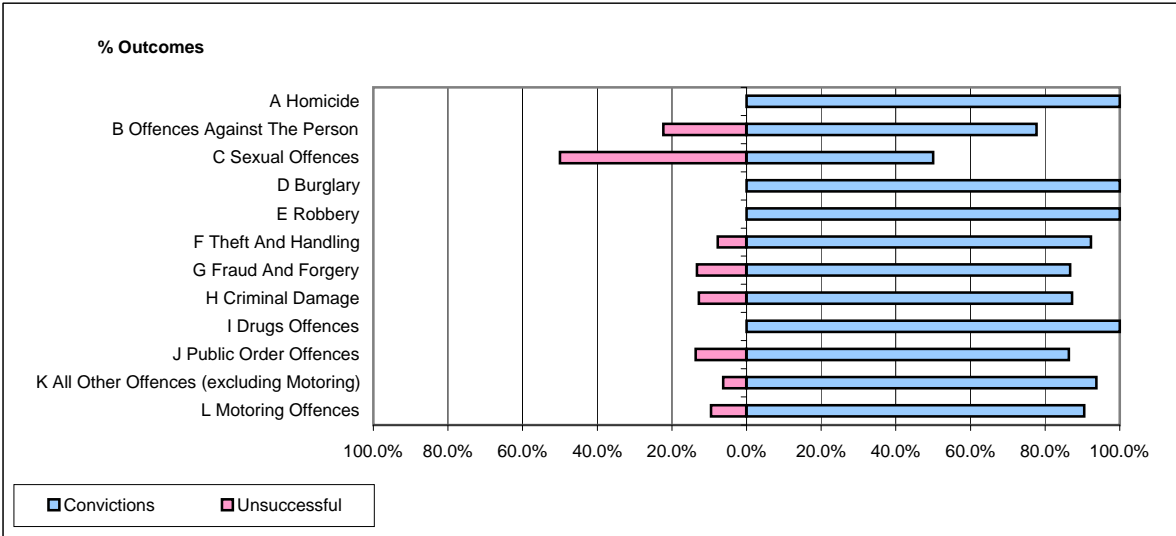


**CPS OUTCOMES BY PRINCIPAL OFFENCE CATEGORY**

January 2009

**P23-Lincolnshire**



	Convictions		Unsuccessful	
	Number of Defendants	%	Number of Defendants	%
<b>A Homicide</b>	<b>3</b>	<b>100.0%</b>	<b>0</b>	<b>0.0%</b>
<b>B Offences Against The Person</b>	<b>101</b>	<b>77.7%</b>	<b>29</b>	<b>22.3%</b>
<b>C Sexual Offences</b>	<b>5</b>	<b>50.0%</b>	<b>5</b>	<b>50.0%</b>
<b>D Burglary</b>	<b>16</b>	<b>100.0%</b>	<b>0</b>	<b>0.0%</b>
<b>E Robbery</b>	<b>3</b>	<b>100.0%</b>	<b>0</b>	<b>0.0%</b>
<b>F Theft And Handling</b>	<b>131</b>	<b>92.3%</b>	<b>11</b>	<b>7.7%</b>
<b>G Fraud And Forgery</b>	<b>13</b>	<b>86.7%</b>	<b>2</b>	<b>13.3%</b>
<b>H Criminal Damage</b>	<b>41</b>	<b>87.2%</b>	<b>6</b>	<b>12.8%</b>
<b>I Drugs Offences</b>	<b>39</b>	<b>100.0%</b>	<b>0</b>	<b>0.0%</b>
<b>J Public Order Offences</b>	<b>95</b>	<b>86.4%</b>	<b>15</b>	<b>13.6%</b>
<b>K All Other Offences (excluding Motoring)</b>	<b>15</b>	<b>93.8%</b>	<b>1</b>	<b>6.3%</b>
<b>L Motoring Offences</b>	<b>573</b>	<b>90.5%</b>	<b>60</b>	<b>9.5%</b>
<b>Admin Finalisations</b>	<b>0</b>	<b>0.0%</b>	<b>5</b>	<b>100.0%</b>
<b>TOTAL</b>	<b>1,035</b>	<b>88.5%</b>	<b>134</b>	<b>11.5%</b>