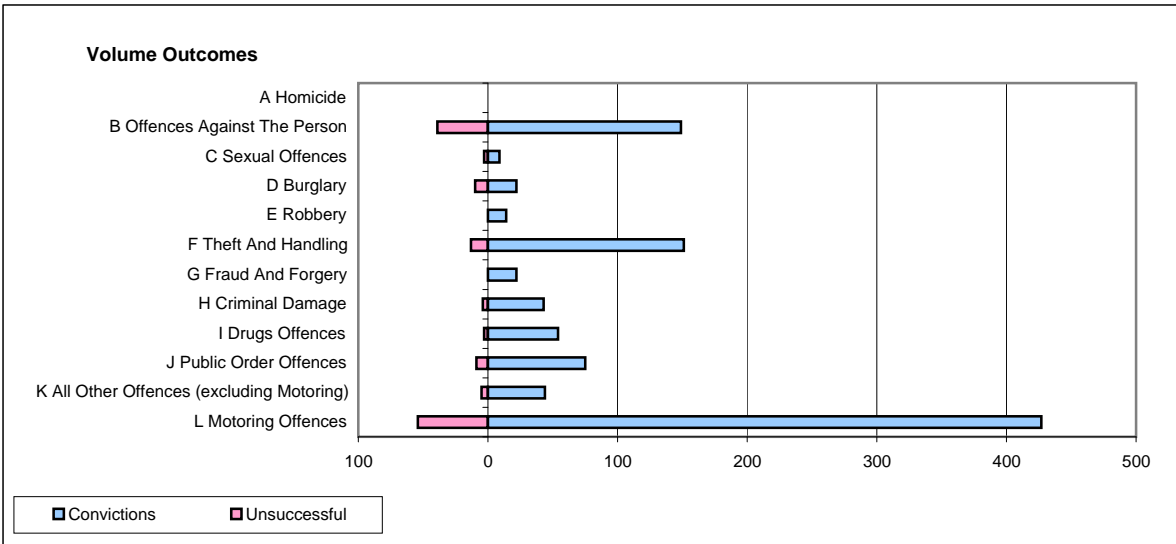
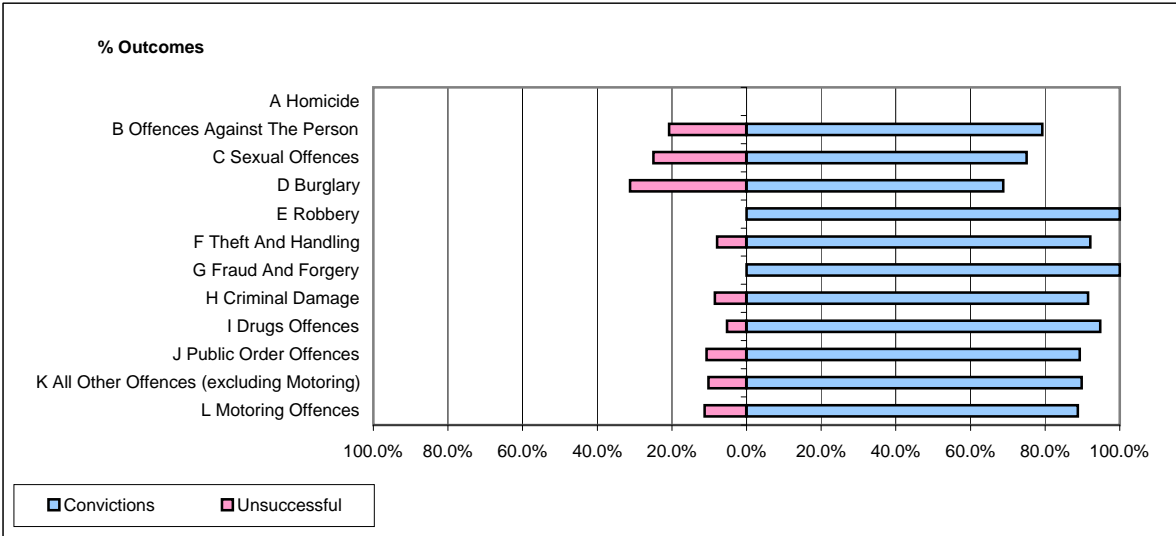


CPS OUTCOMES BY PRINCIPAL OFFENCE CATEGORY

January 2009

P22-Leicestershire



	Convictions		Unsuccessful	
	Number of Defendants	%	Number of Defendants	%
A Homicide	0	0	0	0
B Offences Against The Person	149	79.3%	39	20.7%
C Sexual Offences	9	75.0%	3	25.0%
D Burglary	22	68.8%	10	31.3%
E Robbery	14	100.0%	0	0.0%
F Theft And Handling	151	92.1%	13	7.9%
G Fraud And Forgery	22	100.0%	0	0.0%
H Criminal Damage	43	91.5%	4	8.5%
I Drugs Offences	54	94.7%	3	5.3%
J Public Order Offences	75	89.3%	9	10.7%
K All Other Offences (excluding Motoring)	44	89.8%	5	10.2%
L Motoring Offences	427	88.8%	54	11.2%
Admin Finalisations	0	0.0%	18	100.0%
TOTAL	1,010	86.5%	158	13.5%