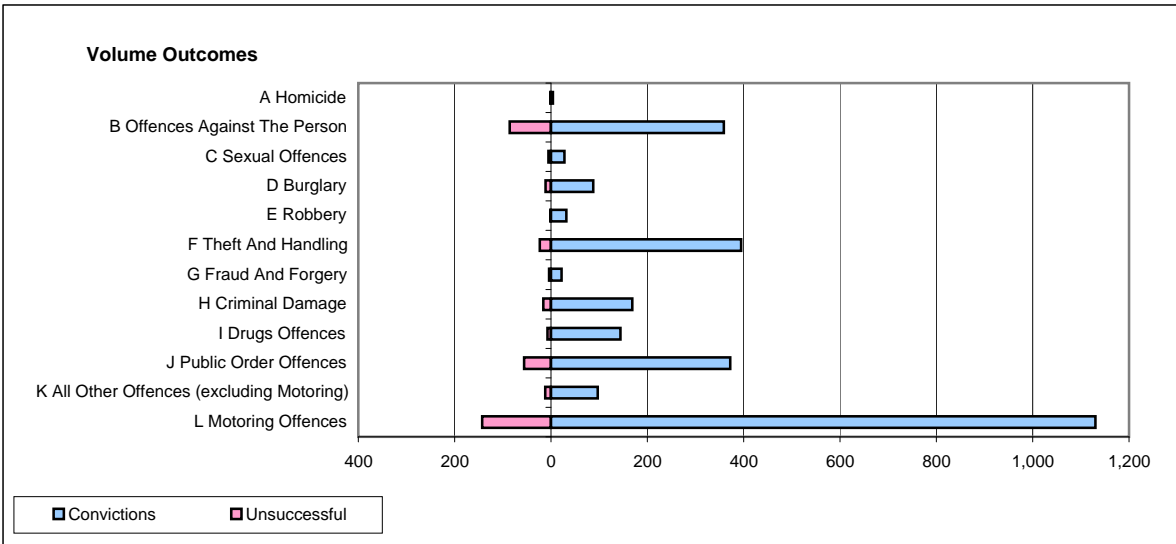
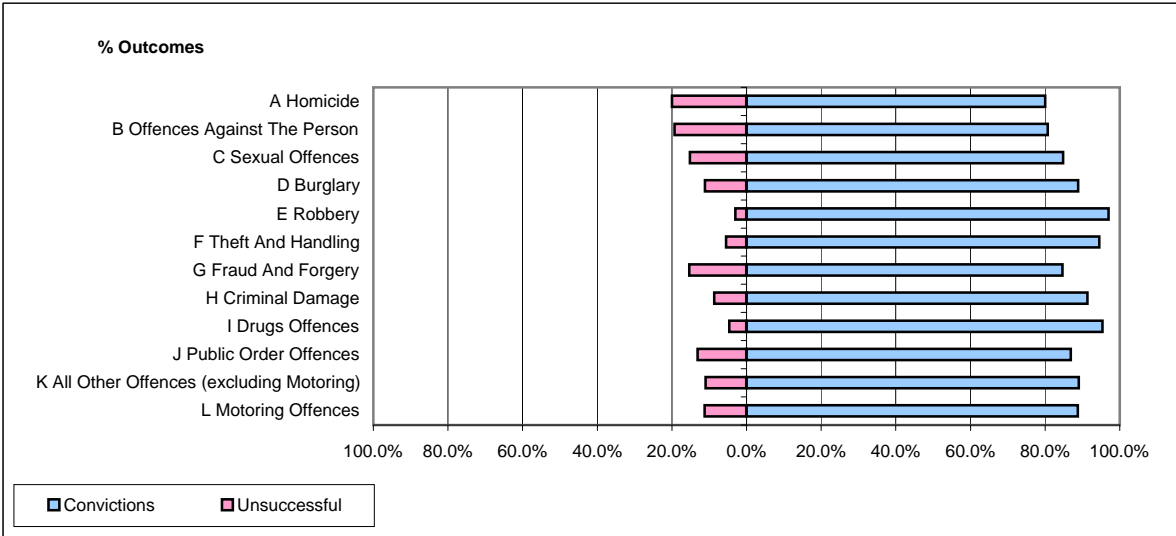


**CPS OUTCOMES BY PRINCIPAL OFFENCE CATEGORY**

**January 2009**

**P21-Lancashire**



	Convictions		Unsuccessful	
	Number of Defendants	%	Number of Defendants	%
<b>A Homicide</b>	<b>4</b>	<b>80.0%</b>	<b>1</b>	<b>20.0%</b>
<b>B Offences Against The Person</b>	<b>359</b>	<b>80.7%</b>	<b>86</b>	<b>19.3%</b>
<b>C Sexual Offences</b>	<b>28</b>	<b>84.8%</b>	<b>5</b>	<b>15.2%</b>
<b>D Burglary</b>	<b>88</b>	<b>88.9%</b>	<b>11</b>	<b>11.1%</b>
<b>E Robbery</b>	<b>32</b>	<b>97.0%</b>	<b>1</b>	<b>3.0%</b>
<b>F Theft And Handling</b>	<b>395</b>	<b>94.5%</b>	<b>23</b>	<b>5.5%</b>
<b>G Fraud And Forgery</b>	<b>22</b>	<b>84.6%</b>	<b>4</b>	<b>15.4%</b>
<b>H Criminal Damage</b>	<b>169</b>	<b>91.4%</b>	<b>16</b>	<b>8.6%</b>
<b>I Drugs Offences</b>	<b>144</b>	<b>95.4%</b>	<b>7</b>	<b>4.6%</b>
<b>J Public Order Offences</b>	<b>372</b>	<b>86.9%</b>	<b>56</b>	<b>13.1%</b>
<b>K All Other Offences (excluding Motoring)</b>	<b>97</b>	<b>89.0%</b>	<b>12</b>	<b>11.0%</b>
<b>L Motoring Offences</b>	<b>1,130</b>	<b>88.8%</b>	<b>143</b>	<b>11.2%</b>
<b>Admin Finalisations</b>	<b>0</b>	<b>0.0%</b>	<b>29</b>	<b>100.0%</b>
<b>TOTAL</b>	<b>2,840</b>	<b>87.8%</b>	<b>394</b>	<b>12.2%</b>