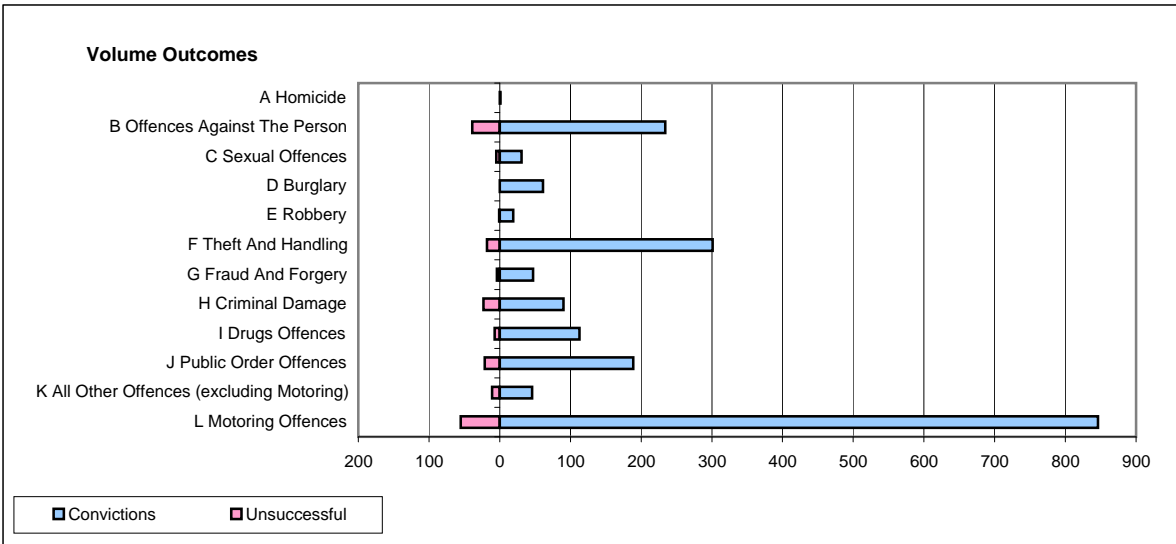
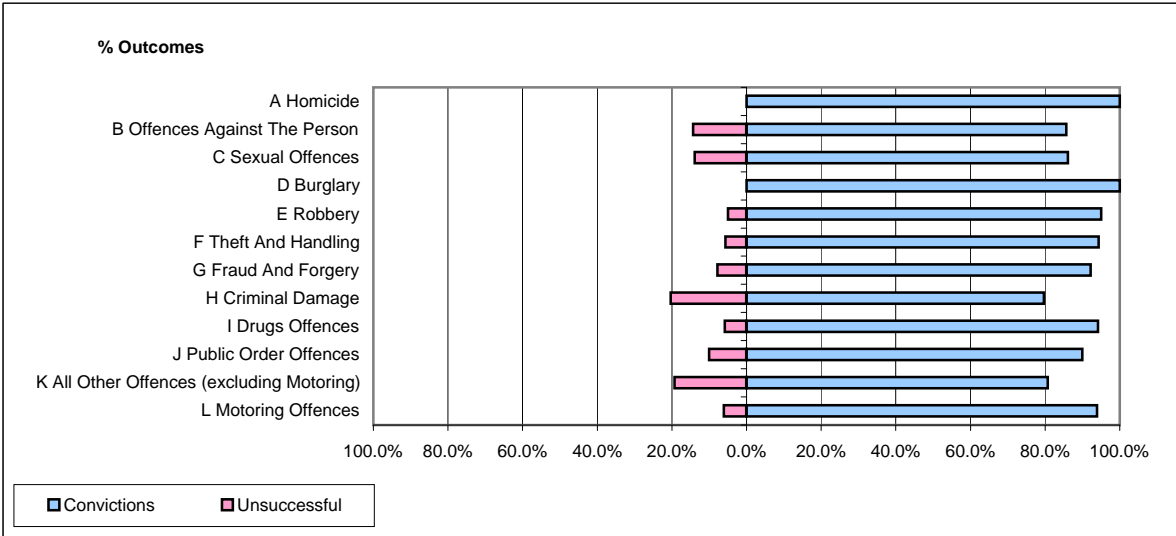


CPS OUTCOMES BY PRINCIPAL OFFENCE CATEGORY

January 2009

P20-Kent



	Convictions		Unsuccessful	
	Number of Defendants	%	Number of Defendants	%
A Homicide	1	100.0%	0	0.0%
B Offences Against The Person	234	85.7%	39	14.3%
C Sexual Offences	31	86.1%	5	13.9%
D Burglary	61	100.0%	0	0.0%
E Robbery	19	95.0%	1	5.0%
F Theft And Handling	301	94.4%	18	5.6%
G Fraud And Forgery	47	92.2%	4	7.8%
H Criminal Damage	90	79.6%	23	20.4%
I Drugs Offences	113	94.2%	7	5.8%
J Public Order Offences	189	90.0%	21	10.0%
K All Other Offences (excluding Motoring)	46	80.7%	11	19.3%
L Motoring Offences	846	93.9%	55	6.1%
Admin Finalisations	0	0.0%	27	100.0%
TOTAL	1,978	90.4%	211	9.6%