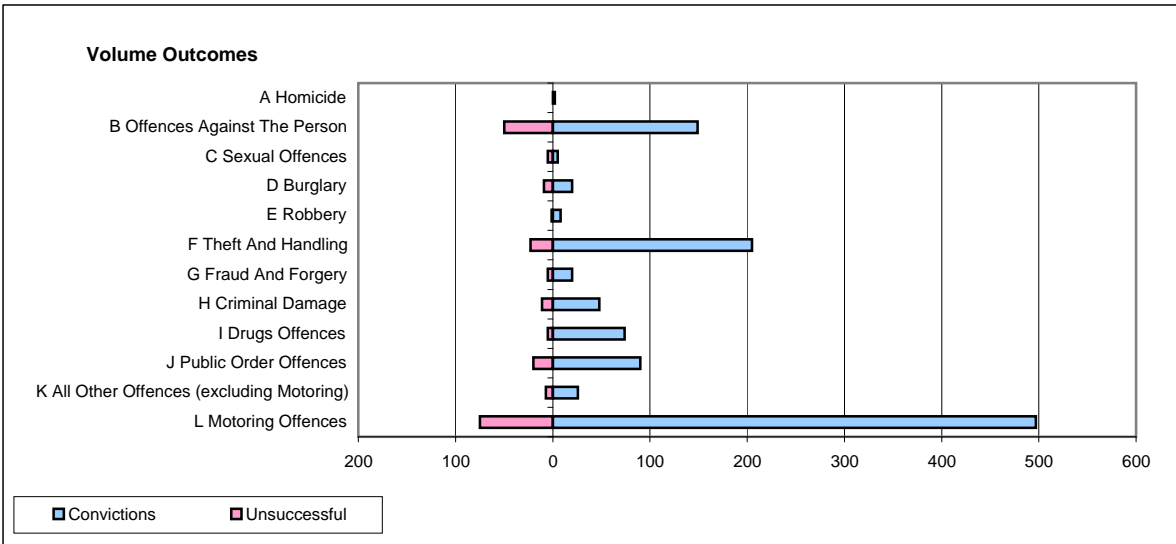
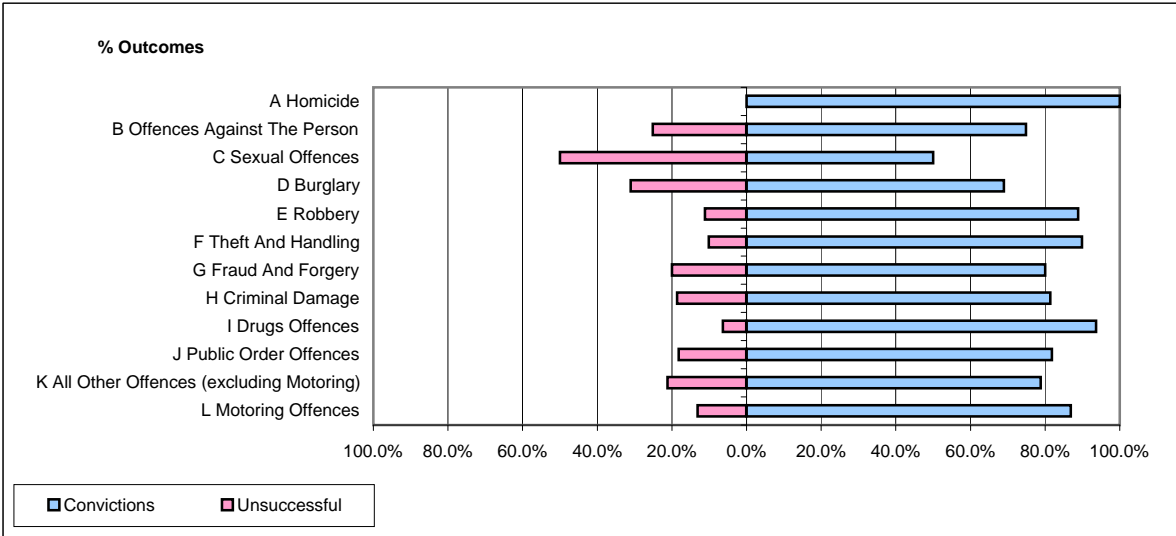


**CPS OUTCOMES BY PRINCIPAL OFFENCE CATEGORY**

January 2009

**P18-Hertfordshire**



	Convictions		Unsuccessful	
	Number of Defendants	%	Number of Defendants	%
<b>A Homicide</b>	<b>2</b>	<b>100.0%</b>	<b>0</b>	<b>0.0%</b>
<b>B Offences Against The Person</b>	<b>149</b>	<b>74.9%</b>	<b>50</b>	<b>25.1%</b>
<b>C Sexual Offences</b>	<b>5</b>	<b>50.0%</b>	<b>5</b>	<b>50.0%</b>
<b>D Burglary</b>	<b>20</b>	<b>69.0%</b>	<b>9</b>	<b>31.0%</b>
<b>E Robbery</b>	<b>8</b>	<b>88.9%</b>	<b>1</b>	<b>11.1%</b>
<b>F Theft And Handling</b>	<b>205</b>	<b>89.9%</b>	<b>23</b>	<b>10.1%</b>
<b>G Fraud And Forgery</b>	<b>20</b>	<b>80.0%</b>	<b>5</b>	<b>20.0%</b>
<b>H Criminal Damage</b>	<b>48</b>	<b>81.4%</b>	<b>11</b>	<b>18.6%</b>
<b>I Drugs Offences</b>	<b>74</b>	<b>93.7%</b>	<b>5</b>	<b>6.3%</b>
<b>J Public Order Offences</b>	<b>90</b>	<b>81.8%</b>	<b>20</b>	<b>18.2%</b>
<b>K All Other Offences (excluding Motoring)</b>	<b>26</b>	<b>78.8%</b>	<b>7</b>	<b>21.2%</b>
<b>L Motoring Offences</b>	<b>497</b>	<b>86.9%</b>	<b>75</b>	<b>13.1%</b>
<b>Admin Finalisations</b>	<b>0</b>	<b>0.0%</b>	<b>37</b>	<b>100.0%</b>
<b>TOTAL</b>	<b>1,144</b>	<b>82.2%</b>	<b>248</b>	<b>17.8%</b>