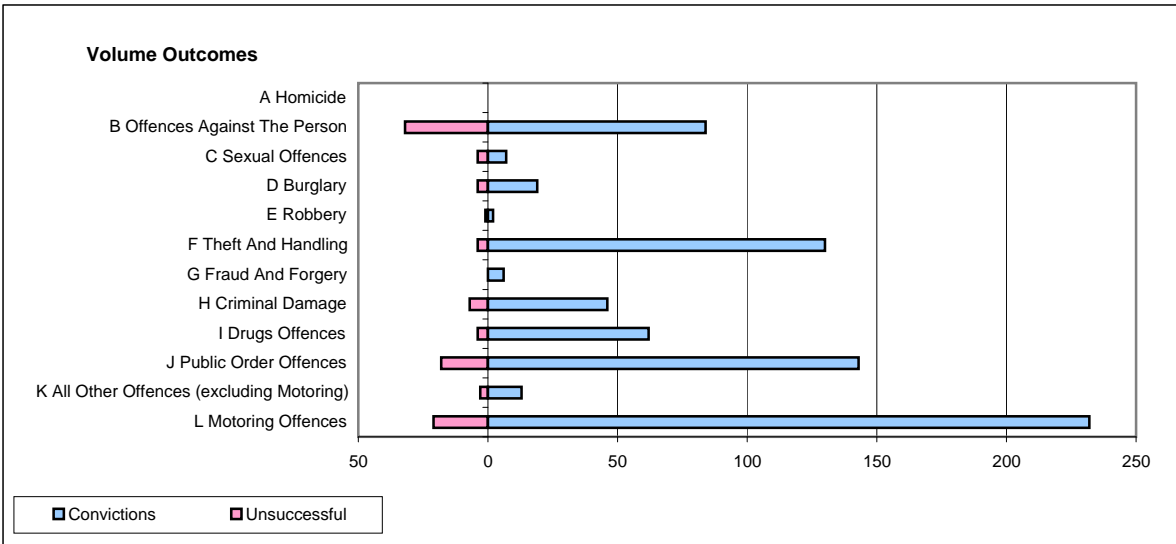
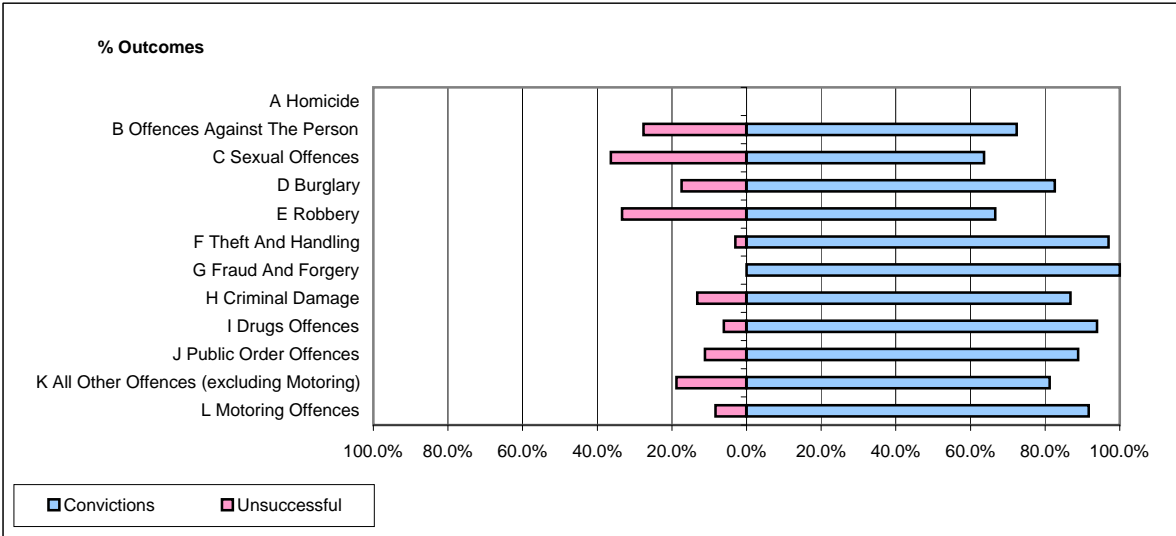


CPS OUTCOMES BY PRINCIPAL OFFENCE CATEGORY

January 2009

P16-Gwent



	Convictions		Unsuccessful	
	Number of Defendants	%	Number of Defendants	%
A Homicide	0	0	0	0
B Offences Against The Person	84	72.4%	32	27.6%
C Sexual Offences	7	63.6%	4	36.4%
D Burglary	19	82.6%	4	17.4%
E Robbery	2	66.7%	1	33.3%
F Theft And Handling	130	97.0%	4	3.0%
G Fraud And Forgery	6	100.0%	0	0.0%
H Criminal Damage	46	86.8%	7	13.2%
I Drugs Offences	62	93.9%	4	6.1%
J Public Order Offences	143	88.8%	18	11.2%
K All Other Offences (excluding Motoring)	13	81.3%	3	18.8%
L Motoring Offences	232	91.7%	21	8.3%
Admin Finalisations	0	0.0%	3	100.0%
TOTAL	744	88.0%	101	12.0%