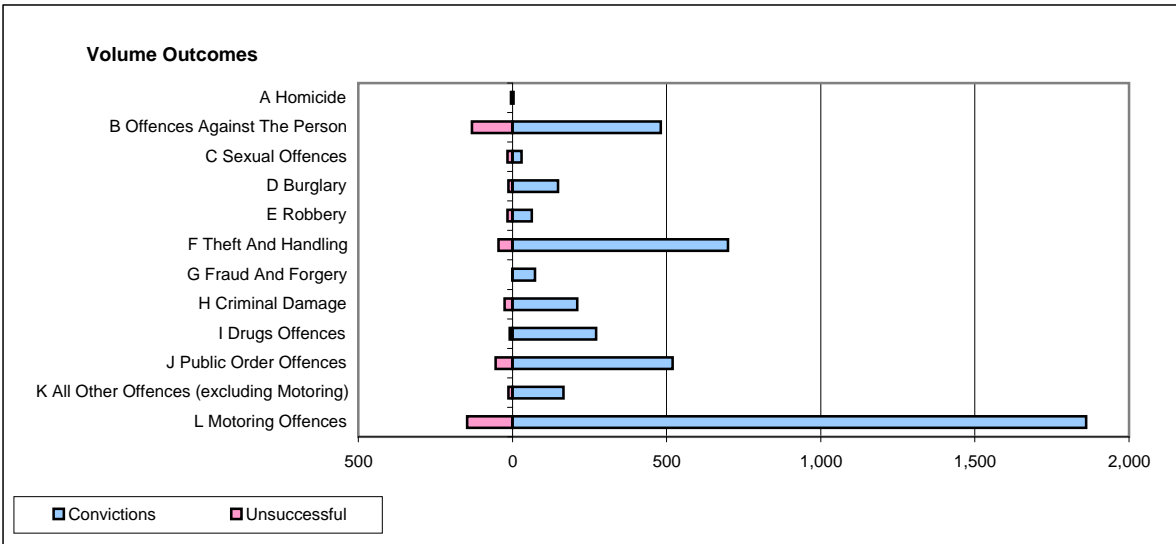
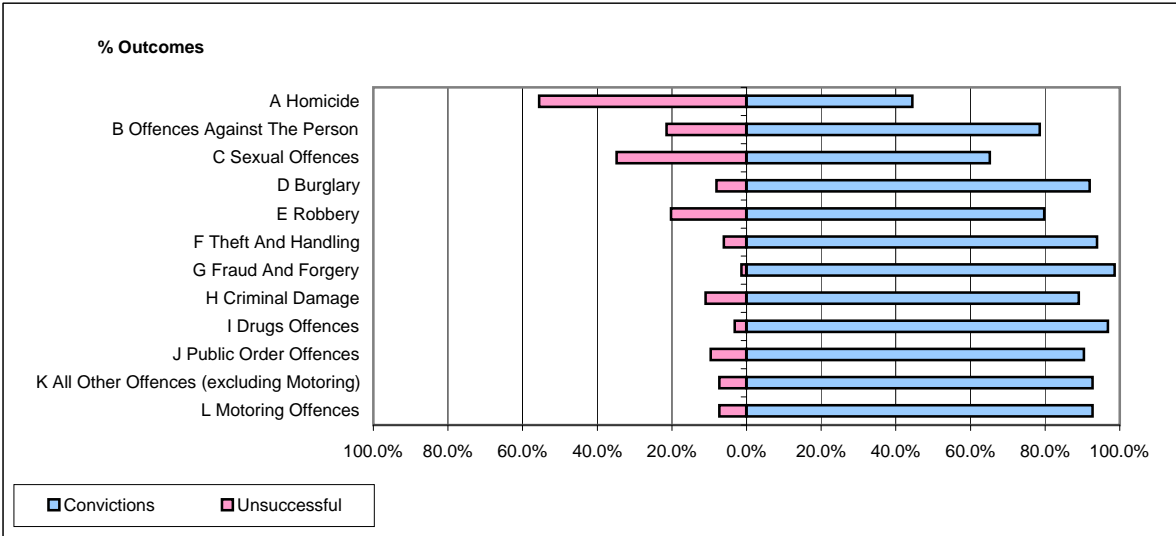


CPS OUTCOMES BY PRINCIPAL OFFENCE CATEGORY

January 2009

P15-GreaterManchester



	Convictions		Unsuccessful	
	Number of Defendants	%	Number of Defendants	%
A Homicide	4	44.4%	5	55.6%
B Offences Against The Person	481	78.6%	131	21.4%
C Sexual Offences	30	65.2%	16	34.8%
D Burglary	148	91.9%	13	8.1%
E Robbery	63	79.7%	16	20.3%
F Theft And Handling	699	94.0%	45	6.0%
G Fraud And Forgery	73	98.6%	1	1.4%
H Criminal Damage	210	89.0%	26	11.0%
I Drugs Offences	271	96.8%	9	3.2%
J Public Order Offences	520	90.4%	55	9.6%
K All Other Offences (excluding Motoring)	166	92.7%	13	7.3%
L Motoring Offences	1,861	92.7%	147	7.3%
Admin Finalisations	0	0.0%	67	100.0%
TOTAL	4,526	89.3%	544	10.7%