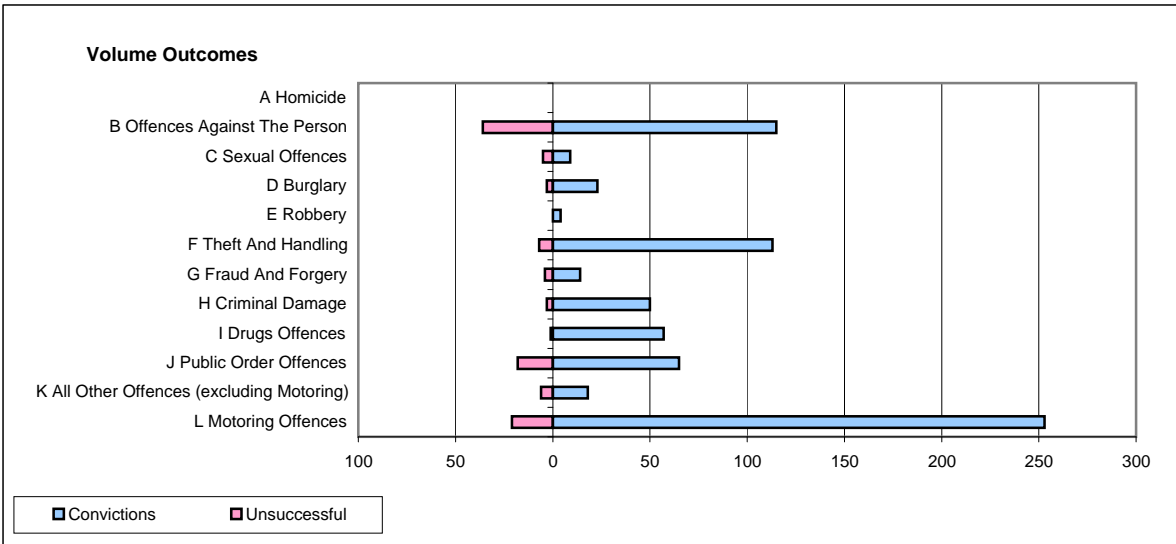
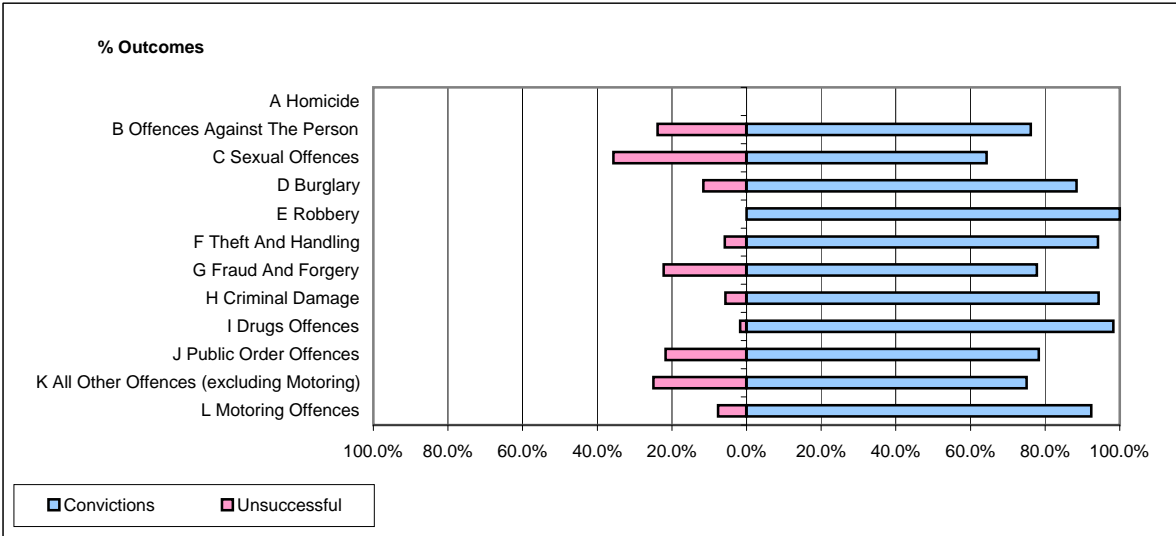


**CPS OUTCOMES BY PRINCIPAL OFFENCE CATEGORY**

January 2009

**P14-Gloucestershire**



	Convictions		Unsuccessful	
	Number of Defendants	%	Number of Defendants	%
<b>A Homicide</b>	<b>0</b>	<b>0</b>	<b>0</b>	<b>0</b>
<b>B Offences Against The Person</b>	<b>115</b>	<b>76.2%</b>	<b>36</b>	<b>23.8%</b>
<b>C Sexual Offences</b>	<b>9</b>	<b>64.3%</b>	<b>5</b>	<b>35.7%</b>
<b>D Burglary</b>	<b>23</b>	<b>88.5%</b>	<b>3</b>	<b>11.5%</b>
<b>E Robbery</b>	<b>4</b>	<b>100.0%</b>	<b>0</b>	<b>0.0%</b>
<b>F Theft And Handling</b>	<b>113</b>	<b>94.2%</b>	<b>7</b>	<b>5.8%</b>
<b>G Fraud And Forgery</b>	<b>14</b>	<b>77.8%</b>	<b>4</b>	<b>22.2%</b>
<b>H Criminal Damage</b>	<b>50</b>	<b>94.3%</b>	<b>3</b>	<b>5.7%</b>
<b>I Drugs Offences</b>	<b>57</b>	<b>98.3%</b>	<b>1</b>	<b>1.7%</b>
<b>J Public Order Offences</b>	<b>65</b>	<b>78.3%</b>	<b>18</b>	<b>21.7%</b>
<b>K All Other Offences (excluding Motoring)</b>	<b>18</b>	<b>75.0%</b>	<b>6</b>	<b>25.0%</b>
<b>L Motoring Offences</b>	<b>253</b>	<b>92.3%</b>	<b>21</b>	<b>7.7%</b>
<b>Admin Finalisations</b>	<b>0</b>	<b>0.0%</b>	<b>25</b>	<b>100.0%</b>
<b>TOTAL</b>	<b>721</b>	<b>84.8%</b>	<b>129</b>	<b>15.2%</b>