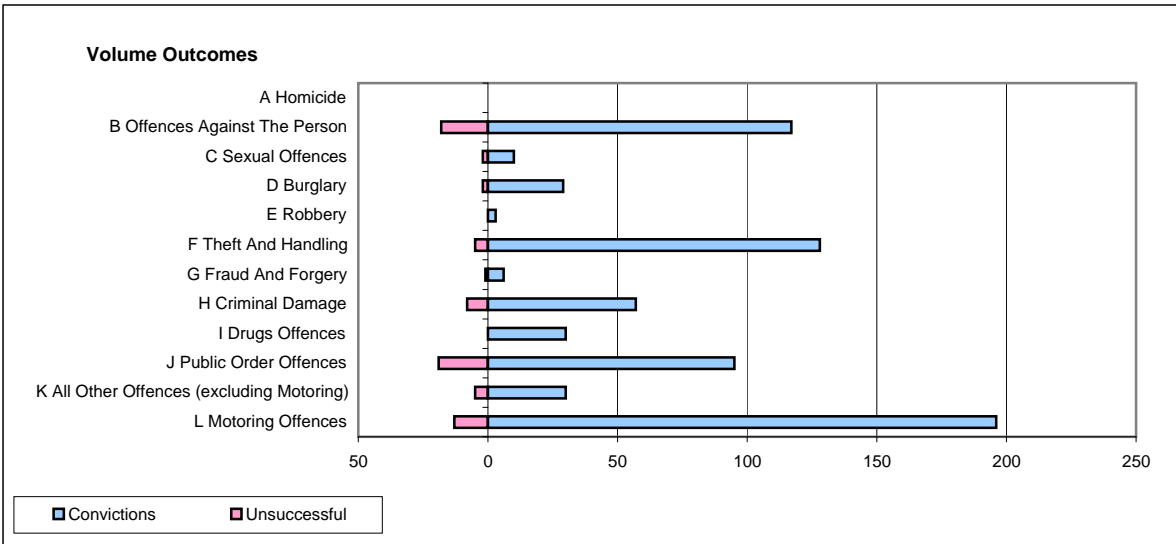
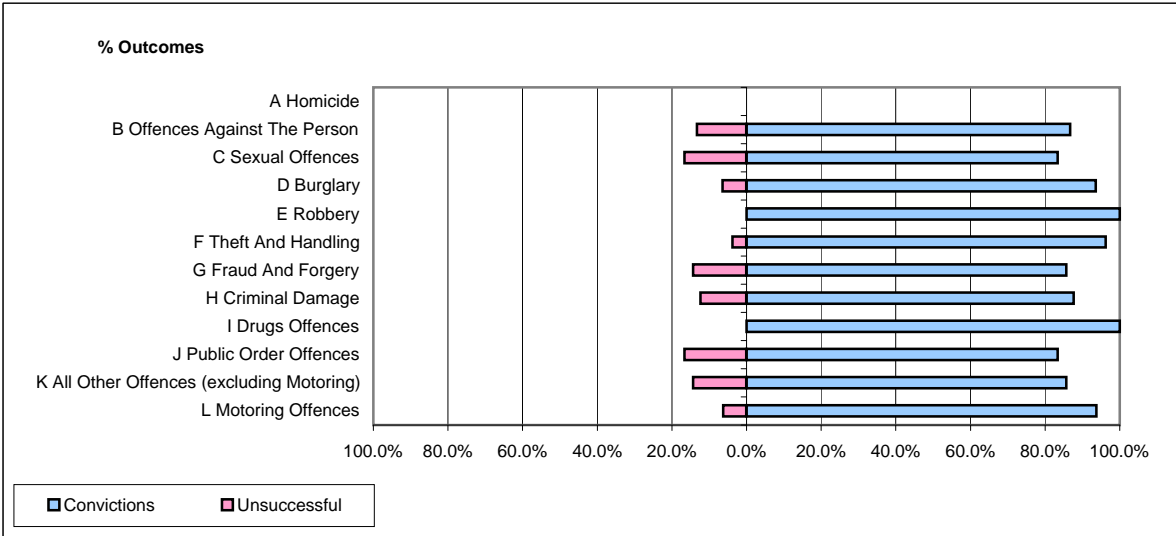


CPS OUTCOMES BY PRINCIPAL OFFENCE CATEGORY

January 2009

P11-Durham



	Convictions		Unsuccessful	
	Number of Defendants	%	Number of Defendants	%
A Homicide	0	0	0	0
B Offences Against The Person	117	86.7%	18	13.3%
C Sexual Offences	10	83.3%	2	16.7%
D Burglary	29	93.5%	2	6.5%
E Robbery	3	100.0%	0	0.0%
F Theft And Handling	128	96.2%	5	3.8%
G Fraud And Forgery	6	85.7%	1	14.3%
H Criminal Damage	57	87.7%	8	12.3%
I Drugs Offences	30	100.0%	0	0.0%
J Public Order Offences	95	83.3%	19	16.7%
K All Other Offences (excluding Motoring)	30	85.7%	5	14.3%
L Motoring Offences	196	93.8%	13	6.2%
Admin Finalisations	0	0.0%	8	100.0%
TOTAL	701	89.6%	81	10.4%