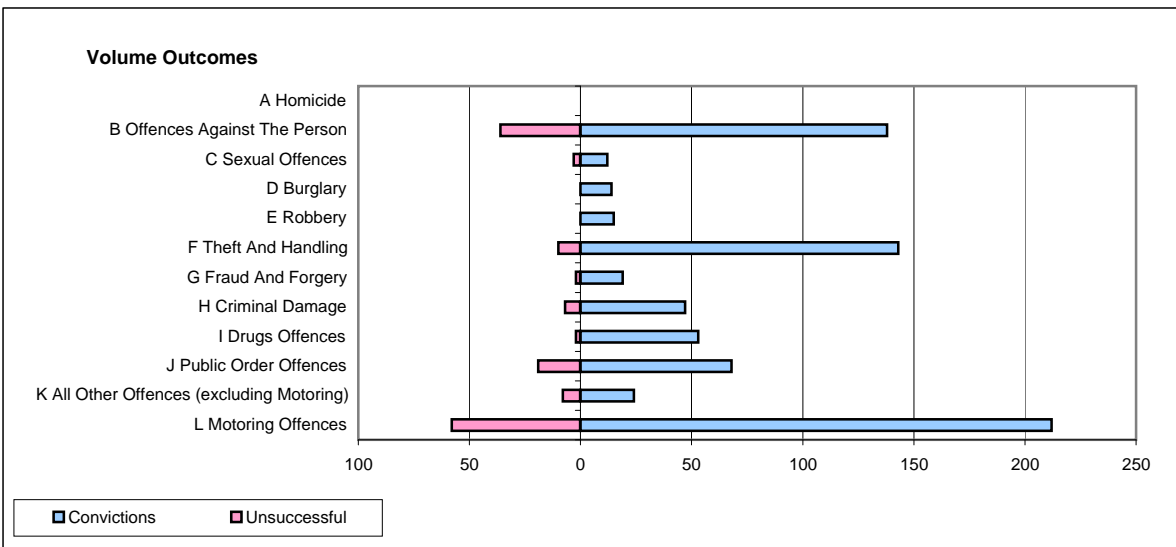
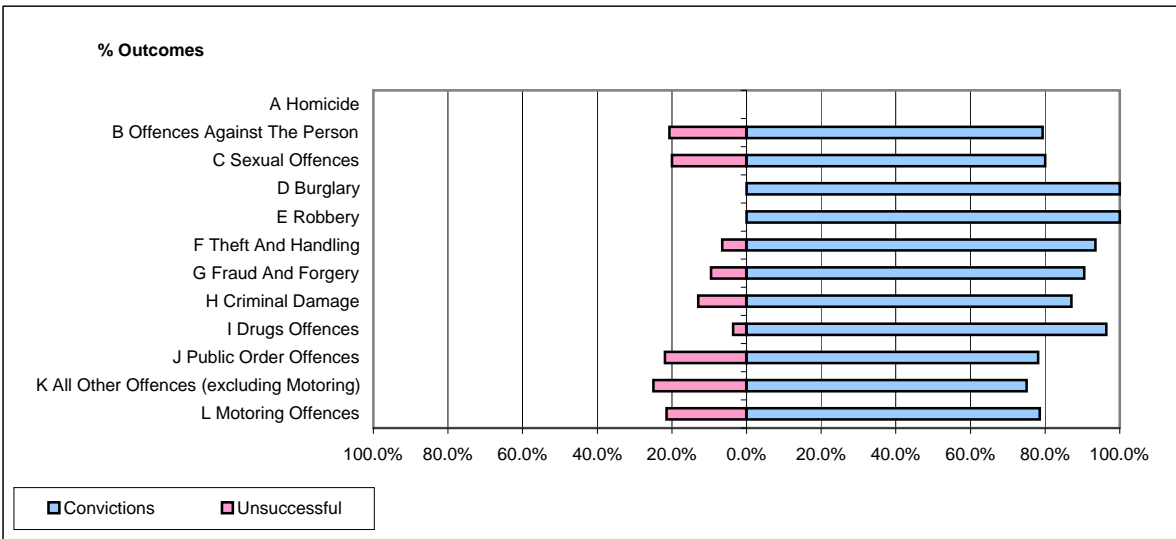


CPS OUTCOMES BY PRINCIPAL OFFENCE CATEGORY

January 2009

P10-Dorset



	Convictions		Unsuccessful	
	Number of Defendants	%	Number of Defendants	%
A Homicide	0	0	0	0
B Offences Against The Person	138	79.3%	36	20.7%
C Sexual Offences	12	80.0%	3	20.0%
D Burglary	14	100.0%	0	0.0%
E Robbery	15	100.0%	0	0.0%
F Theft And Handling	143	93.5%	10	6.5%
G Fraud And Forgery	19	90.5%	2	9.5%
H Criminal Damage	47	87.0%	7	13.0%
I Drugs Offences	53	96.4%	2	3.6%
J Public Order Offences	68	78.2%	19	21.8%
K All Other Offences (excluding Motoring)	24	75.0%	8	25.0%
L Motoring Offences	212	78.5%	58	21.5%
Admin Finalisations	0	0.0%	28	100.0%
TOTAL	745	81.2%	173	18.8%