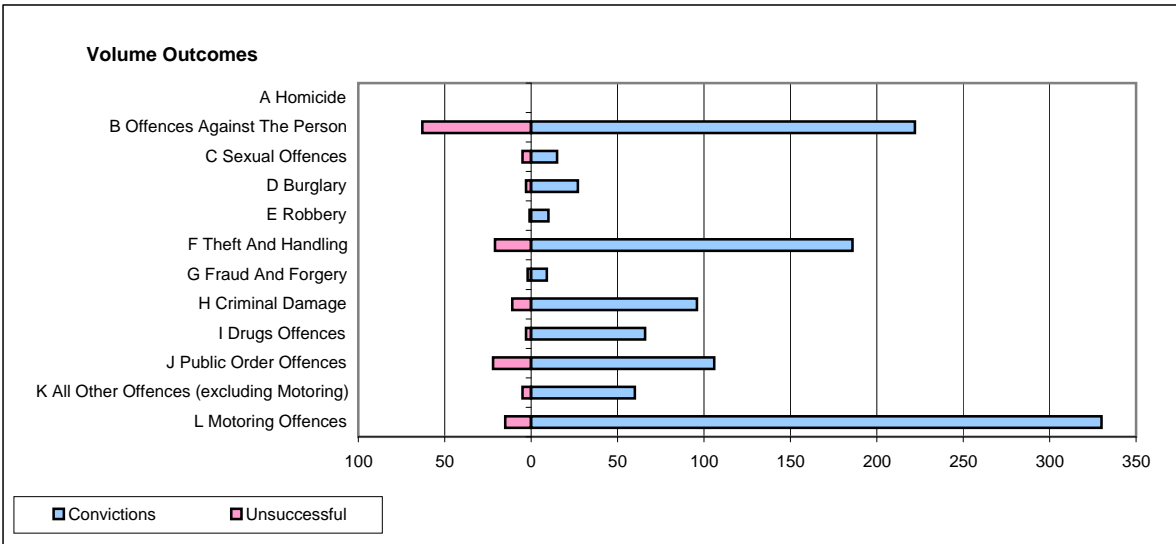
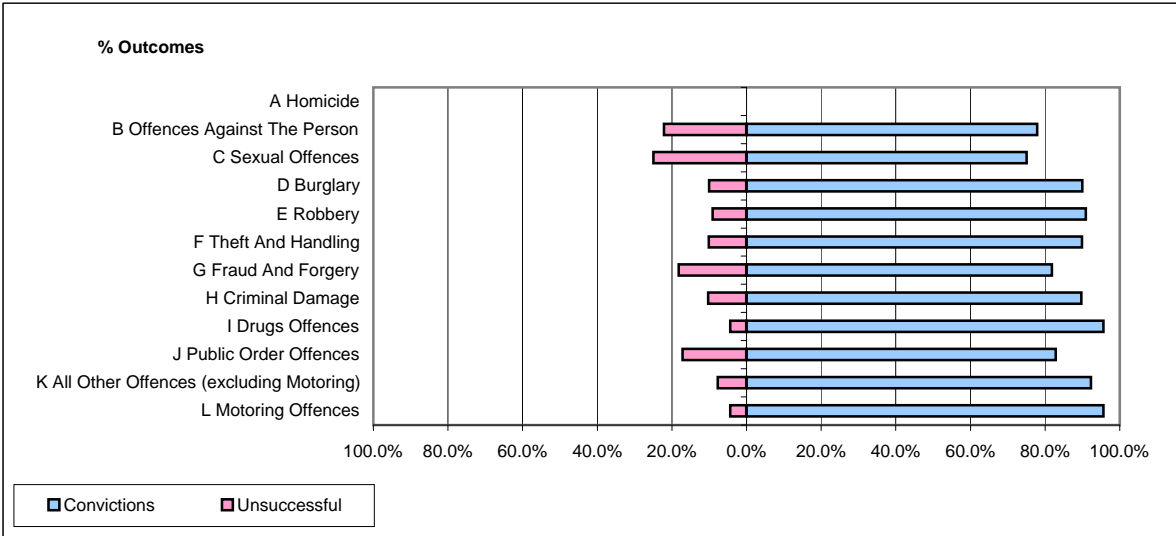


**CPS OUTCOMES BY PRINCIPAL OFFENCE CATEGORY**

**January 2009**

**P08-Derbyshire**



	Convictions		Unsuccessful	
	Number of Defendants	%	Number of Defendants	%
<b>A Homicide</b>	<b>0</b>	<b>0</b>	<b>0</b>	<b>0</b>
<b>B Offences Against The Person</b>	<b>222</b>	<b>77.9%</b>	<b>63</b>	<b>22.1%</b>
<b>C Sexual Offences</b>	<b>15</b>	<b>75.0%</b>	<b>5</b>	<b>25.0%</b>
<b>D Burglary</b>	<b>27</b>	<b>90.0%</b>	<b>3</b>	<b>10.0%</b>
<b>E Robbery</b>	<b>10</b>	<b>90.9%</b>	<b>1</b>	<b>9.1%</b>
<b>F Theft And Handling</b>	<b>186</b>	<b>89.9%</b>	<b>21</b>	<b>10.1%</b>
<b>G Fraud And Forgery</b>	<b>9</b>	<b>81.8%</b>	<b>2</b>	<b>18.2%</b>
<b>H Criminal Damage</b>	<b>96</b>	<b>89.7%</b>	<b>11</b>	<b>10.3%</b>
<b>I Drugs Offences</b>	<b>66</b>	<b>95.7%</b>	<b>3</b>	<b>4.3%</b>
<b>J Public Order Offences</b>	<b>106</b>	<b>82.8%</b>	<b>22</b>	<b>17.2%</b>
<b>K All Other Offences (excluding Motoring)</b>	<b>60</b>	<b>92.3%</b>	<b>5</b>	<b>7.7%</b>
<b>L Motoring Offences</b>	<b>330</b>	<b>95.7%</b>	<b>15</b>	<b>4.3%</b>
<b>Admin Finalisations</b>	<b>0</b>	<b>0.0%</b>	<b>8</b>	<b>100.0%</b>
<b>TOTAL</b>	<b>1,127</b>	<b>87.6%</b>	<b>159</b>	<b>12.4%</b>