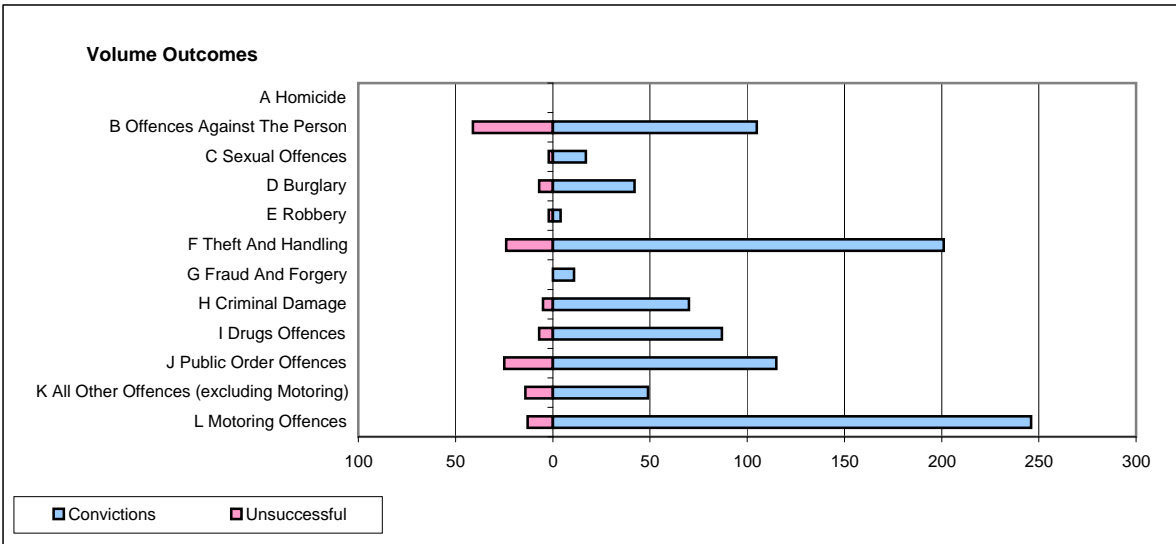
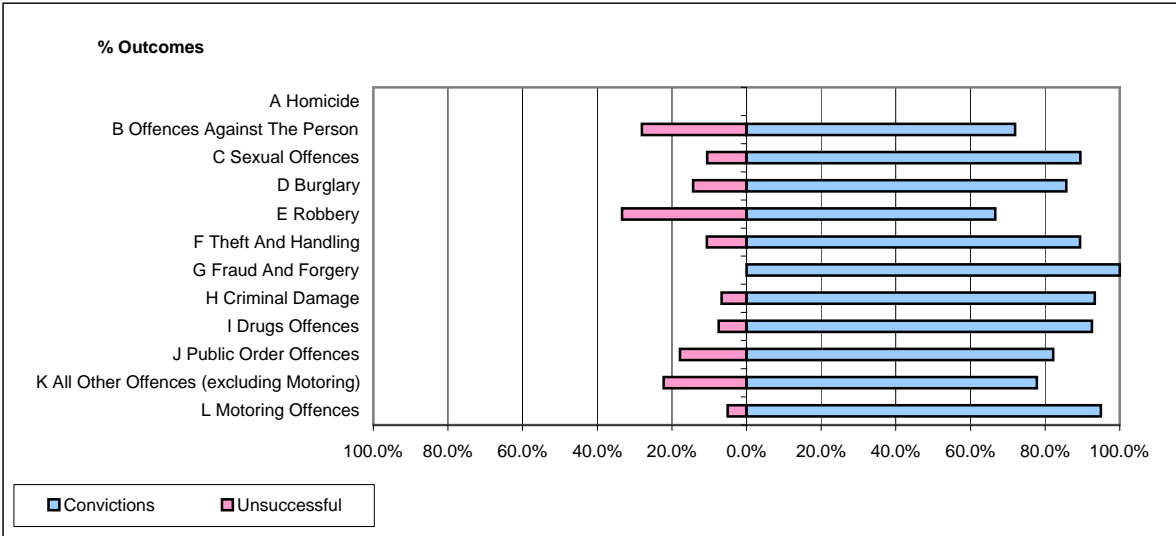


**CPS OUTCOMES BY PRINCIPAL OFFENCE CATEGORY**

**January 2009**

**P06-Cleveland**



	Convictions		Unsuccessful	
	Number of Defendants	%	Number of Defendants	%
<b>A Homicide</b>	<b>0</b>	<b>0</b>	<b>0</b>	<b>0</b>
<b>B Offences Against The Person</b>	<b>105</b>	<b>71.9%</b>	<b>41</b>	<b>28.1%</b>
<b>C Sexual Offences</b>	<b>17</b>	<b>89.5%</b>	<b>2</b>	<b>10.5%</b>
<b>D Burglary</b>	<b>42</b>	<b>85.7%</b>	<b>7</b>	<b>14.3%</b>
<b>E Robbery</b>	<b>4</b>	<b>66.7%</b>	<b>2</b>	<b>33.3%</b>
<b>F Theft And Handling</b>	<b>201</b>	<b>89.3%</b>	<b>24</b>	<b>10.7%</b>
<b>G Fraud And Forgery</b>	<b>11</b>	<b>100.0%</b>	<b>0</b>	<b>0.0%</b>
<b>H Criminal Damage</b>	<b>70</b>	<b>93.3%</b>	<b>5</b>	<b>6.7%</b>
<b>I Drugs Offences</b>	<b>87</b>	<b>92.6%</b>	<b>7</b>	<b>7.4%</b>
<b>J Public Order Offences</b>	<b>115</b>	<b>82.1%</b>	<b>25</b>	<b>17.9%</b>
<b>K All Other Offences (excluding Motoring)</b>	<b>49</b>	<b>77.8%</b>	<b>14</b>	<b>22.2%</b>
<b>L Motoring Offences</b>	<b>246</b>	<b>95.0%</b>	<b>13</b>	<b>5.0%</b>
<b>Admin Finalisations</b>	<b>0</b>	<b>0.0%</b>	<b>4</b>	<b>100.0%</b>
<b>TOTAL</b>	<b>947</b>	<b>86.8%</b>	<b>144</b>	<b>13.2%</b>