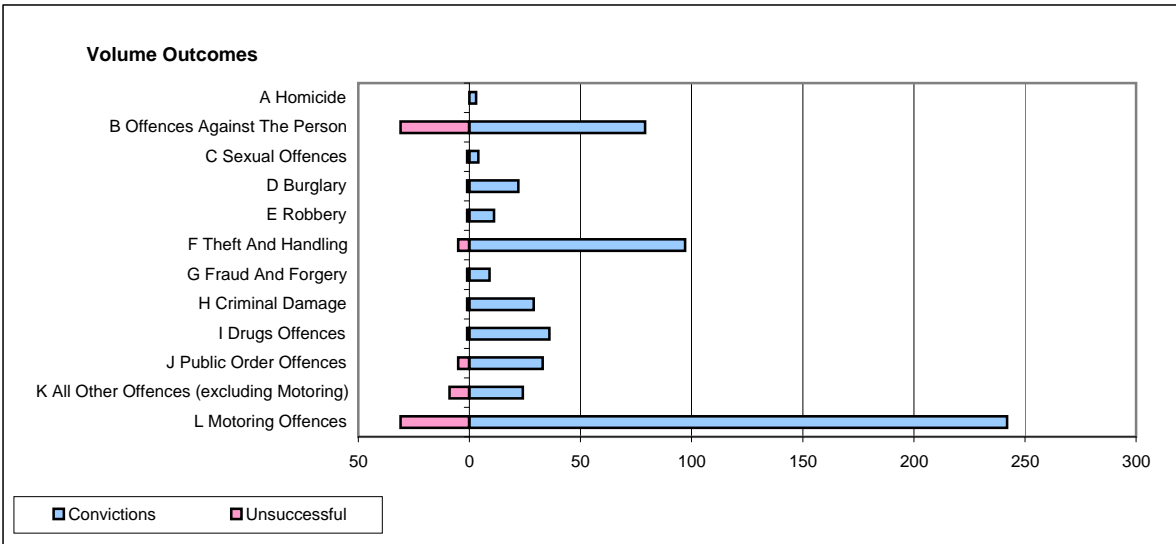
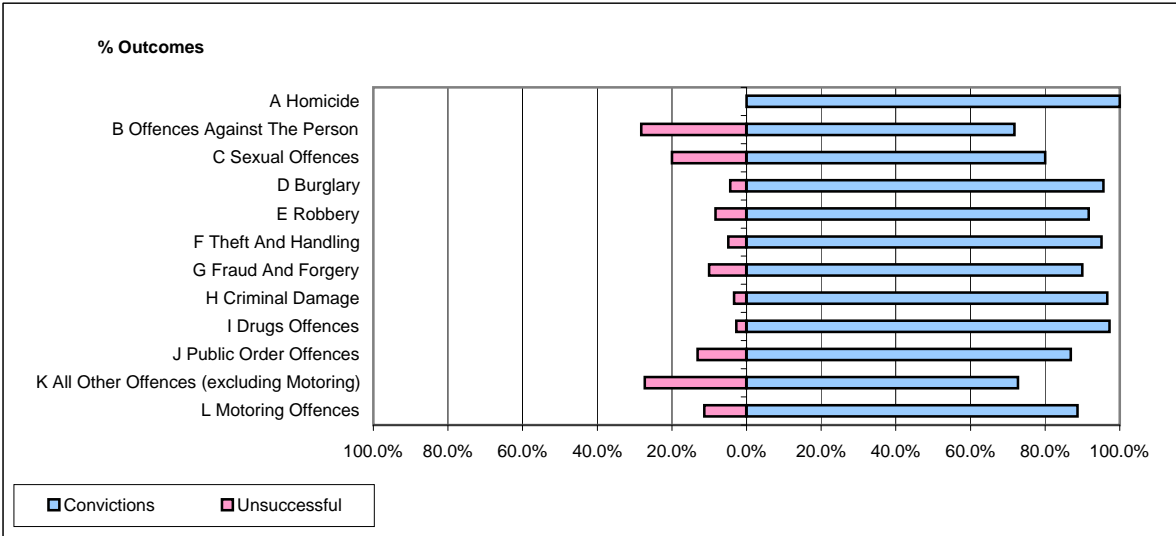


**CPS OUTCOMES BY PRINCIPAL OFFENCE CATEGORY**

January 2009

**P02-Bedfordshire**



	Convictions		Unsuccessful	
	Number of Defendants	%	Number of Defendants	%
<b>A Homicide</b>	<b>3</b>	<b>100.0%</b>	<b>0</b>	<b>0.0%</b>
<b>B Offences Against The Person</b>	<b>79</b>	<b>71.8%</b>	<b>31</b>	<b>28.2%</b>
<b>C Sexual Offences</b>	<b>4</b>	<b>80.0%</b>	<b>1</b>	<b>20.0%</b>
<b>D Burglary</b>	<b>22</b>	<b>95.7%</b>	<b>1</b>	<b>4.3%</b>
<b>E Robbery</b>	<b>11</b>	<b>91.7%</b>	<b>1</b>	<b>8.3%</b>
<b>F Theft And Handling</b>	<b>97</b>	<b>95.1%</b>	<b>5</b>	<b>4.9%</b>
<b>G Fraud And Forgery</b>	<b>9</b>	<b>90.0%</b>	<b>1</b>	<b>10.0%</b>
<b>H Criminal Damage</b>	<b>29</b>	<b>96.7%</b>	<b>1</b>	<b>3.3%</b>
<b>I Drugs Offences</b>	<b>36</b>	<b>97.3%</b>	<b>1</b>	<b>2.7%</b>
<b>J Public Order Offences</b>	<b>33</b>	<b>86.8%</b>	<b>5</b>	<b>13.2%</b>
<b>K All Other Offences (excluding Motoring)</b>	<b>24</b>	<b>72.7%</b>	<b>9</b>	<b>27.3%</b>
<b>L Motoring Offences</b>	<b>242</b>	<b>88.6%</b>	<b>31</b>	<b>11.4%</b>
<b>Admin Finalisations</b>	<b>0</b>	<b>0.0%</b>	<b>8</b>	<b>100.0%</b>
<b>TOTAL</b>	<b>589</b>	<b>86.1%</b>	<b>95</b>	<b>13.9%</b>