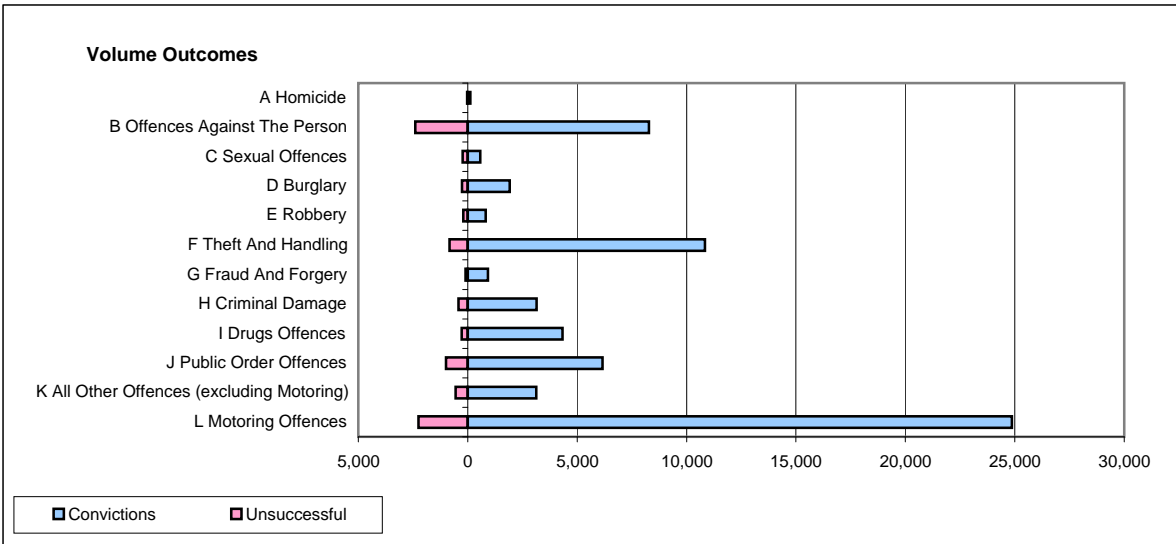
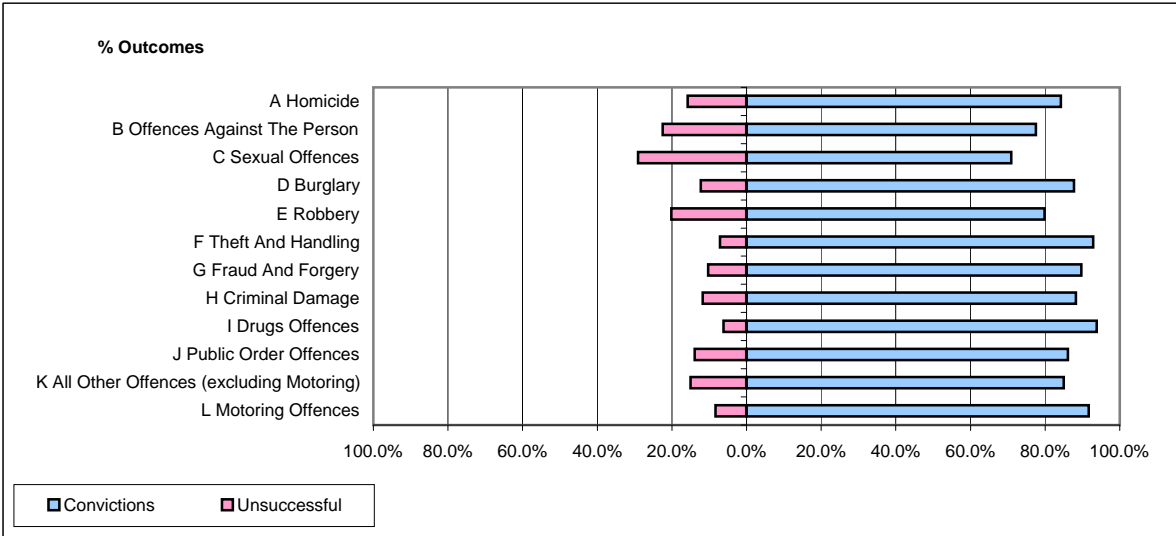


**CPS OUTCOMES BY PRINCIPAL OFFENCE CATEGORY**

**December 2008**

**42 Areas**



	Convictions		Unsuccessful	
	Number of Defendants	%	Number of Defendants	%
<b>A Homicide</b>	123	84.2%	23	15.8%
<b>B Offences Against The Person</b>	8,274	77.5%	2,401	22.5%
<b>C Sexual Offences</b>	574	71.0%	235	29.0%
<b>D Burglary</b>	1,913	87.8%	267	12.2%
<b>E Robbery</b>	828	79.8%	209	20.2%
<b>F Theft And Handling</b>	10,840	92.9%	828	7.1%
<b>G Fraud And Forgery</b>	920	89.7%	106	10.3%
<b>H Criminal Damage</b>	3,144	88.3%	418	11.7%
<b>I Drugs Offences</b>	4,329	93.9%	283	6.1%
<b>J Public Order Offences</b>	6,163	86.1%	997	13.9%
<b>K All Other Offences (excluding Motoring)</b>	3,125	85.0%	552	15.0%
<b>L Motoring Offences</b>	24,859	91.7%	2,246	8.3%
<b>Admin Finalisations</b>	0	0.0%	1,290	100.0%
<b>TOTAL</b>	<b>65,092</b>	<b>86.9%</b>	<b>9,855</b>	<b>13.1%</b>