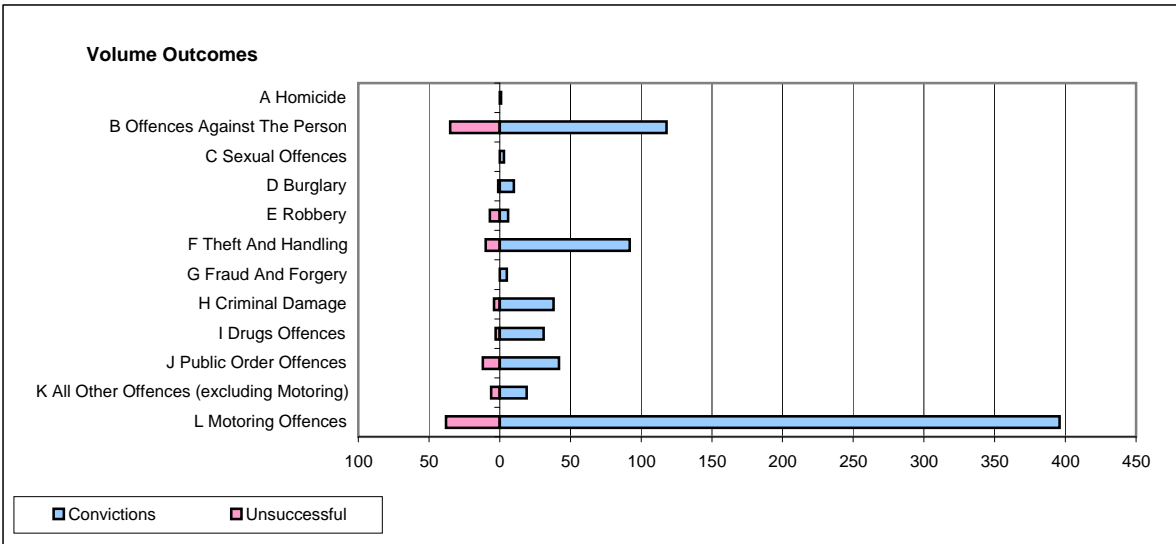
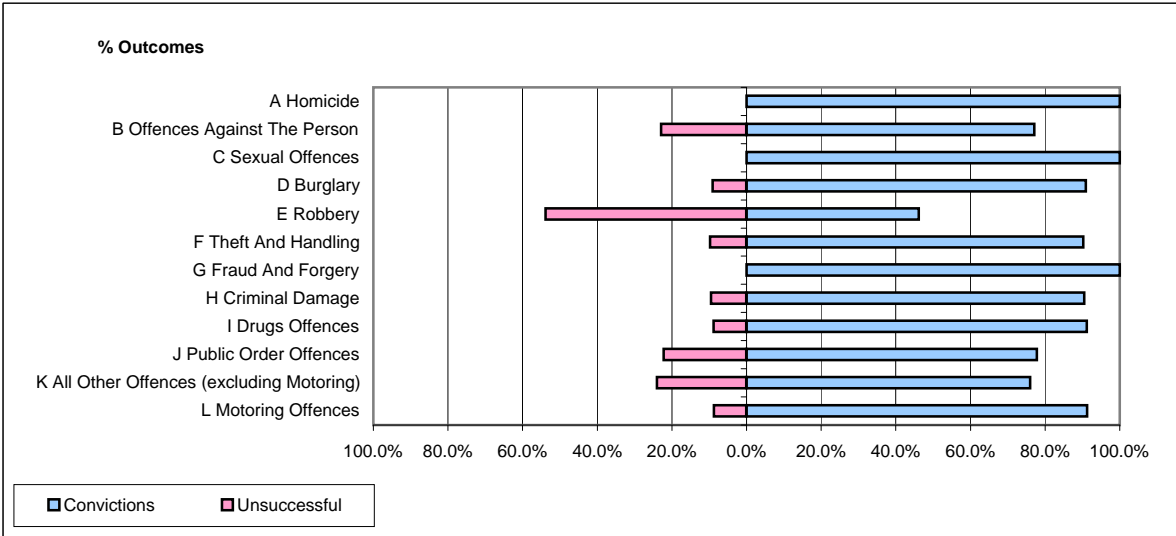


CPS OUTCOMES BY PRINCIPAL OFFENCE CATEGORY

December 2008

P43-Wiltshire



	Convictions		Unsuccessful	
	Number of Defendants	%	Number of Defendants	%
A Homicide	1	100.0%	0	0.0%
B Offences Against The Person	118	77.1%	35	22.9%
C Sexual Offences	3	100.0%	0	0.0%
D Burglary	10	90.9%	1	9.1%
E Robbery	6	46.2%	7	53.8%
F Theft And Handling	92	90.2%	10	9.8%
G Fraud And Forgery	5	100.0%	0	0.0%
H Criminal Damage	38	90.5%	4	9.5%
I Drugs Offences	31	91.2%	3	8.8%
J Public Order Offences	42	77.8%	12	22.2%
K All Other Offences (excluding Motoring)	19	76.0%	6	24.0%
L Motoring Offences	396	91.2%	38	8.8%
Admin Finalisations	0	0.0%	10	100.0%
TOTAL	761	85.8%	126	14.2%