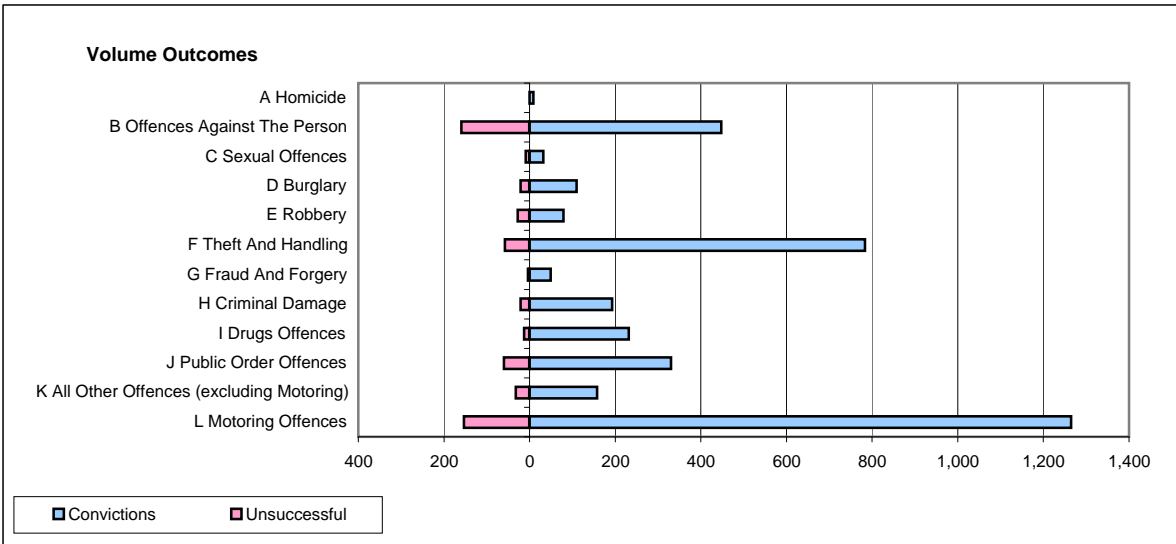
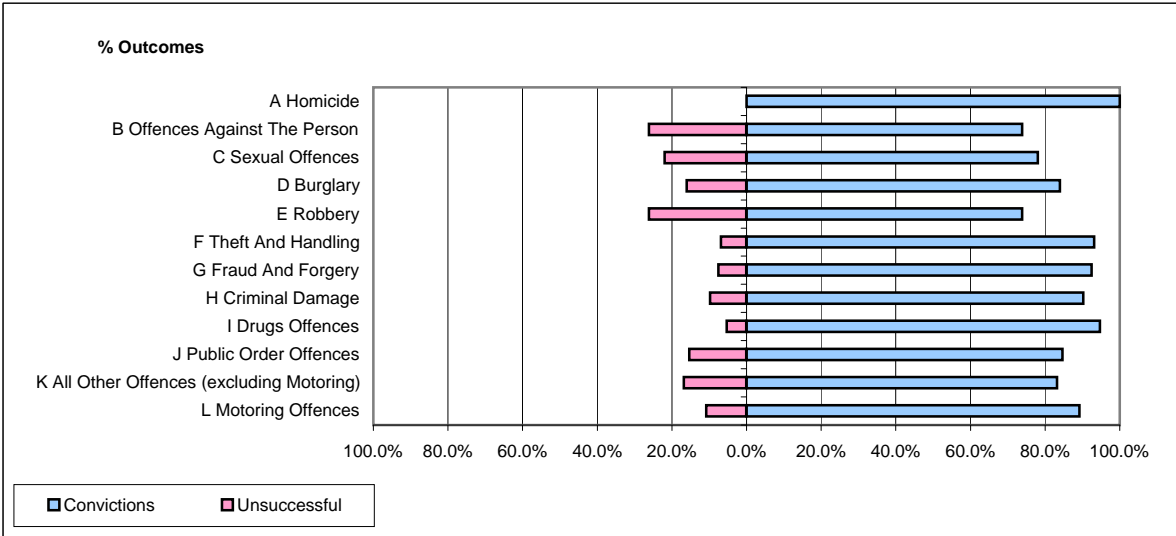


CPS OUTCOMES BY PRINCIPAL OFFENCE CATEGORY

December 2008

P41-WestMidlands



	Convictions		Unsuccessful	
	Number of Defendants	%	Number of Defendants	%
A Homicide	9	100.0%	0	0.0%
B Offences Against The Person	448	73.8%	159	26.2%
C Sexual Offences	32	78.0%	9	22.0%
D Burglary	110	84.0%	21	16.0%
E Robbery	79	73.8%	28	26.2%
F Theft And Handling	783	93.1%	58	6.9%
G Fraud And Forgery	49	92.5%	4	7.5%
H Criminal Damage	193	90.2%	21	9.8%
I Drugs Offences	232	94.7%	13	5.3%
J Public Order Offences	330	84.6%	60	15.4%
K All Other Offences (excluding Motoring)	158	83.2%	32	16.8%
L Motoring Offences	1,265	89.2%	153	10.8%
Admin Finalisations	0	0.0%	56	100.0%
TOTAL	3,688	85.7%	614	14.3%