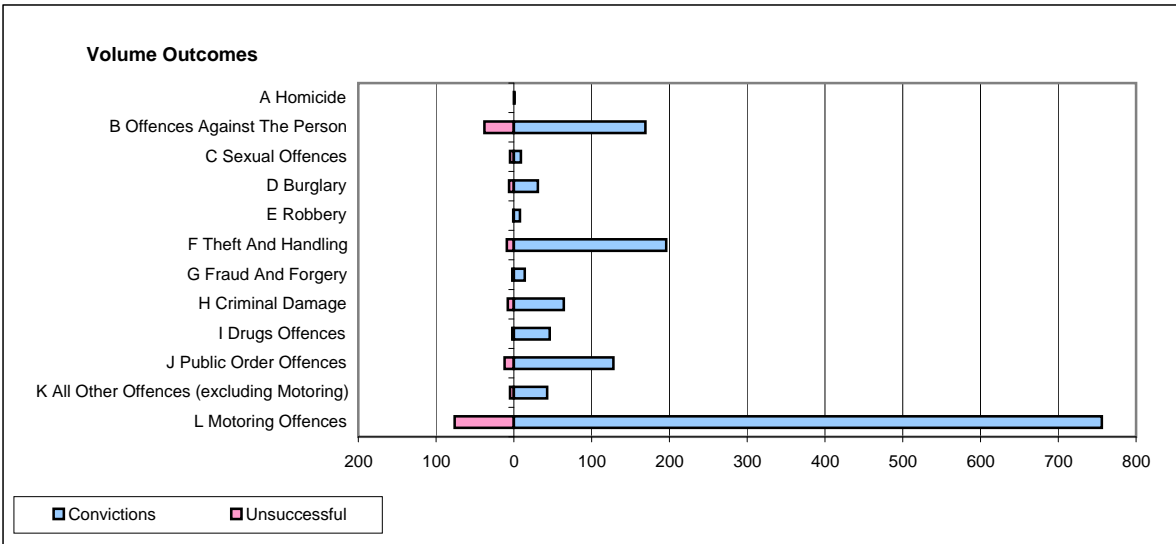
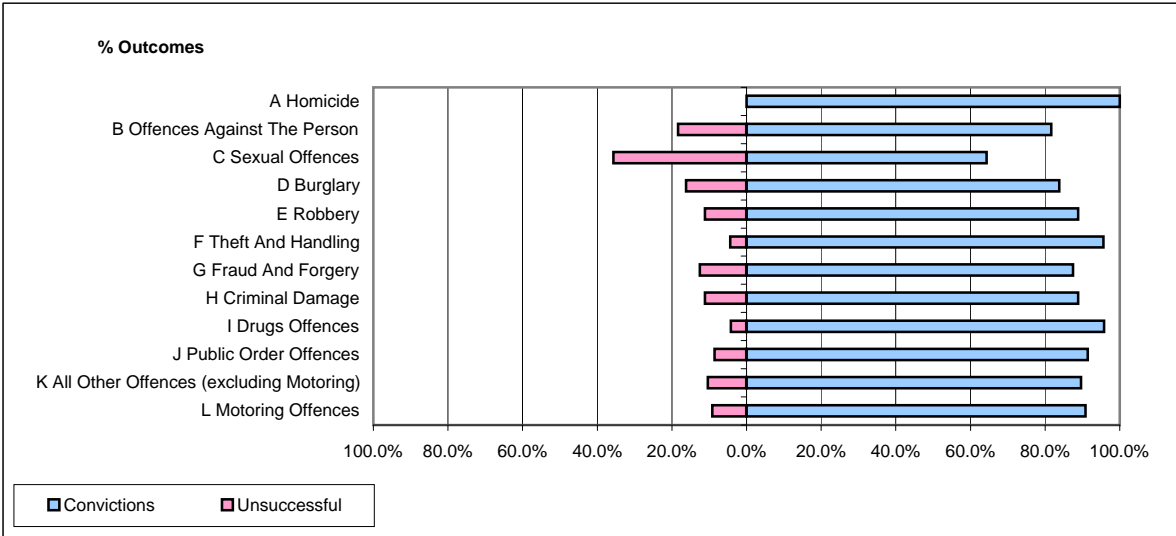


CPS OUTCOMES BY PRINCIPAL OFFENCE CATEGORY

December 2008

P40-WestMercia



	Convictions		Unsuccessful	
	Number of Defendants	%	Number of Defendants	%
A Homicide	1	100.0%	0	0.0%
B Offences Against The Person	169	81.6%	38	18.4%
C Sexual Offences	9	64.3%	5	35.7%
D Burglary	31	83.8%	6	16.2%
E Robbery	8	88.9%	1	11.1%
F Theft And Handling	196	95.6%	9	4.4%
G Fraud And Forgery	14	87.5%	2	12.5%
H Criminal Damage	64	88.9%	8	11.1%
I Drugs Offences	46	95.8%	2	4.2%
J Public Order Offences	128	91.4%	12	8.6%
K All Other Offences (excluding Motoring)	43	89.6%	5	10.4%
L Motoring Offences	756	90.9%	76	9.1%
Admin Finalisations	0	0.0%	18	100.0%
TOTAL	1,465	88.9%	182	11.1%