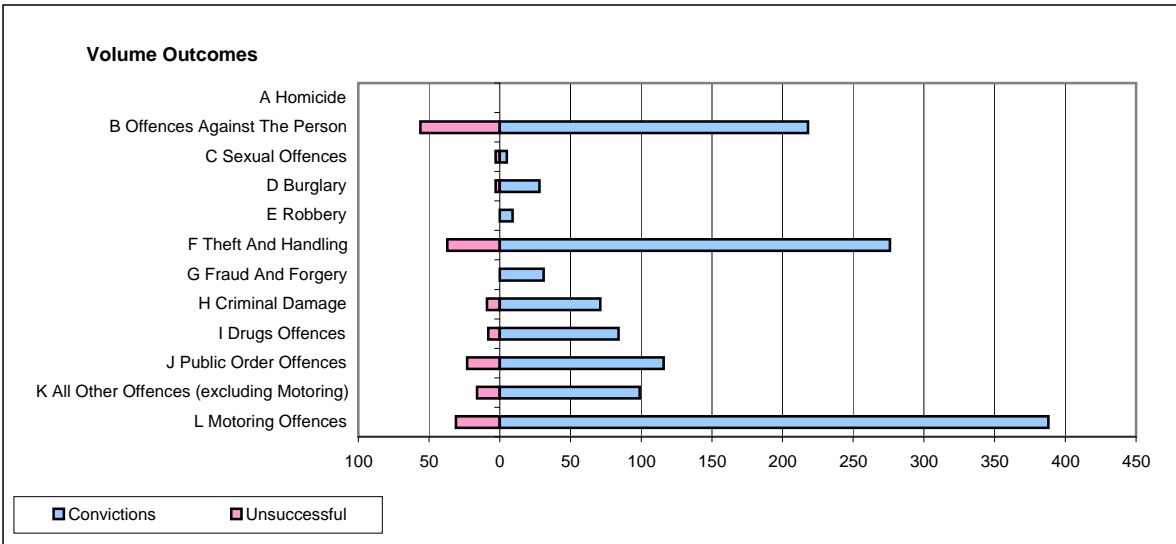
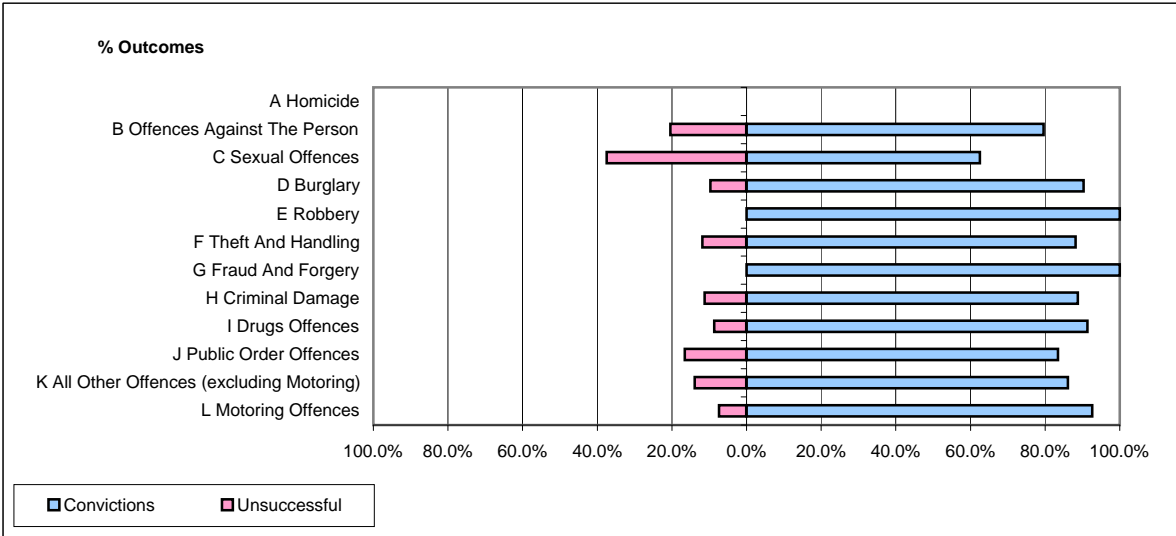


CPS OUTCOMES BY PRINCIPAL OFFENCE CATEGORY

December 2008

P37-Sussex



| | Convictions | | Unsuccessful | |
|--|----------------------|---------------|----------------------|---------------|
| | Number of Defendants | % | Number of Defendants | % |
| A Homicide | 0 | 0 | 0 | 0 |
| B Offences Against The Person | 218 | 79.6% | 56 | 20.4% |
| C Sexual Offences | 5 | 62.5% | 3 | 37.5% |
| D Burglary | 28 | 90.3% | 3 | 9.7% |
| E Robbery | 9 | 100.0% | 0 | 0.0% |
| F Theft And Handling | 276 | 88.2% | 37 | 11.8% |
| G Fraud And Forgery | 31 | 100.0% | 0 | 0.0% |
| H Criminal Damage | 71 | 88.8% | 9 | 11.3% |
| I Drugs Offences | 84 | 91.3% | 8 | 8.7% |
| J Public Order Offences | 116 | 83.5% | 23 | 16.5% |
| K All Other Offences (excluding Motoring) | 99 | 86.1% | 16 | 13.9% |
| L Motoring Offences | 388 | 92.6% | 31 | 7.4% |
| Admin Finalisations | 0 | 0.0% | 38 | 100.0% |
| TOTAL | 1,325 | 85.5% | 224 | 14.5% |