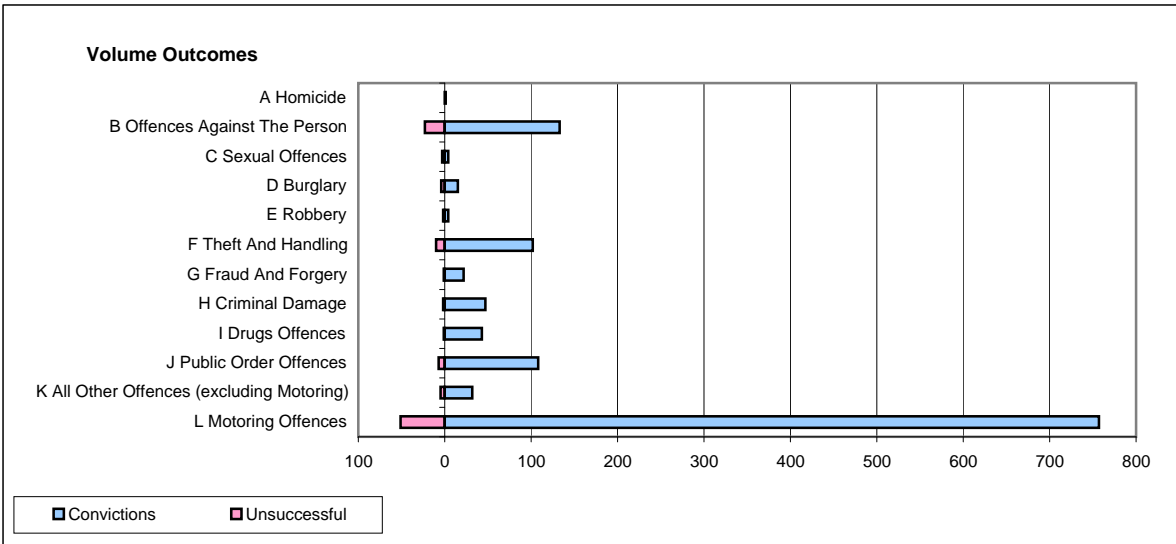
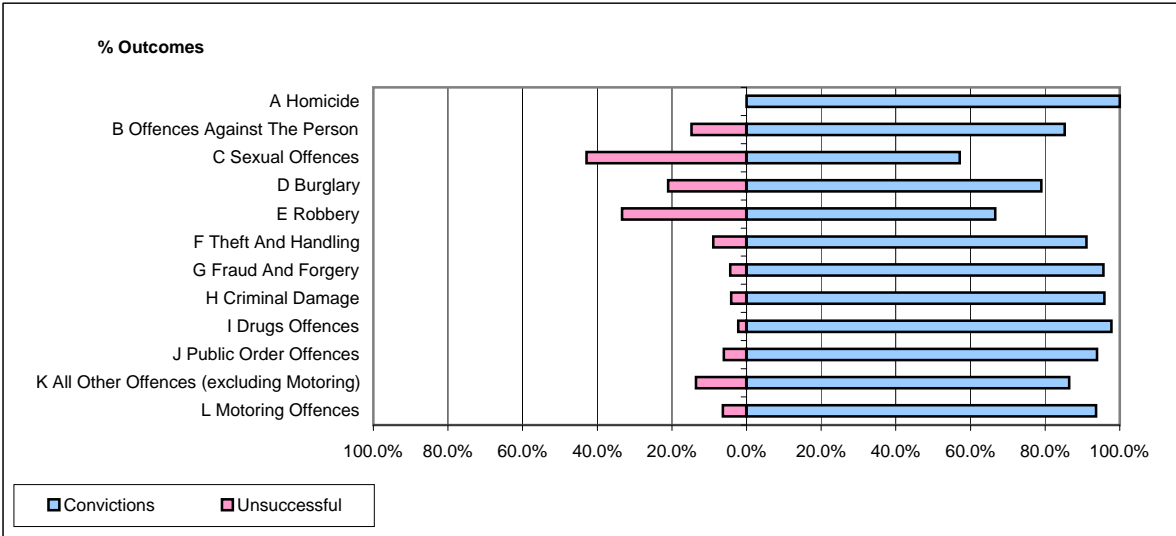


CPS OUTCOMES BY PRINCIPAL OFFENCE CATEGORY

December 2008

P35-Suffolk



	Convictions		Unsuccessful	
	Number of Defendants	%	Number of Defendants	%
A Homicide	1	100.0%	0	0.0%
B Offences Against The Person	133	85.3%	23	14.7%
C Sexual Offences	4	57.1%	3	42.9%
D Burglary	15	78.9%	4	21.1%
E Robbery	4	66.7%	2	33.3%
F Theft And Handling	102	91.1%	10	8.9%
G Fraud And Forgery	22	95.7%	1	4.3%
H Criminal Damage	47	95.9%	2	4.1%
I Drugs Offences	43	97.7%	1	2.3%
J Public Order Offences	108	93.9%	7	6.1%
K All Other Offences (excluding Motoring)	32	86.5%	5	13.5%
L Motoring Offences	757	93.7%	51	6.3%
Admin Finalisations	0	0.0%	11	100.0%
TOTAL	1,268	91.4%	120	8.6%